

Innovating the raw materials value chain

Didier Zimmermann, General Manager
EIT RawMaterials Central CLC, Metz

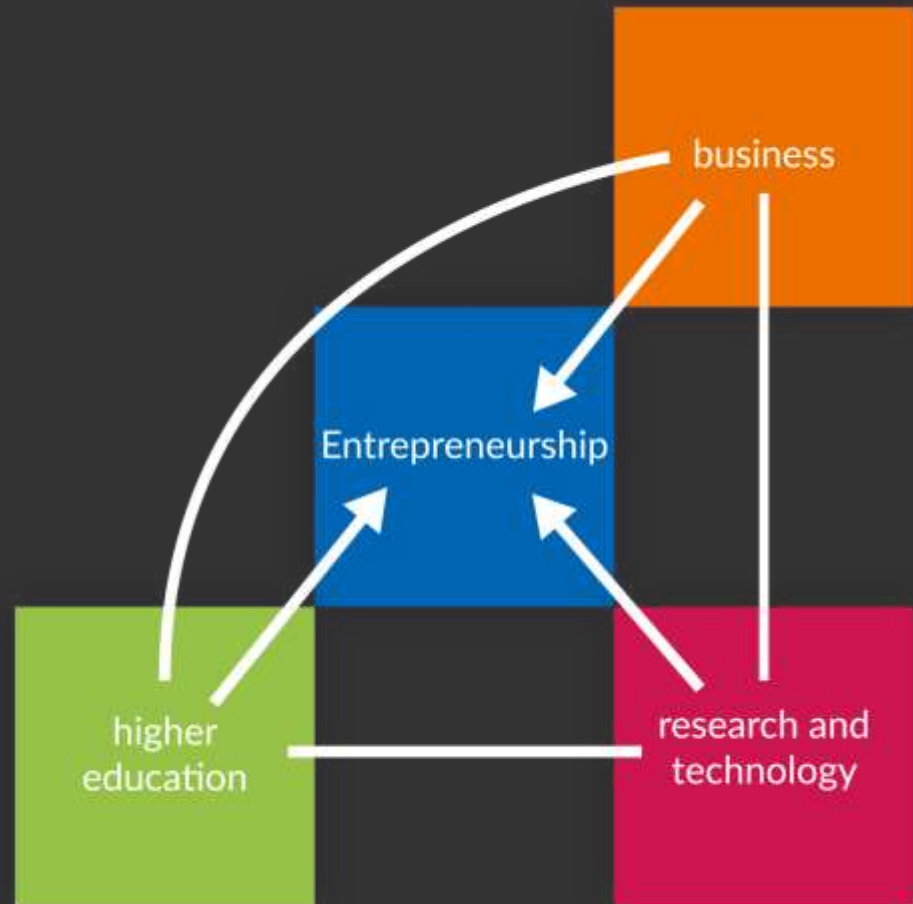


EIT RawMaterials is supported by the EIT,
a body of the European Union



What is the EIT?

- EIT = European Institute for Innovation and Technology
- Building on the Innovation Triangle





EIT Community

- Knowledge and Innovation Communities : KICs

- First wave

- Energy
- Digital
- Climate

- Second wave

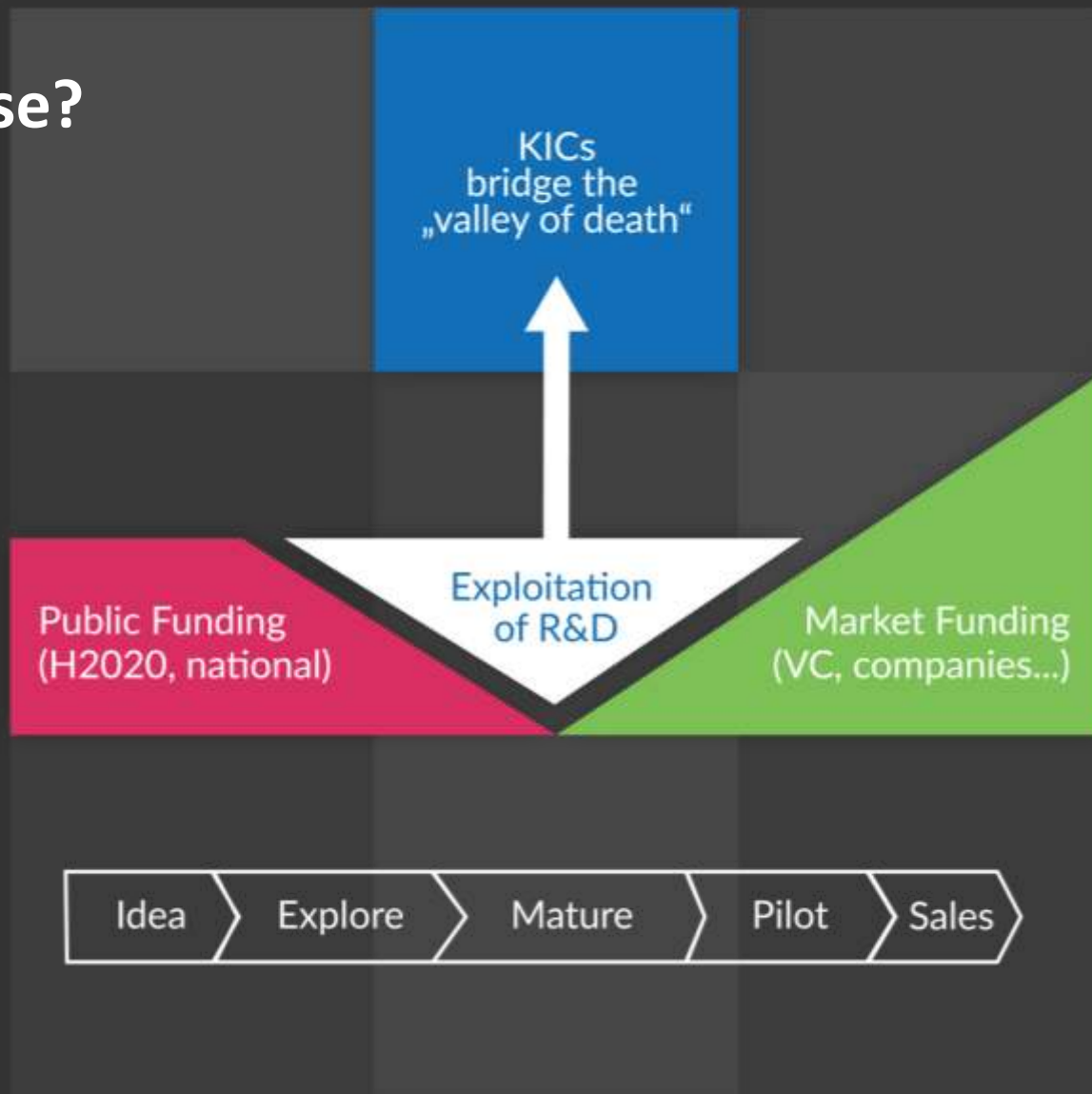
- Health
- Raw Materials





What is the purpose?

- Bridging the valley of death
- Market introduction of products and processes
- Educate entrepreneurs

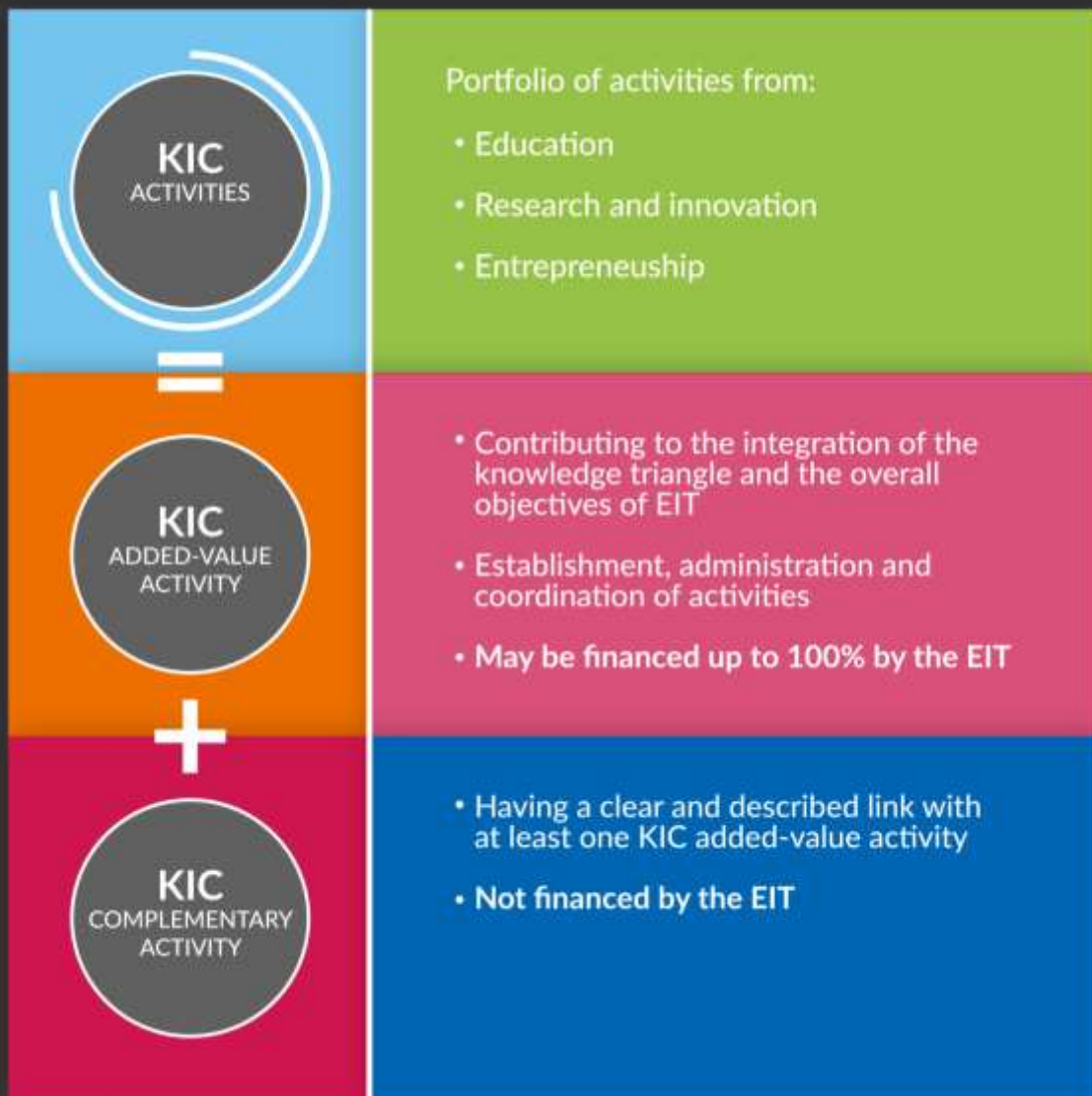


RawMaterials



Funding Model

- No research funding



RawMaterials

Challenges are opportunities

Rapidly increasing
and diverse demand

Decreasing quality
of resources



Vulnerable ecosystems



Unused material
flows and stocks



Siloing across the
value chain





EIT Raw Materials



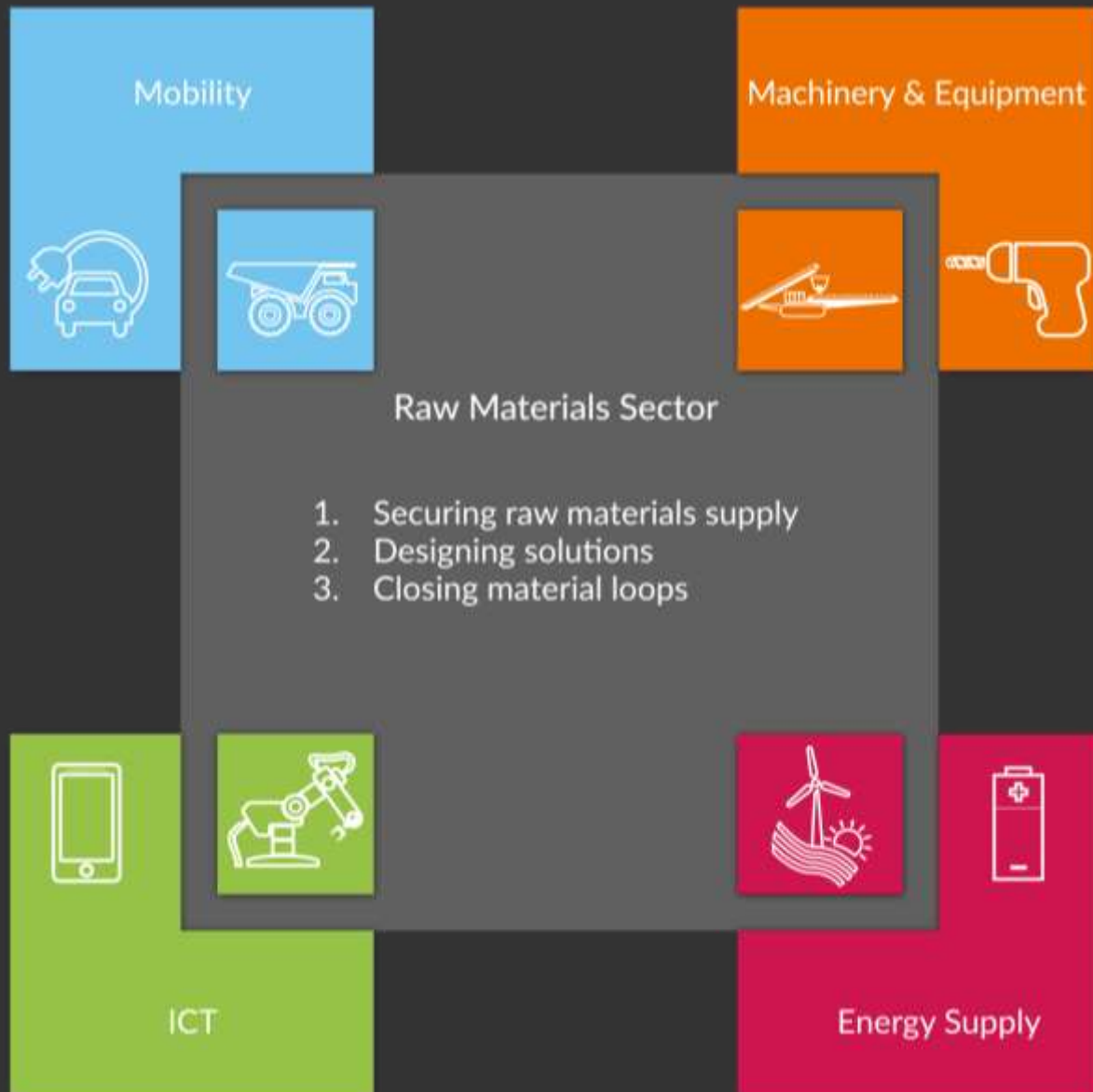
Goals

1. Creating and developing new “game changing” businesses
2. Boosting the existing RM sector through the market introduction of new materials, investment in new production and processing units, system integration and the setting up of new partnerships
3. Achieving a “paradigm shift” in RM education by introducing entrepreneurship, supporting the effective transformation of ideas into businesses



Focus Markets

- Material intensive
- Providing solutions for the raw materials sector

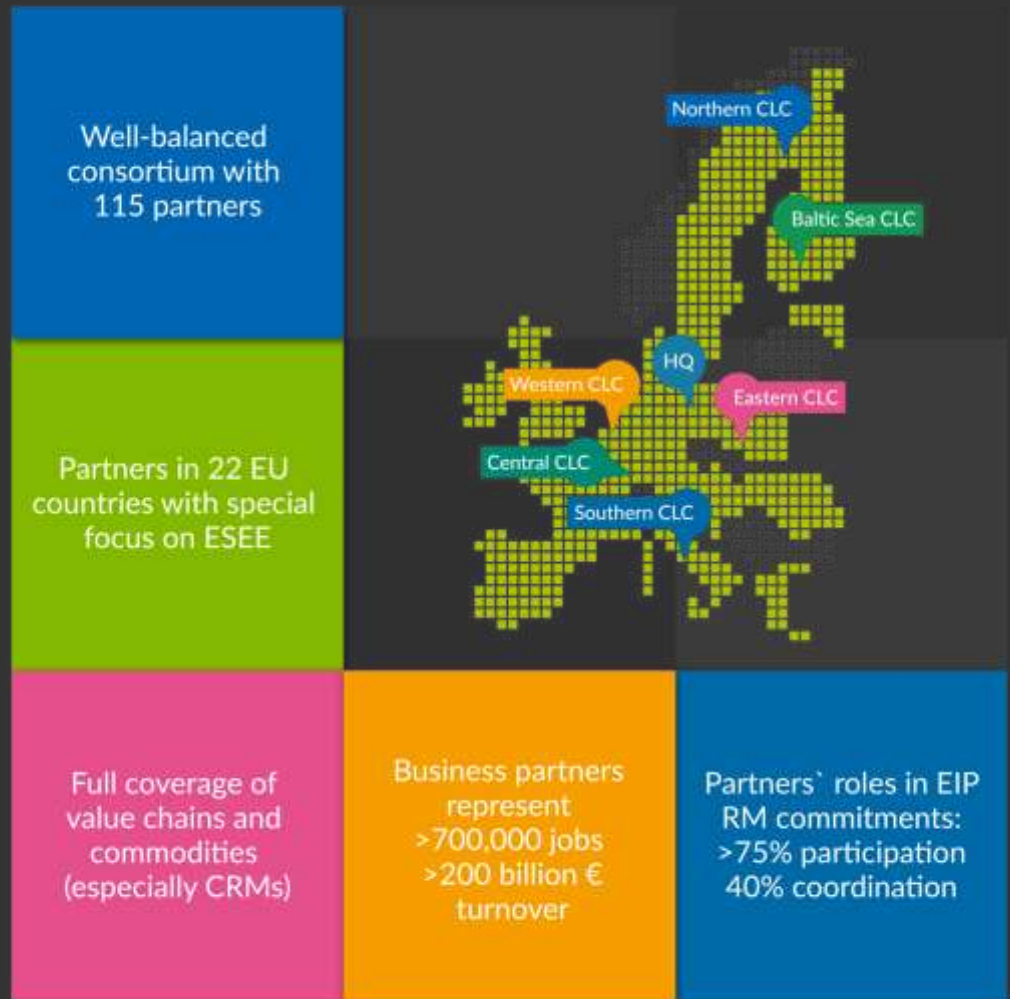


RawMaterials

A pan-European Network of Excellence

- Partner types:

- Core
- Associate
- Task
- Support





Knowledge and Innovation Themes

- *De-siloing*
- *Value Chain thinking*
- Exploration and raw materials resource assessment
- Mining in challenging environments
- Increased resource efficiency in mineral and metallurgical processes
- Recycling and materials chain optimisation for End-of-Life products
- Substitution of critical and toxic materials in products and for optimised performance
- Design of products and services for the circular economy



Activities

Matchmaking & Networking

1. InfoCentre
2. Matches
3. Idea Camp
4. Intrapreneurship
Facilitator

Education & Learning

7. PhD Education
8. Master Education
9. Lifelong Education
10. Wider Society
Learning

Validation & Acceleration

5. Upscaling projects
6. Network of
Infrastructure

Business Creation & Support

11. Entrepreneurship
Support services
12. Start-Up Booster
13. SME Growth booster
14. Kick-start Funding
15. Funding instruments



EIT RM

Central CLC

Location

*ENIM, school of Engineers,
Metz – Technopole*



**a hub of Innovation in
the field of materials :**

- IRTM2P
- C2IME
- CEA Tech
- Matériaux
- Metafensh
- Lafayette Institute
- LEM 3

Playground :

- France
- South & West of Germany



EIT RM

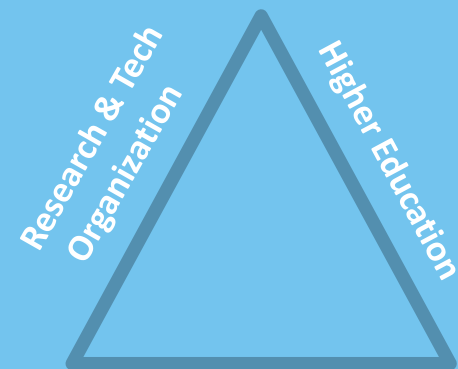
Central CLC

Partners

Industrial :

Core :
Arkema
Eramet,
Heraeus

Associate :
Arcelor Mittal,
Suez Environnement



Industrial

RTO :

Core :
CEA
Fraunhofer

Associate :
BRGM

Higher Education :

Core :
Univ. de Bordeaux
Univ. de Lorraine

Associate :
TU Darmstadt
INP Grenoble



EIT RM

Central CLC

Mapping of interest

Survey among partners
(Core & Associate)

on priorities regarding :

- Themes of Innovations &
- Markets of interest



3 majors themes of Innovation

T5- Substitution of RM

T3 - Efficient processing of
Resources

T4- Recycling of RM

With Circular Economy T6

Focus on 2 markets :

- Mobility

- Energy



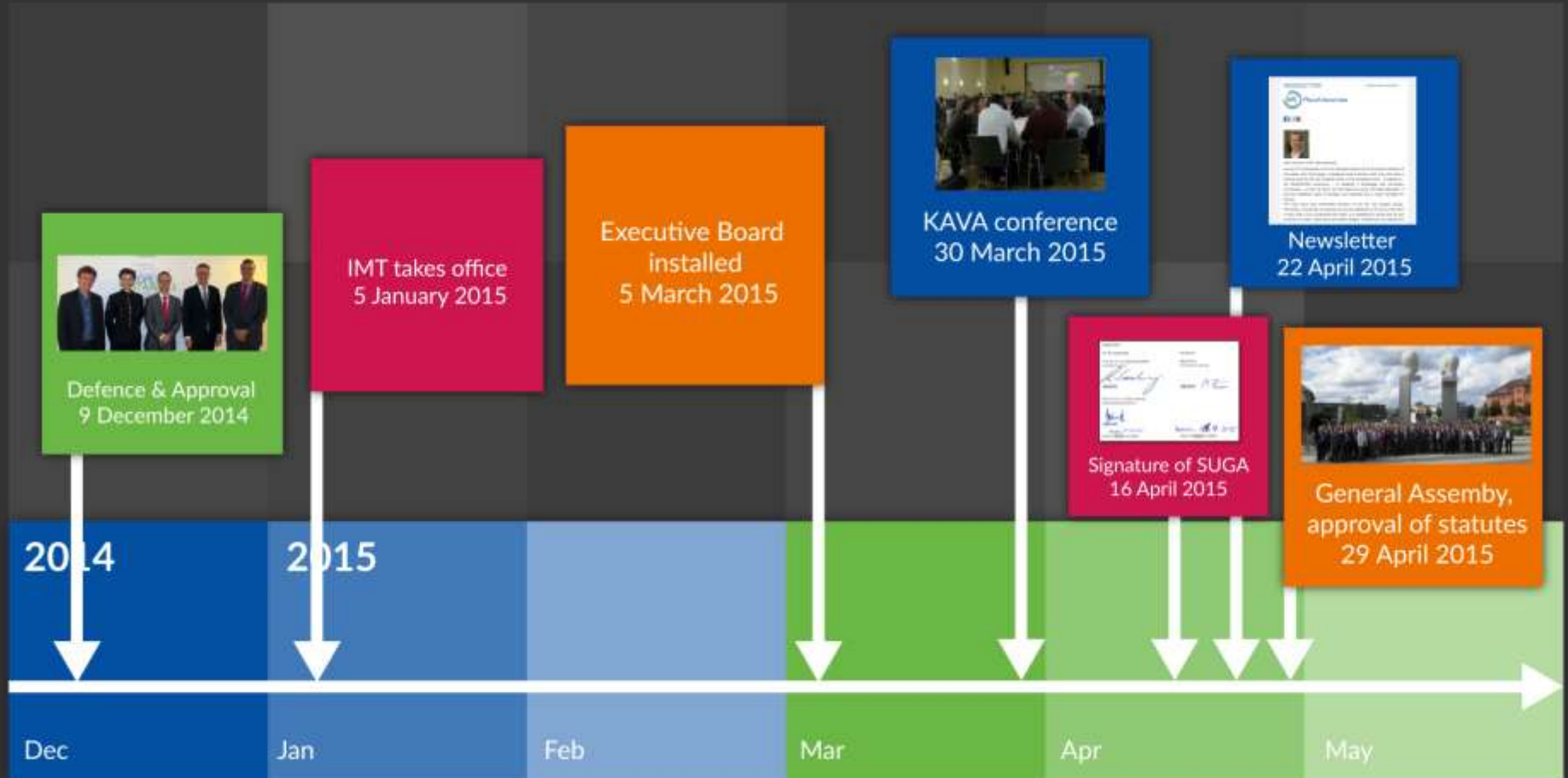
Impact

- Goals for 2022

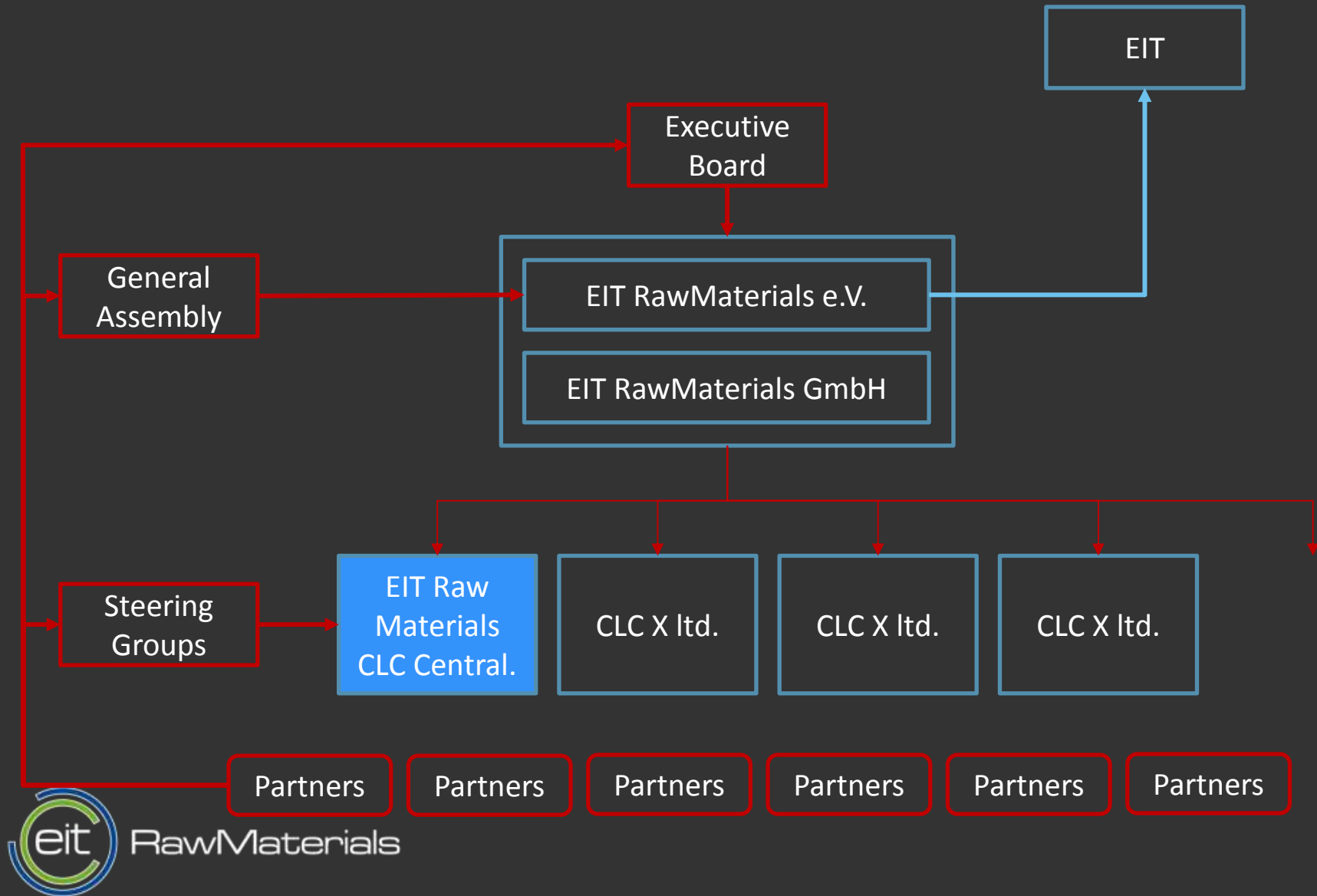


RawMaterials

Q1 & Q2 –start-up year with implementation of the EIT RM



Organization & Management of the EIT RawMaterials



Launching of calls in 2015

Network of
Infrastructures

Education
(1st)

Matchmaking
& Networking

Education
(2nd)

Up Scaling
UPS

Launching

April

May

May

July

July

Deadline of submission

June

June

June

October

October

Release of the decision

July

July

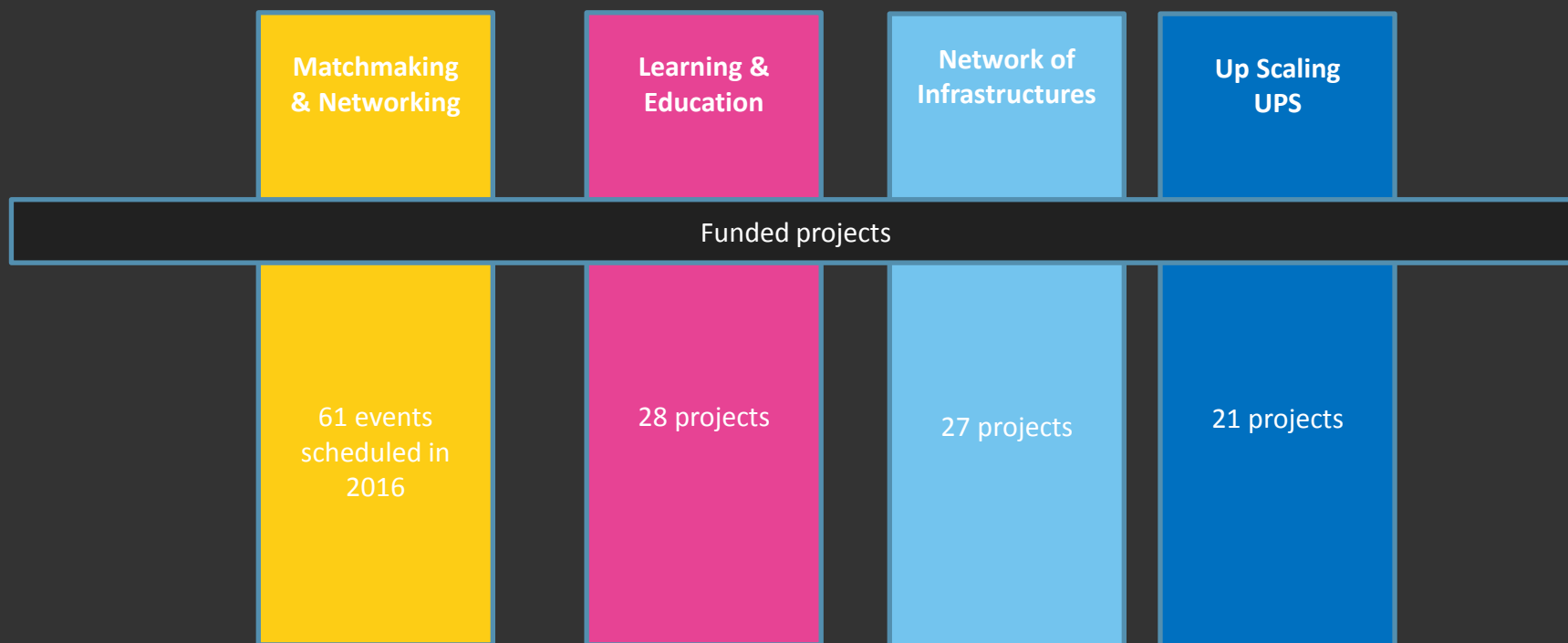
September (list)

December

December



Results – number of projects funded in 2016-2017





As an illustration : results on UPS

Central CLC as :



leader



partner

Predict
(task partner
Central CLC)

* The 6 EIT
RawMaterials
themes of innovation

T1- exploring

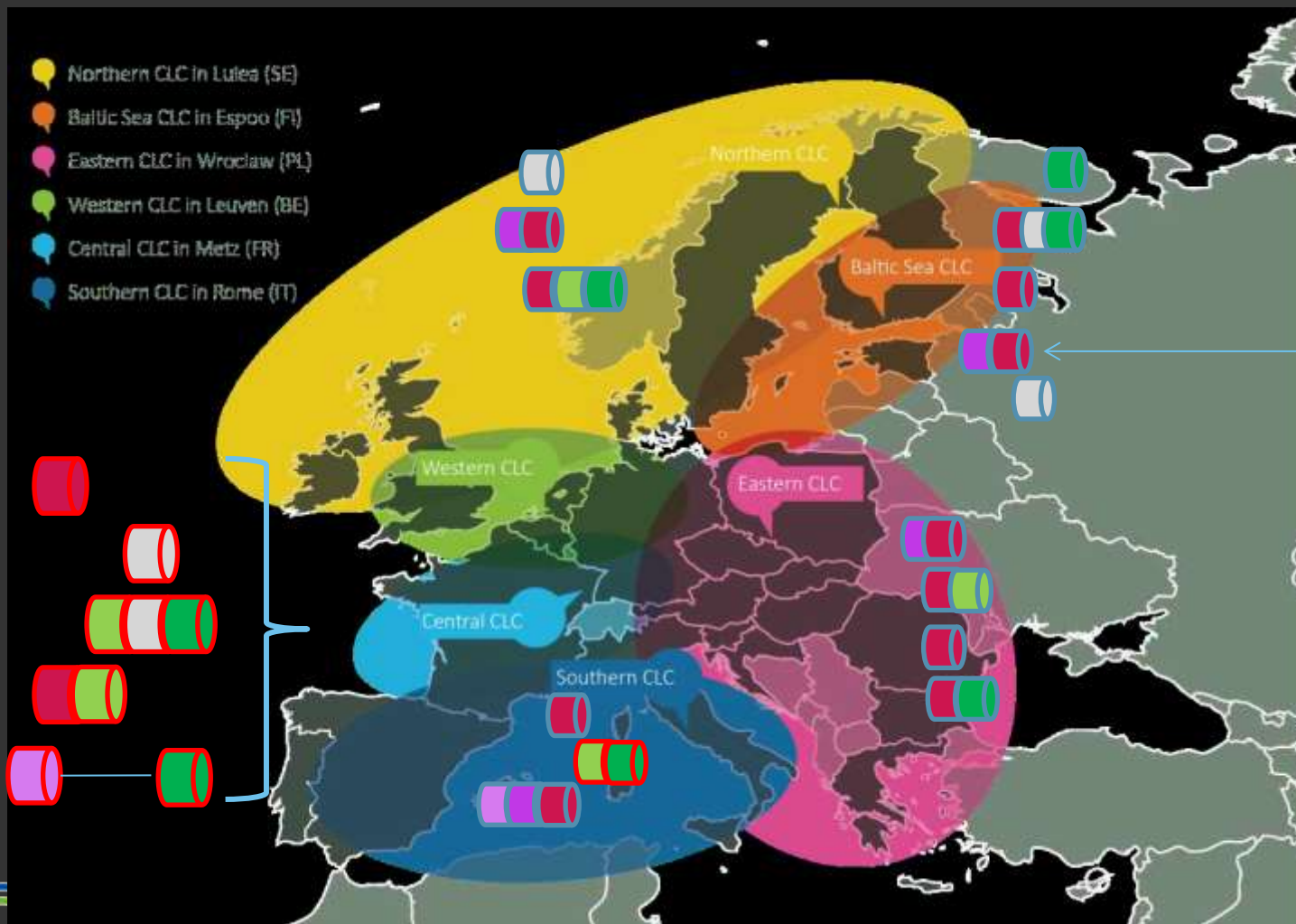
T2- mining

T3- processing

T4- recycling

T5 - substitution

T6- Eco-design



OUR VISION

To develop raw materials into a
major strength for Europe



Thank you for your attention