

Energy efficiency practitioners

Expertise

Looking for partners

Project

EE13 - Next-generation of smart energy services

EE2 - Integrated home renovation services

EE8 - Implementation of energy audits

Topics

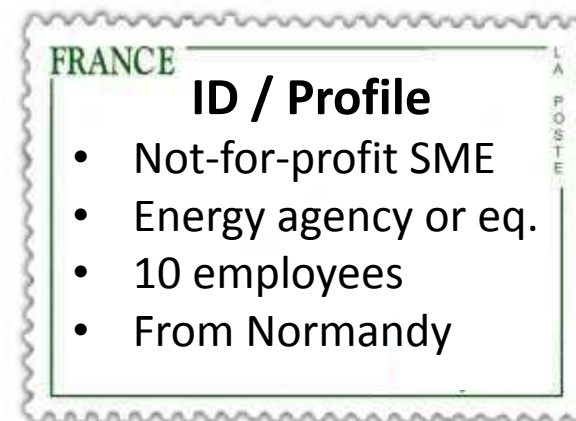


Les 7 Vents

Who we are

” Utility cooperative of sustainable energy and development

- Skills and expertise
 - Since 1998, +50 000 contacts directly impacted by our **free energy advices and information** to individuals [#PublicService](#)
 - +200 companies and public bodies supported towards **energy transition and sustainable living modes** [#Consultancy](#)
- EU-funded projects / pilot projects
 - 7 successful, 2 running (leading 1)
 - Local energy agency, demonstrative photovoltaics & fuel cells, anaerobic digestion, NZEB, positive energy buildings, ecobuilding... [#InnovationLab](#)



Enhance our efficiency... ...in energy efficiency!

Our project idea / expertise

Description of our project ideas (content and why you expect it to be successful)	Description of what we...	
	...could bring (offer to other proposals)	...would take (request from partners)
1. To capitalize on new models of services #EE13	Context to implement 2 new services (already identified at partners')	Experience of successful services wishing to upscale + good will
2. To support moves into action of renovators #EE2	Feedbacks on 2 types of renovation services (already run by us)	Feedbacks on other kinds of renovation services + policy scientists
3. To empower SMEs for energy audits #EE8	Transnational experience about energy audits in SMEs	Connectivity to networks of SMEs + pedagogical engineering



No consortium (yet!)

Known partners / Competence offer

We could recommend some of the partners we trust through our past or current partnerships

We are looking for serious fun. Expected high level work and happiness 😊

Partner search

Profile	Type	Country	Role in the project
EE13 - Energy service providers	Any	Any	To deploy an integrated model
EE2 - Org. close to homeowners	Any	Any	To support efficient renovations
EE8 - SMEs' capacity builders	Any	Any	To go beyond energy audits



Contact details



Florian GUILLOTTE

Chargé de projets
Europe et Innovation

*Project Manager
Europe and Innovation*



02.33.19.01.37

florian.guillotte@7vents.eu

25 rue du D^rH.Guillard 50200 COUTANCES

conseil • études • ingénierie
consulting • research • engineering



Développer - Develop

Energies renouvelables / Renewable energies

Eco-construction / Eco-buildings

Accompagner - Accompany

Territoires & innovations / Fields and innovations

Développement durable / Sustainable development

Innover - Innovate

Projets de coopération / Cooperation projects

Intelligence collective / Collective intelligence

www.7vents.fr



OPQIBi
L'INGÉNIERIE QUALIFIÉE

BIM-based platform to digitalise the life cycle of the building sector

LC-EEB-06-2018-20: ICT enabled, sustainable and affordable
residential building construction, design to end of life

Thematic Buildings -EE & EEB
brokerage workshops

EU Brokerage Event on Energy Efficiency in Horizon 2020
Paris, 21st June 2018

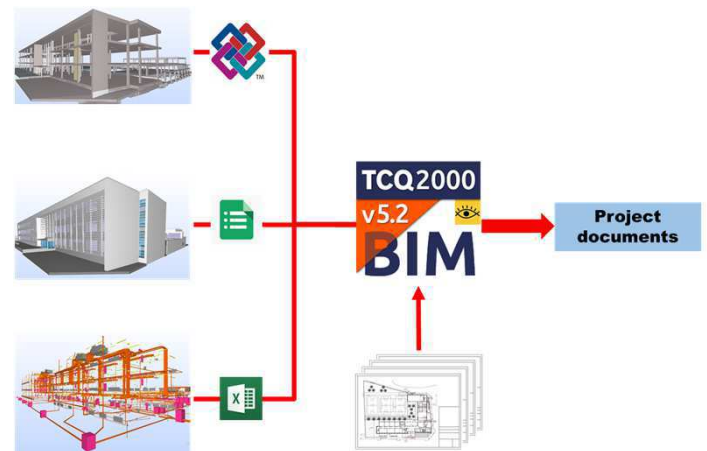
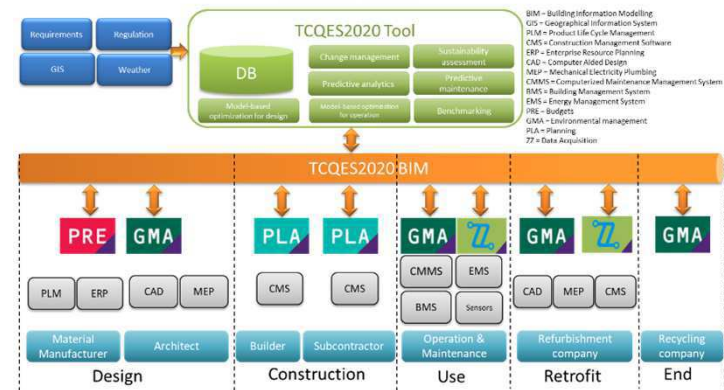
The Catalan Institute of Construction Technology -ITeC

- Non-profit private foundation born in 1978 to support innovation in construction:
 - The generation and transfer of knowledge and technology;
 - The provision of technological services;
 - To be a benchmark institution.
- Skills and Expertise:
 - Technological, environmental and management assessment;
 - Certification of innovative products;
 - Development of technology (Product databases, BIM product catalogues, BIM standards, software, etc.);
 - Market research;
 - Fundraising processes;
 - Training and network.
- Experience of EU funded projects if any:
 - Evaluation, minimization and selection of waste (LIFE - 2000);
 - Reducing Construction Environmental Impact (LIFE – 2003);
 - Smart material for insulation (H2020 - 2014);
 - Demonstration of new integrated services new buildings and renovation (H2020 - 2017).



Our project idea

- The project concentrates on the digitalisation of the processes carried out during the entire life cycle of a building. We will focus on the key aspects of this digitalisation.
 - Digital data: electronic sensor technologies and digital data collection that allow big data analytics to gain insights into every link in the value chain;
 - Automation: based on real-time measurement, optimal design, optimal operation (model predictive control and energy efficiency) and maintenance (fault detection and diagnosis) shall be automated;
 - Connectivity: connection and synchronization of the activities related to life cycle;
 - Digital access: remote access to the information.
- To ensure the interoperability, we propose to use BIM as the main link along the whole value chain. The project will start from existing BIM-based solutions (mid/high TRL) which will be extended to integrate them with other tools/technologies used in the value chain. Consequently, the one of main results will be a BIM-based platform that will contribute to the digitalisation of the life cycle and may be used by any stakeholder of the building sector.



Consortium

<u>Partner search</u>			
Profile	Type	Country	Role in the project
Material manufacturers	Association	North / South Europe	They will generate a BIM containing the construction elements to be used in the developed platform. It will allow buyers to place standardised and digitalised purchase orders. In addition, information obtained this BIM will allow to assess their products along the whole life cycle
Designers and engineers	SME	North / South Europe	They will use the platform to investigate the energy performance of their designs based on simulation. One of the key features of the proposed BIM is the possibility of including LCA information which can be used by architects to estimate the environmental impact of their designs
Construction companies	SME	North / South Europe	They will have available 4D BIM, which incorporates time as an additional planning dimension. Construction companies will be able to share this information with their subcontractors, avoiding any delay or fault due to information misunderstanding.
Building managers	Public companies	North / South Europe	They will use the platform as a decision support tool. Based on simulation and real-time data collected from the building, the platform will offer managers information about existing and potential faults in order to perform predictive maintenance.

Contact details

Contact person	
Organisation	The Catalonia Institute of Construction Technology - ITeC
Adress	Wellington 19, 08018 Barcelona (Spain)
Phone number	+34 933 09 34 04
E-mail	dsabates@itec.cat

DOWEL MANAGEMENT



Expertise in H2020 projects, coordination of application phase, dissemination, exploitation, techno-economic studies

Buildings (EE & EEB)

EU Brokerage Event on Energy Efficiency in Horizon 2020

Paris, 21st June 2018

DOWEL MANAGEMENT (formerly TECHNOFI)

- **Located in France, SME created in 1985**
- **Innovation management consulting with strong focus on sustainable development issues:** energy system transition, sustainable buildings, smart cities, resource efficiency, corporate societal responsibility...
- **Strong experience as partner in EU-funded projects:**
 - **STUNNING** (CSA, coordinator) <https://www.stunning-project.eu>
 - **SINFONIA** (IA) <http://www.sinfonia-smartcities.eu>
 - **BRESAER** (RIA) <http://www.bresaer.eu/>
 - **MEMAN** (RIA) <http://meman.eu/>
 - And many others - mainly in the energy sector...
- **Coordination of H2020 applications** for major stakeholders of the energy sector: **RTE, ENEDIS, ENEL, ...**

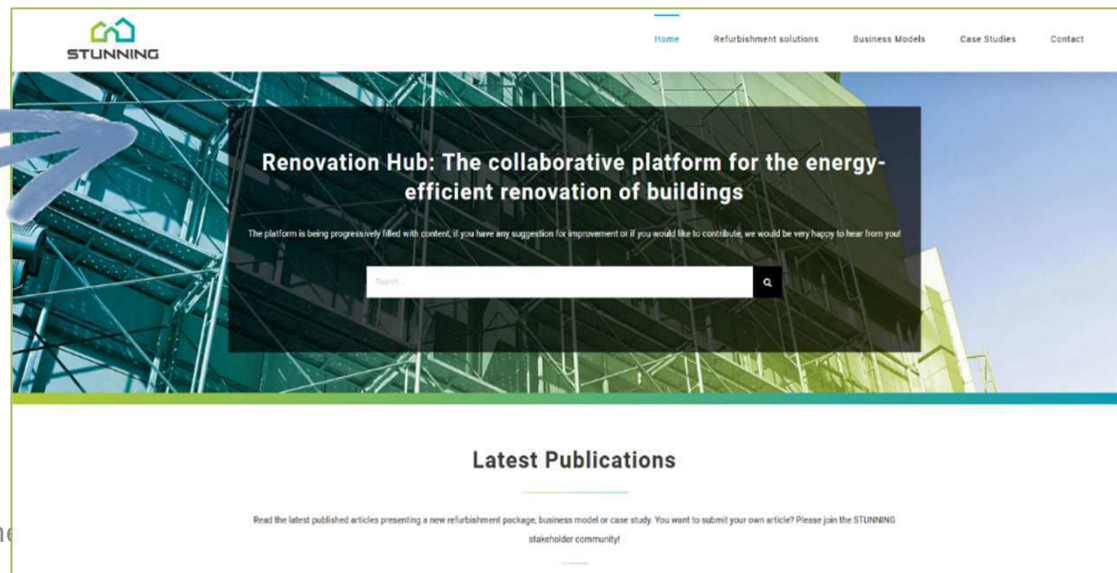


STUNNING

- **Coordination and Support Action:**
 - “SusTainable bUsiNess models for the deep reNOvation of bulldiNGs”
 - Started on 02/10/17 - 2 years
- **Objective:**
 - To accelerate the adoption of new business models for energy-efficient buildings based on integrated, adaptable and affordable refurbishment packages, and engage with the whole community of stakeholders



*Knowledge
Sharing Platform*



**Join the
community !**
stunning-project.eu

We propose :

- **Services to project coordinators** to support the application phase for Innovation Actions (**EE-1, EE-4, EE-5, EEB-01, EEB-03, EEB-05, EEB-06**), including:
 - Writing of sections 1, 2 and 3 of the proposal
 - Budget preparation
 - Administrative support
 - Subcontracting for specific tasks
- **Partnering with consortiums** preparing a CSA proposal (**EE-2, EE-3, EE-5**), including:
 - Support to project coordination
 - Dissemination and exploitation leader
 - Business model & business plan preparation
 - Working group facilitation
 - Set up and monitoring of KPIs
 - ...

Contact details

Contact person	Sophie Dourlens-Quaranta
Organisation	DOWEL MANAGEMENT
Address	25 allée Pierre Ziller – NAXOS – 06901 Sophia Antipolis - France
Phone number	00 33 6 88 25 15 02
E-mail	sophie.dourlens@dowel.eu

EU Brokerage Event on Energy Efficiency in Horizon 2020
Paris, 21st June 2018
Buildings (EE & EEB) session

ICEDD Skills and Services

- LC-SC3-EE-2 - Integrated home renovation services
- LC-SC3-EE-5 - Next-generation of Energy Performance Assessment and Certification
- LC-EEB-01 - Integration of energy smart materials in non-residential buildings
- LC-SC3-EE-6 - Business case for industrial waste heat/cold recovery
- LC-SC3-EE-11 - Aggregation - Project Development Assistance
- LC-SC3-EE-16 - Supporting public authorities to implement the Energy Union

Manu Harchies
Project Manager



ICEDD
INSTITUT DE CONSEIL ET D'ÉTUDES
EN DÉVELOPPEMENT DURABLE



Approach

Independent research and advise centre, accompanying public authorities and private sector in the transition to a sustainable world

EU Expertise

Eurostat
DG Environment
EU LIFE Programme

Fields



Natural Ressources &
Waste



Mobility
& Land-use
planning



Climate &
Energy Transition



Sustainable Buildings &
Industries



Analysis & Evaluation



- CO2 Mapping LCA analysis
- Energy Audits
- Flexibility and load management audits
- Data collection, surveys and statistical analysis
- Policy impact evaluation

Prospective studies



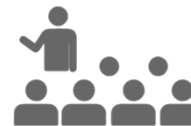
- Scenario development
- Scenario quantification



Transition Support

- Technical feasibility studies
- Strategic development and accompanying measures
- Tools and reference baseline development
- Technical and regulatory advise

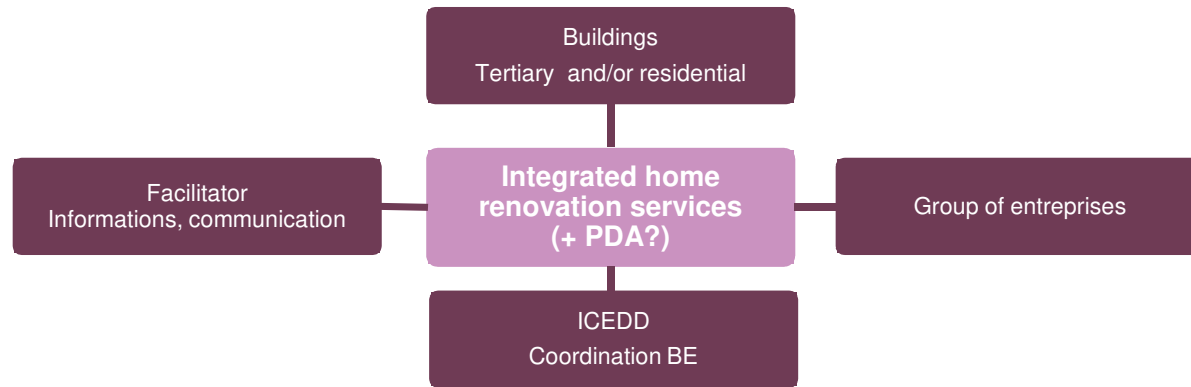
Training & participation



- Tailored training
- Animation of stakeholders network and participatory workshops
- Seminar, study tours and conferences



Buildings LC-SC3-EE-2-2018-2019 - Integrated home renovation services
Investment LC-SC3-EE-11-2018-2019-2020 - Aggregation - Project Development Assistance





Buildings LC-SC3-EE-2-2018-2019 - Integrated home renovation services
Investment LC-SC3-EE-11-2018-2019-2020 - Aggregation - Project Development Assistance

Feuille de route bâtiment



Facilitateur électricité renouvelable et cogénération



Coordination, animation et expertise pour l'accompagnement des chantiers circulaires 2016



Mise en place de solutions financières en matière d'Utilisation Durable de l'Énergie à Bruxelles



Évaluation des réformes récentes du système de primes et de prêts « Énergie et Logement »



BATEX W : des bâtiments « Exemplaires » en Wallonie





Other calls of interest

Thematic EE&EEB Brokerage Workshop –
21/06/2018 – BE Energy Efficiency (Paris)

Buildings

- LC-SC3-EE-5-2018-2019-2020
Next-generation of Energy Performance Assessment and Certification
- LC-EEB-01-2019
Integration of energy smart materials in non-residential buildings

Industry

- LC-SC3-EE-6-2018-2019-2020
Business case for industrial waste heat/cold recovery

Policy

- LC-SC3-EE-16-2018-2019-2020
Supporting public authorities to implement the Energy Union

Soutien à la Procédure d'Avis et de Certification
Energétique des bâtiments résidentiels



TOTEM – Create|Evaluate|Innovate



Audit énergétique Industrie – Process & Utilities



Industore



Plage : vers la mise en place d'une stratégie de gestion
de l'énergie



Roadmap 2050 « Bas Carbone »





Contact Details

Thematic EE&EEB Brokerage Workshop – 21/06/2018 – BE Energy Efficiency (Paris)

Contact person	
Organisation	Sustainable Development Studies and Advice Institute - ICEDD
Adress	4, Boulevard Frère Orban – 5000 Namur – Belgium
Phone number	+32 81 25 04 80
E-mail	mha@icedd.be



Ai ENVIRONNEMENT

OFFICIENCY / Massification of Energy Performance in office buildings

Thematic (Buildings -EE & EEB)

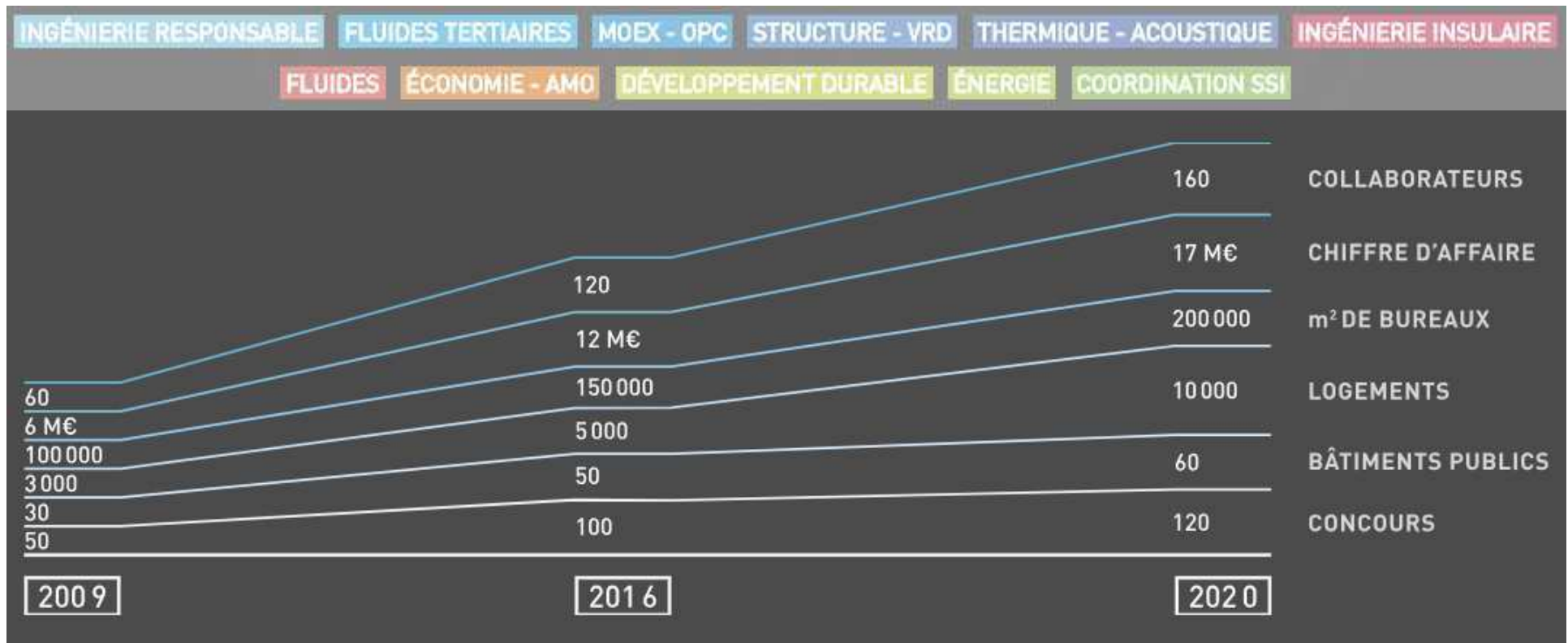
brokerage workshops

EU Brokerage Event on Energy Efficiency in Horizon 2020

Paris, 21st June 2018

AI Environnement - FACEA Group

- A small innovating and R&D team in an engineer design department company well established
- Low carbon and very low consumption buildings



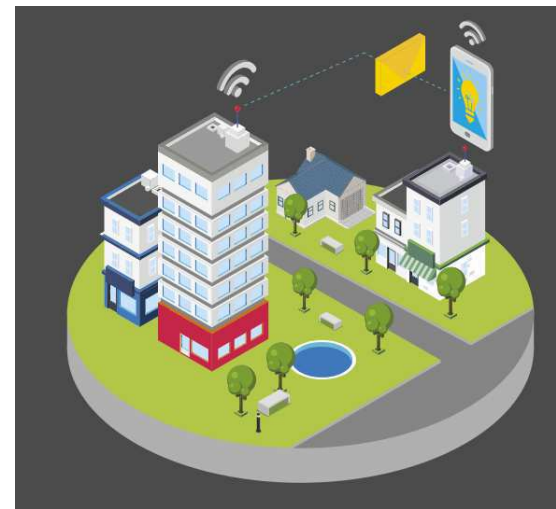
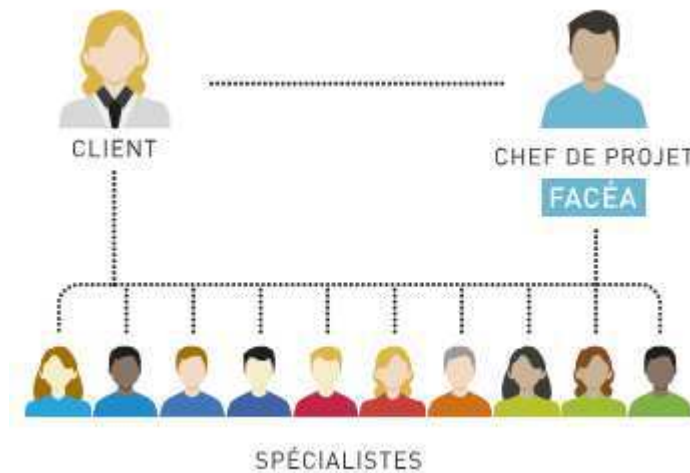
Performance guarantees for refurbished office buildings

- A change in the business model and conceiving method for green buildings that permits new materials, new paradigms and new modeling tools to target and reach an **energy saving up to 60%**.
- Support in technical engineering that can at your request be coupled with a legal package and a financing offer through partnerships.



Contact details

Contact person	Paul-Etienne DAVIER
Organisation	AI Environnement, groupe FACEA
Adress	10 avenue du Val de Fontenay, 94134 Fontenay-sous-Bois Cedex
Phone number	01 49 74 12 10
E-mail	pedavier@ai-environnement.fr



Technological, environmental and management evaluation for innovative construction products and services

Thematic Buildings EE & EEB
brokerage workshops

EU Brokerage Event on Energy Efficiency in Horizon 2020
Paris, 21st June 2018

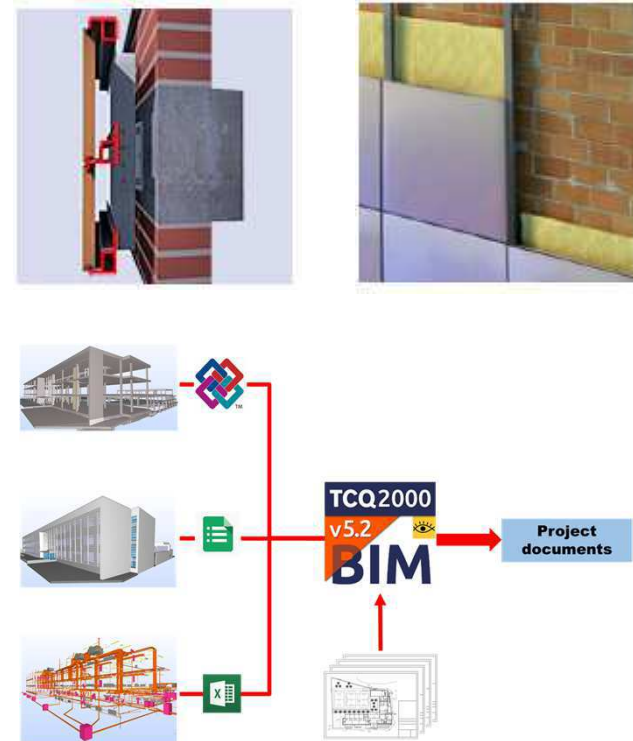
The Catalan Institute of Construction Technology -ITeC

- Non-profit private foundation born in 1978 to support innovation in construction:
 - The generation and transfer of knowledge and technology;
 - The provision of technological services;
 - To be a benchmark institution.
- Experience of EU funded projects if any:
 - Evaluation, minimization and selection of waste (LIFE - 2000);
 - Reducing Construction Environmental Impact (LIFE – 2003);
 - Smart material for insulation (H2020 - 2014);
 - Demonstration of new integrated services new buildings and renovation (H2020 - 2017).



Our expertise

- Technological orientation related to **certification** of innovative and non-standardized products;
- **Databases** of construction elements with embedded information;
- **BIM** standardization and BIM product catalogue;
- **Software** and **tools** development to manage construction processes and make decisions with a LCA point of view;
- **Environmental** assessment of products and construction works;
- **Market research** which combines the economic approach with knowledge of the market from the technical, legal, environmental and commercial point of view;
- Evaluation of the **business model** and **fundraising** processes focused on the circular economy;
- **Training** and **network** contributing in communication and dissemination activities.



Main international projects

- **A) Project N°: LIFE98 ENV/E/00035**
Project Title: Program of technical actions to encourage the evaluation, minimization and selection of waste originated at the work sites during construction and demolition.
Duration: 1998-2000
- **B) Project N°: LIFE03 ENV/E/000150**
Project Title: RECONS - Reducing Construction Environmental Impact of the construction sector activity and to define sustainable waste management strategies.
Duration: 2003-2006
- **C) H2020 Project Grant Agreement number: 636709**
Project title: The HOMESKIN project aims at developing a new silica Advanced Aerogel-Based Composite material possessing the lowest thermal conductivity of all insulation materials found in the market.
Duration: 2015-2017
- **D) H2020 Project Grant Agreement number: confidential**
Project title: Demonstration of new integrated services focused on the use of water, waste, energy and raw materials for the entire life cycle of new buildings and renovation
Year: 2018 – 2022
- **C) Other projects: <https://en.itec.cat/itec/projects/>**



Contact details

Contact person	
Organisation	The Catalonia Institute of Construction Technology - ITeC
Adress	Wellington 19, 08018 Barcelona (Spain)
Phone number	+34 933 09 34 04
E-mail	dsabates@itec.cat

Building envelop specialist : from engineering to market research

Thematic : **Buildings - EE & EEB**
brokerage workshops

EU Brokerage Event on Energy Efficiency in Horizon 2020
Paris, 21st June 2018

Who we are :



- **SME** based in Toulouse (France)
- Specialized in **Consultancy, Research and Development for the building sector**
 - Research & engineering
 - Products & building systems design
 - Socio-economical consultancy
 - Competitive & market intelligence
- **Background of 25 years** in building performance improvement.
- Past recent experience in EU-funded projects :



- FP7 project : development of innovative insulation system (ETICS) with nano-cellular foam insulation material

Partners : Franhauser ICT & IGB, DAW, Smithers Rapra, NEN, ...



www.tribute-fp7.eu

- FP7 project : large-scale integrating project aimed at minimizing the gap between computed and measured energy performances through the improvement of the predictive capability of a state-of-the-art commercial BPS.

Partners : CSEM, Schneider Electric, EQUA, IBM, NXP, Amires, ...

Our expertise :

building specialist from engineering to market research

Our expertise

Market knowledge

Analysis of constraints & needs for the whole chain of actors

- Technical and marketing benchmarking
- Concept testing
- Usage & attitude surveys
- Quantitative & qualitative market research methods
- Road to market
- Socio-economical consultancy

Research topics

Innovative building components and systems

Innovative tools & software

Avant-garde building processes and concepts

Technical services

- Innovation generation process
- Most advanced technologies integration
- Component & system design with 2D & 3D CAD tool (Solidedge)
- 2D&3D thermal calculations (BISCO, TRISCO, SOLIDO)
- Energy behaviour of buildings
- LCA at building level – environmental impact
- Daylight simulations

Contact details

Contact person	Mrs Christel Jimenez
Organisation	tbc Innovations
Adress	2 impasse Michel Labrousse, Maison des Lois, 31 100 Toulouse, France
Phone number	+33 (0)5 34 55 21 85
E-mail	cjimenez@tbcinnovation.fr

Thematic Buildings -EE & EEB brokerage workshop

EU Brokerage Event on Energy Efficiency in Horizon 2020

Paris, 21st June 2018

EMPORIUM and CHESS-SETUP

A solution for mid- and long-term solar heat storage

Buildings EE & EEB topics in working programme

LC-SC3-EE-1-2018-2019-2020 (decarbonisation)

LC-EeB-01-2019 (energy smart materials)

LC-EeB-03-2019 (plus energy houses)

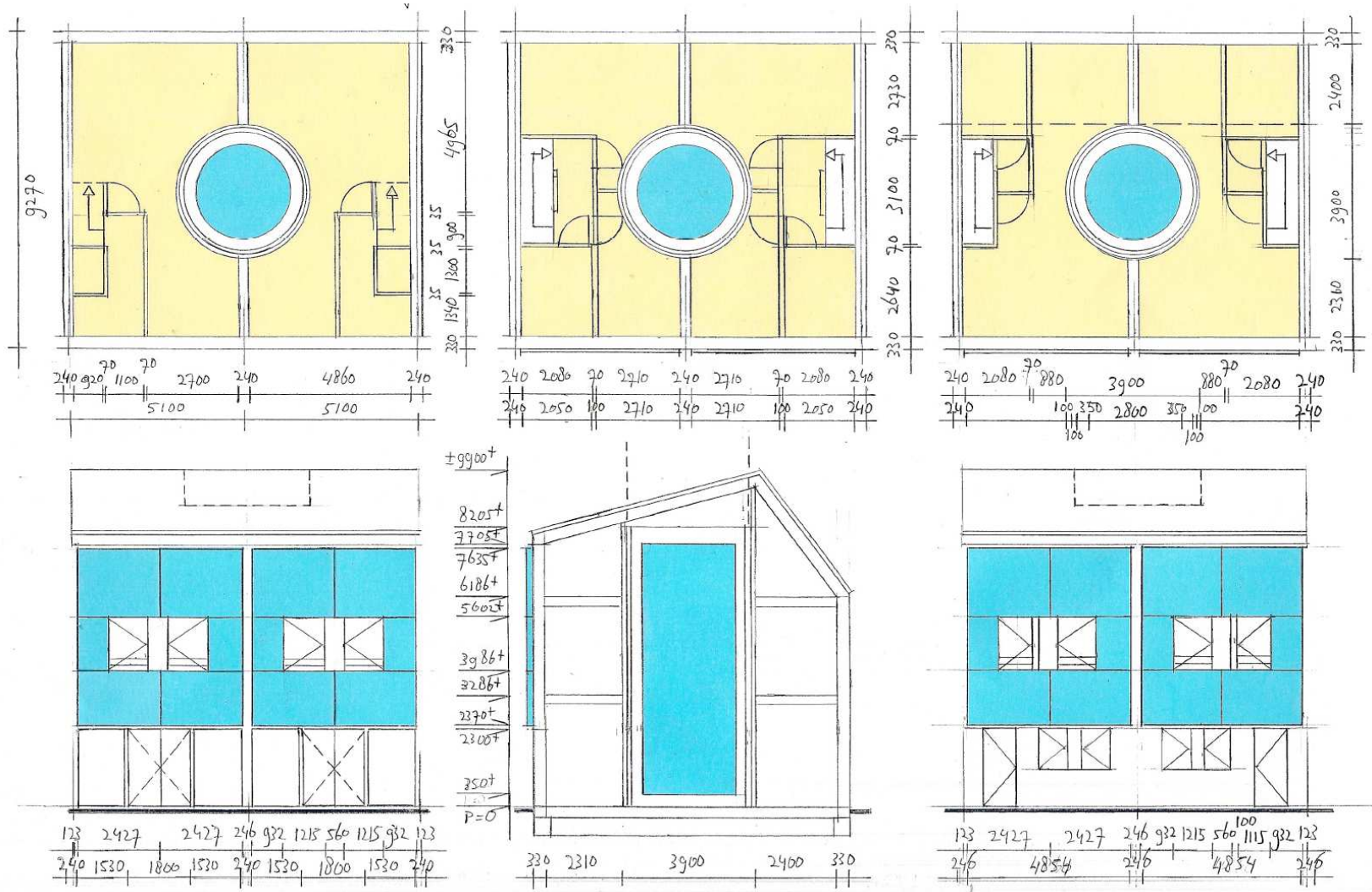
LC-EeB-05-2019-2020 (integrated storage)



- **WANSDRONK**
Architecture, Innovation, Research & Development, SME
- **EMPORIUM**
Zero Emission Building with Integrated Seasonal Solar Heat Storage
- **FP5 PETUS**
Practical Evaluation Tools for Urban Sustainability
- **FP7 MESSIB**
Multi-source Energy Storage System in Buildings
- **H2020 CHESS-SETUP**
Combined Heat Supply System by using Solar Energy and Heat Pumps

EMPORIUM expertise

www.wansdrunk.com



CHESS-SETUP Consortium

www.chess-setup.net

CHESS-SETUP Pilot Projects

proposed view 1



CORBY (UK) / Residential
Earth Energy Bank (EEB) heat storage system

MANLLEU (SP)
(Ecoedifici Lavola)
/ Office
Small scale pilot
Short term storage



SANT CUGAT (SP) / Sports center
Sports center including swimming pools
Large storage tank

Contact details

Contact person	Renee Wansdronk
Organisation	Wansdronk Architectuur
Adress	W.G. Plein 286, 1054 SE Amsterdam, The Netherlands
Phone	+31 85 8784298, +31 6 19716671
E-mail	rw@wansdronk.com

EU Brokerage Event

on KET* in Horizon 2020

Focus on (*) Key Enabling Technologies - nanotechnologies, advanced materials, advanced manufacturing and processing

Conference and Bilateral/B2B meetings
7th June 2018 - Mainz - GERMANY

Calls
2019-2020

Project idea/ Field of expertise:

Demo site or pilot territory for Energy Efficiency renovations in public buildings

Organisation Name:

The Province of Liege (Belgium)

Adressed challenge(s)/ PPP(s):

Climate Action, Environment, Resource Efficiency and Raw Materials / Waste / Fighting and adapting to climate change
Secure, Clean and Efficient Energy

Adressed topic(s) in Work Programme:

Energy Efficiency, Climate change, Smart Cities, Circular economy (Waste management / short food supply chains)

The Province of Liege

- **Institutional information on your organization**

Intermediate Public Authority strongly involved in sustainable development strategies at local level. Focus on tackling climate change through energy efficiency renovations and passive constructions, support to municipalities for implementing local climate plans and raise citizens awareness on climate change.

1,1 inhabitants , 84 municipalities

Main fields of competencies: Education & Training, Culture, Sports and Youth, Health, Social Affairs, Agriculture, **Sustainable territorial development & Support to municipalities and Infrastructures (370 buildings stock's maintenance = 500.000 m²)**

- **Your skills and expertise**

- Success story <http://www.bricker-project.com> FP7 Eeb
- Coordinator of the Covenant of Mayors for Climate and Energy
- Member of the European network “ENERGY CITIES”

- **Past experience in EU-funded projects (if any)**

FP7 and Structural Funds (ERDF, ESF, INTERREG Grande Region and INTERREG EUREGIO Meuse-Rhine)

Our project idea / expertise

We offer **demo-targeted buildings** and/or a **pilot territory** (84 municipalities, 1,1 M inhabitants) for

- the integration of technologies for energy efficiency solutions in the renovation of our public building stock (+/- 400 buildings = 500.000 m²)
- the implementation of actions to tackle climate change
 - ➔ **High potential of replication on the territory**
- Cross-cutting technical, administrative and financial competencies in the 5 provincial Directorate General
- Strong experience in European Project management

Consortium (if any)

Known partners / Competence offer

Name	Type	Country	Role in the project
------	------	---------	---------------------

Partner search

Profile	Type	Country	Role in the project
---------	------	---------	---------------------

Contact details

Contact person	Ms Catherine PINET
Organisation	The Province of Liege – European Funds Dpt
Adress	Rue du Vertbois 13a – 4000 LIEGE
Phone	32-4-237.92.37
E-mail	Catherine.pinet@provincedeliege.be



EE-EC / EE-Spire

EU Brokerage Event on Energy Efficiency in Horizon 2020
Paris, 21st June 2018

OUR COMPANY

LGI is an **actor of the innovation ecosystem**, transforming knowledge and technology into products, processes and services that **fuel a more sustainable economy**

150

MISSIONS
SINCE 2005

19

COUNTRIES IN
WHICH WE ARE
ACTIVE

24

H2020 PROJECTS
INVOLVED

TEAM



30

TALENTS



55%

WOMEN



12

LANGUAGES

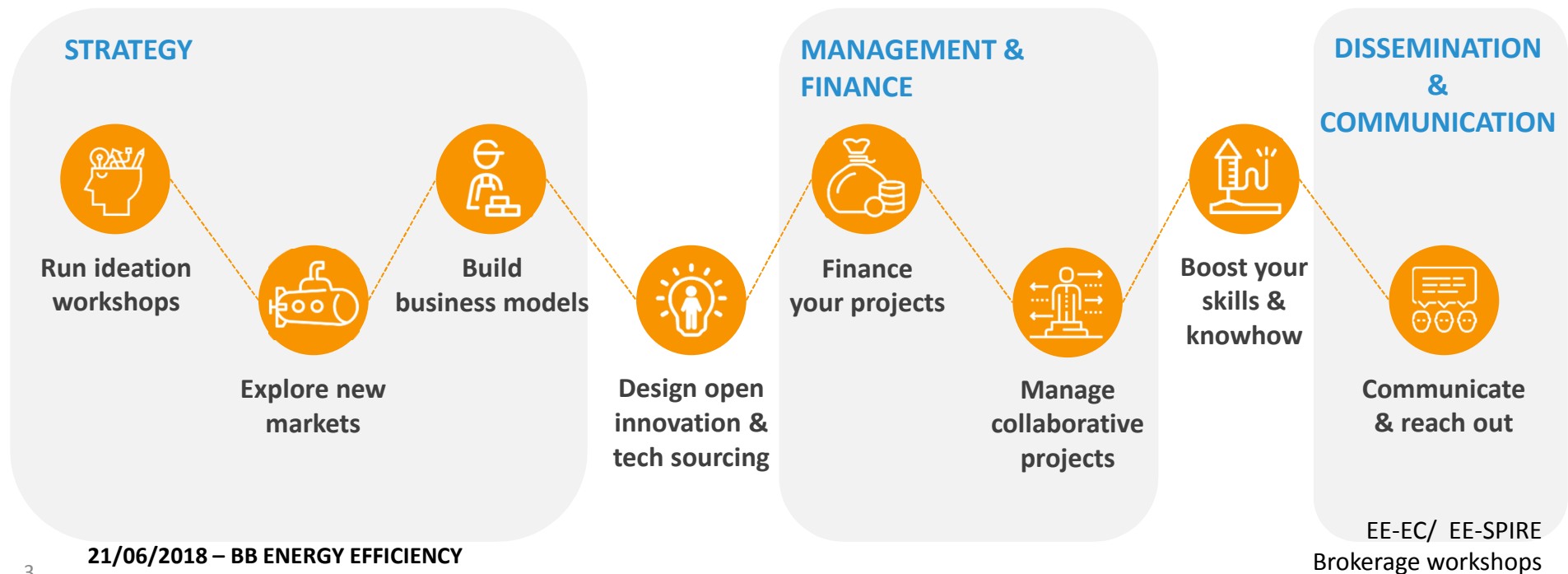


4

PhD

WHAT WE DO

We enable innovation. From ideation all the way through to market delivery.



TOPICS OF INTEREST

LC-SC3-EE-13-2018-2020: Enabling next-generation of smart energy services valorizing energy efficiency as energy resource



In this smart city project, several innovative solutions for energy efficiency are demonstrated (photovoltaic thermal, district heating, electric vehicles, etc.) in two cities in Denmark and in Sweden



The project aimed at developing a web-based decision-support tool that provides information to key stakeholders on future building energy consumption and the most adapted business models for the solutions. The work included a market research, stakeholder mapping, +100 interviews, identification of innovative business models and the functional analysis and conception of the business model software.

LC-SC3-EE-6-2019: Business case for industrial waste heat/cold recovery



The project aims to develop and demonstrate one heating and one cooling system for office buildings, and one heat recovery system for industrial processes. The systems will be demonstrated at four demo sites.



Contact details

CONTACT US



LGI Headquarters

6 Cité de l'Ameublement 75011 Paris - France



+33 (0)1 8416 3073



soraya.moliner@lgi-consulting.com



www.lgi-consulting.com

FOLLOW US!



TWITTER @LGI_Consulting



INSTAGRAM lgi_sustainableinnovation



LINKEDIN linkedin.com/company/lgi-consulting