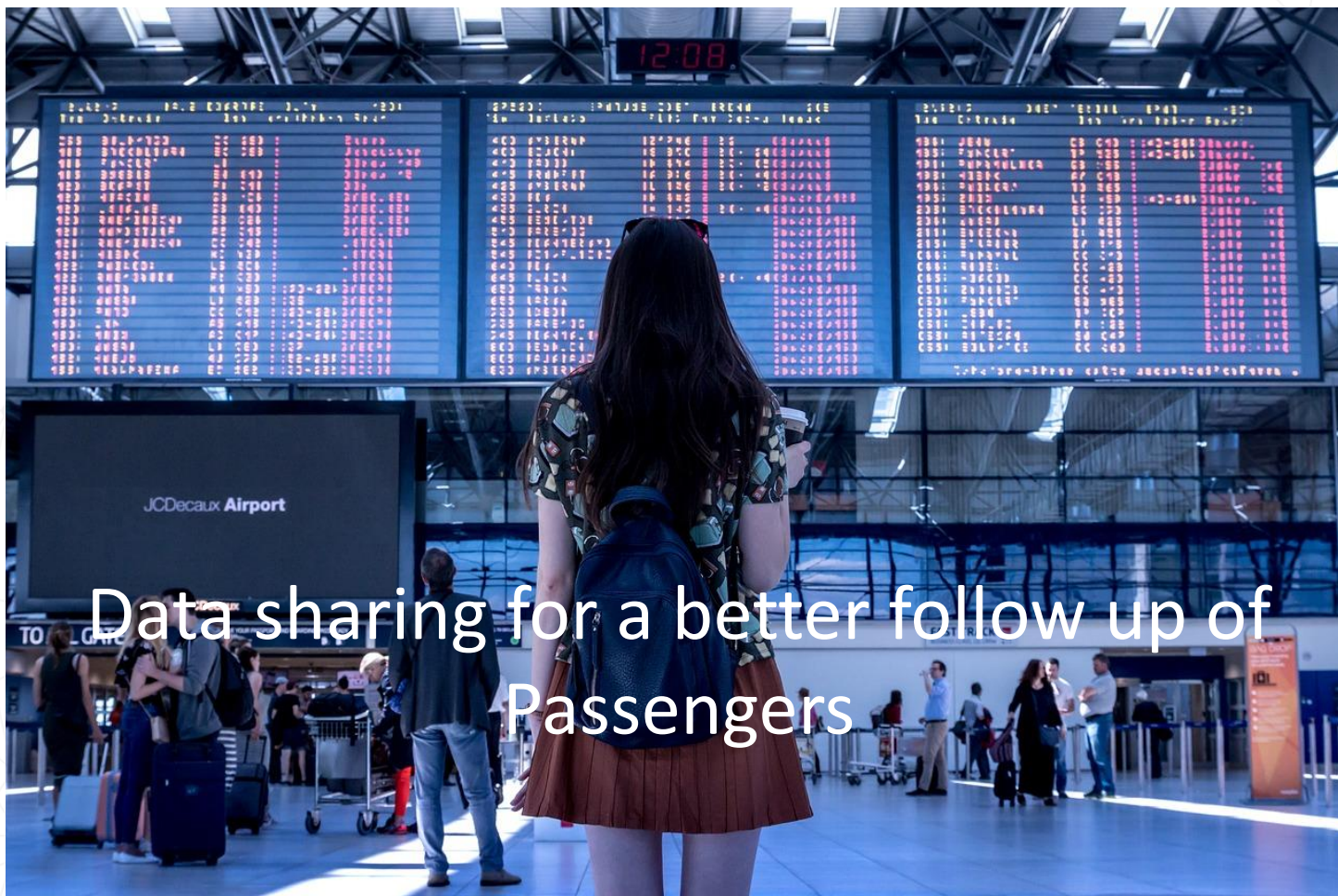


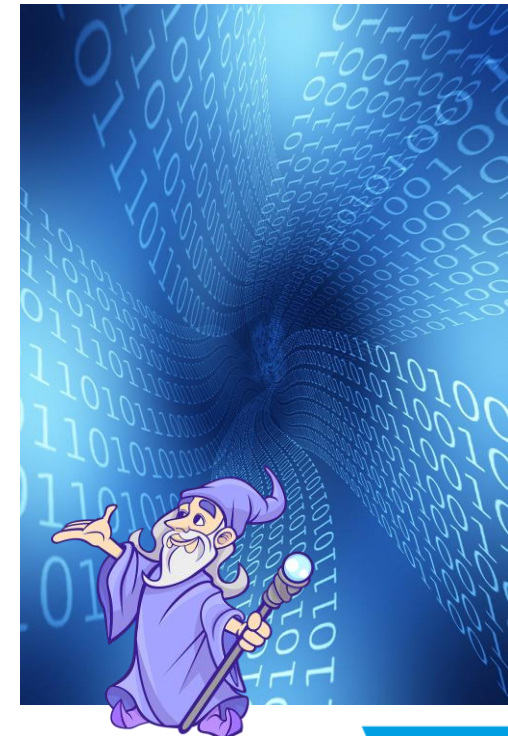
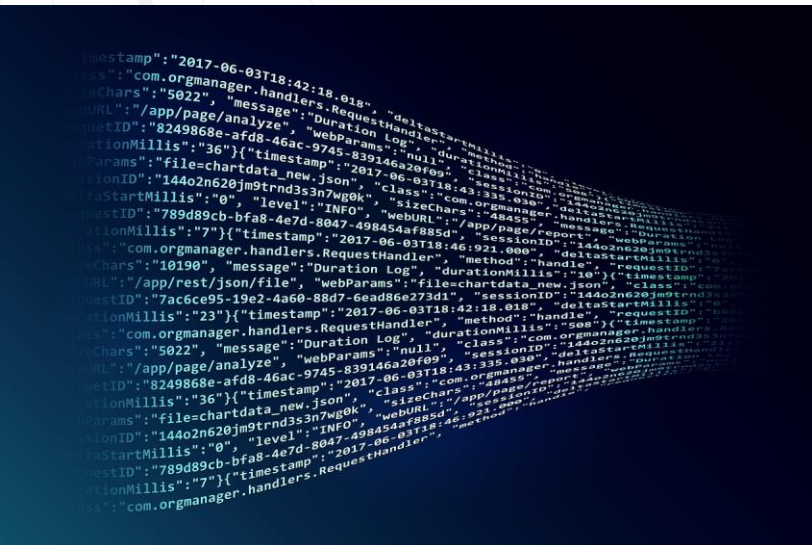
# INFODAY 11th september



Presented by Georges Mykoniatis  
mailto:georges.mykoniatis@enac.fr

# Content

- Passenger Centric Approach
- Smart4PAX
- Smart Data sharing: the Backbone



# Passenger Centric Approach

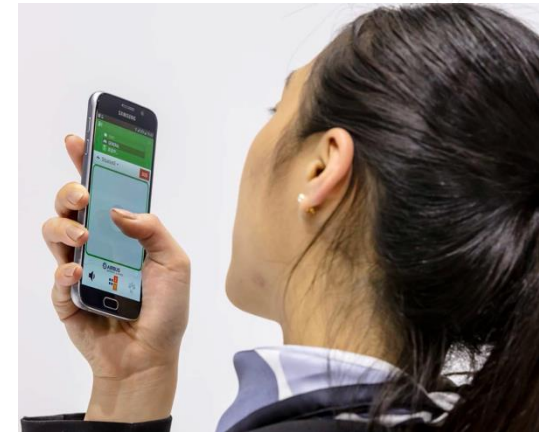
- [Project Meta CDM 2012](#)
- Amadeus (a customer-centric approach to irregular operations), Sabre > a customer-centric airport, IATA StB : Simplifying the Business, IATA – ACI > NEXTT  
<http://nextt.iata.org/?page=main&data=passenger>
- Intelligent Transport Systems and Services World Congress 2014 Helsinki:

**Mobility as a Service (MaaS) constitutes the integration of various forms of transport services into a single mobility service accessible on demand**



# Smart4Pax

**Mobility as a service  
for enhancing passenger experience  
Healthy, Safe, Secure, Efficient,**





# Smart for Safety and Security

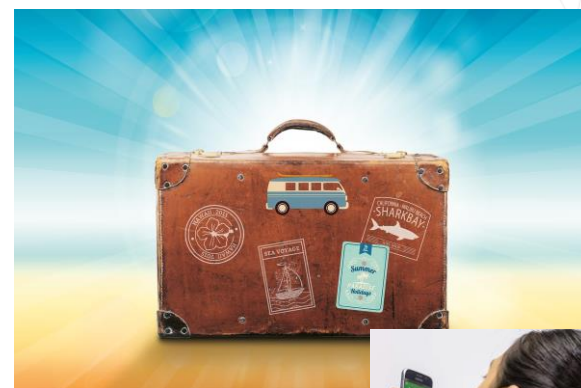


- E.g. Secure exchanges to reduce the constraint of controls in the airports and Train stations improve the safety and security holistic survey approach.

# Smart for Multi-Modality

- The transportation system is split in various mode of transport, the objective here is to break the walls and offer to the passenger a travel experience that, it deserves

Efficient combination of various transport modes according to passenger expectations, an «Unique electronic ticket » for the whole journey..., environmental issues...



- Passenger in the centre of the decision-making process

key stakeholders take decision by taking into account passenger concerns

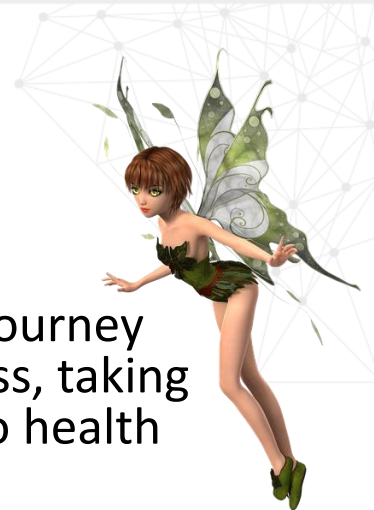
# Smart for Mobility As A Service

- New set of services for the traveller journey, new services to facilitate the traveller's empowerment and autonomy. Beyond traditional transport modes organized by operators, additional services indeed provide travellers with means to organise, control and optimise their own door-to-door mobility and to turn their travel time into useful or even enjoyable time.





# Smart4PAx - 4 Pillars



- **Smart for Enhancing passenger experience**, new relation to the journey putting the passenger in the centre of the decision-making process, taking into account Passengers profiles, needs and expectations and also health and wellbeing concerns.
- **Smart for Safety and security**, (e.g. secure exchanges to reduce the constraint of controls in the airports and Train stations improve the safety and security holistic survey approach)
- **Smart for Multi-modality**, efficient combination of various transport modes according to Passengers expectations, an “Unique electronic ticket » for the whole journey..., the environmental issues...
- **Smart for Mobility as a service**, new set of services for the traveller journey, new services to facilitate the traveller’s empowerment and autonomy. Beyond traditional transport modes organized by operators, additional services indeed provide travellers with means to organise, control and optimise their own door-to-door mobility and to turn their travel time into useful or even enjoyable time.



# Smart Data: The New Travel Journey Backbone



Transport Networks



Airlines



Passengers' Health and wellbeing



Airports

Stations



Train



Passenger decisions

Operations

Operations

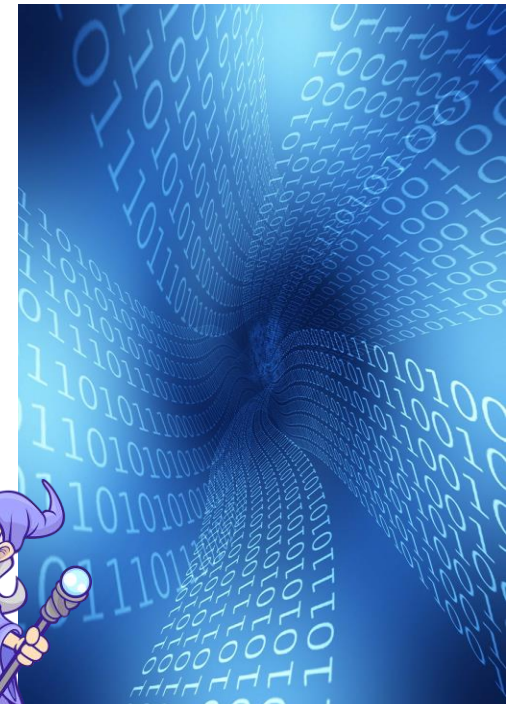
339	MÜNCHEN	2 1950
933	BERLIN-TEGEL	2 1950
8260	FRANKFURT	2 2000
5525	BUDAPEST	2 2005
1508	PARIS-CDG	2 2040
3248	ISTANBUL	2 2040
939	HURGADA	2 0205
2378	IZMIR	1 0320
	FUERTEVENTURA	2 0325





# Conclusions

- Transport Domain ambition:
  - Passenger Centric Approach
  - Mobility As A Service
  - Smart4Pax is one of the initiatives
- Smart Data sharing :  
the backbone of the new concepts

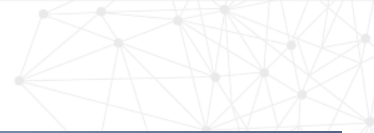


- Consortium status:
  - SINTEF (Norway)
  - ENAC (France)
  - YNCREA Méditerranée (France)
  - Montimage (France)
  - Airbus (France)
  - CEA Tech Occitanie (France)
  - VTM-Global (Portugal)
  - IST (Instituto Superior Técnico) (Portugal))
  - Ro Technology. (Italy)
  - Univ. of Parma, (Italy)
  - Università degli Studi dell'Aquila (Italy)
  - Institute of Electronics and Computer Science - EDI (Latvia)
  - ASELSAN A.Ş.(Turkey)
  - Marmara University (Turkey)
  - CISC Semiconductor GmbH (Austria)
  - University of Cantabria (Spain)
- Available key players and capabilities
  - On-going: Airports, Cities, Rail (contact with shift2Rail), Road, maritime...
- Missing capabilities and/or partners
  - Health survey during the journey
  - intelligent transport systems (research + industry)
  - Entertainment during the travels

## Our team



**Mailto: [georges.mykoniatis@enac](mailto:georges.mykoniatis@enac)**  
**Object: Smart4PAX**



# L'ENAC : LA GRANDE ECOLE DE L'AVIATION CIVILE

Thank you ...

