

@ShapeEnergyEU



SHAPEENERGY

SOCIAL SCIENCES AND HUMANITIES FOR
ADVANCING POLICY IN EUROPEAN ENERGY

Project presentation

Paris 2019

Nathalie Ortar
Directrice de recherche



This project has received funding from the European Union's Horizon 2020 research and innovation programme under grant agreement No 731264.



ENTPE
L'école de l'aménagement durable des territoires



What is SHAPE ENERGY?

Social Sciences and Humanities (SSH) for
Advancing Policy in European Energy

www.shapeenergy.eu

- February 2017-2019
- H2020 Platform working to develop Europe's expertise in using and applying energy-SSH
- @ShapeEnergyEU
- Bi-monthly newsletter, sign up via website

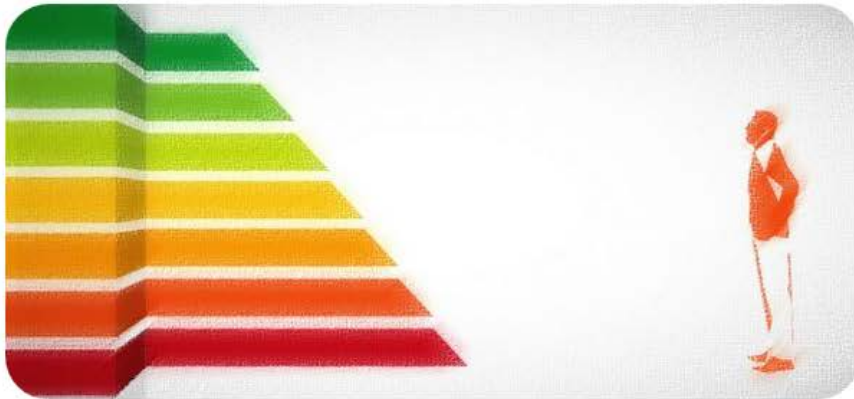


Shape Energy project

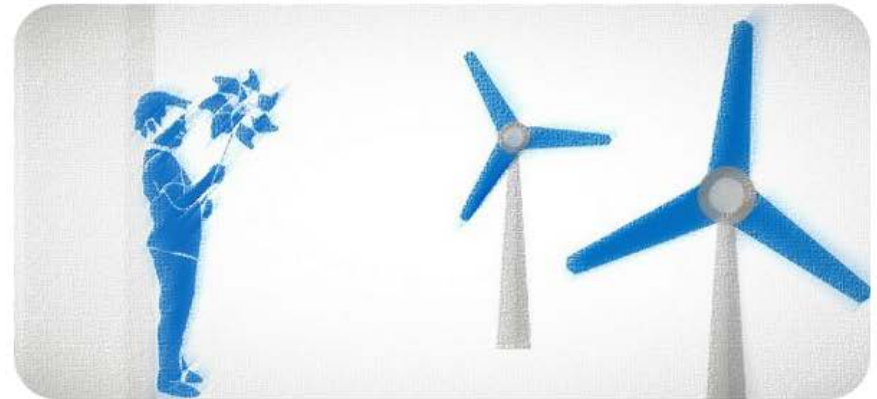
- ✓ SHAPE-ENERGY aims to develop Europe's expertise in using and applying energy-SSH.
- ✓ The platform unites those who 'demand' energy research, because they can use it to develop practical initiatives, with those who 'supply' that research.
- ✓ Each of the Platform Activities creates space for these two groups to meet and collaborate in 'shaping' the European energy agenda.
- ✓ This is supposed to build deep and shared understanding of what is needed and what is possible, as well as stretching their collective ambition.

Shape Energy annotated bibliographies

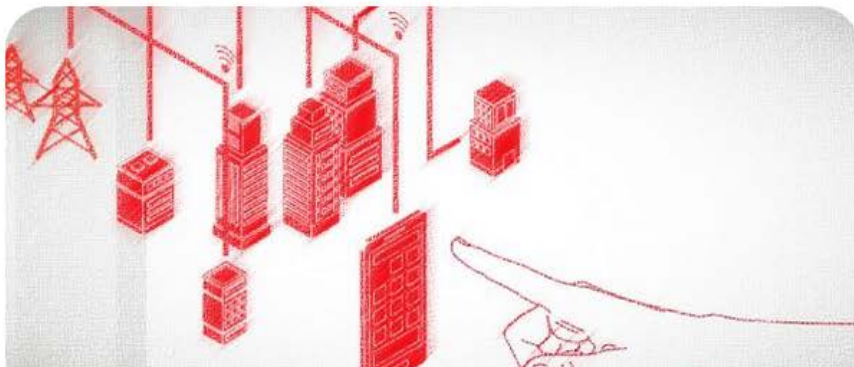
ENERGY EFFICIENCY AND USING LESS



COMPETITIVE, SECURE, LOW-CARBON ENERGY SUPPLY



ENERGY SYSTEM OPTIMISATION AND SMART TECHNOLOGIES



TRANSPORT SECTOR DECARBONISATION



Shape Energy ESR's activities



Mapping of
places of
residence and
places of
internship of the
Early-Stage
Researchers


Shape Energy summer school June 2017



Shape Energy sandpits

The aim was to :

- reflect on current direction and task in individual projects;
- generate concrete ideas for increasing impacts on society;
- experience innovative methods of interdisciplinary and cross-sector working within energy and transport projects;
- meet cross-Europeans collaborators in a stimulating environment and generating future project ideas for progressing energy related topics.



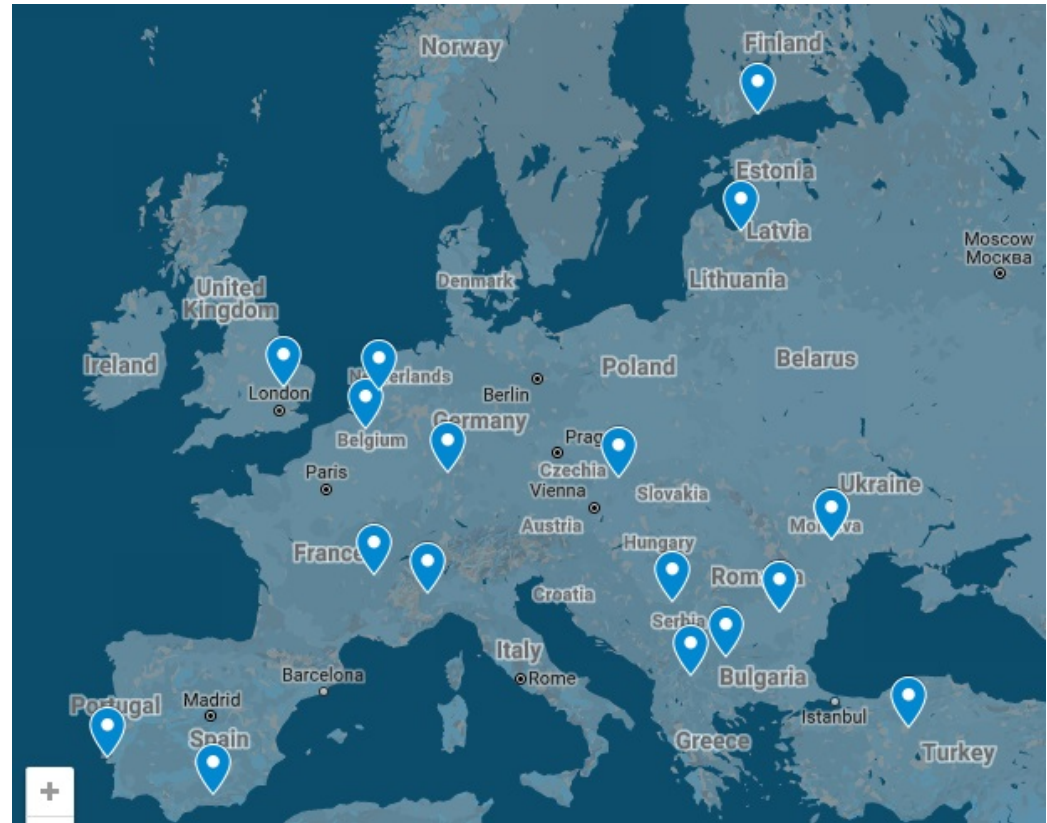
What is a
'sandpit'?

A sandpit is a short, intensive event aimed at generating new ideas and new collaborations. It provides time and space away from the day-to-day running of a project to reflect upon and consider future directions. It can for example help facilitate 'blue sky' thinking, and consideration of radical new questions and methods.



SHAPE ENERGY multistakeholders workshops

- Bringing together local stakeholders around local energy problems
- 17 cities across Europe
- Exploring the non-technological issues connected to real-world problems



SHAPE ENERGY final recommendations

**1**

SSH must feature more explicitly in Horizon Europe's energy research and innovation funding opportunities, compared to Horizon 2020.

+ [Read more](#)

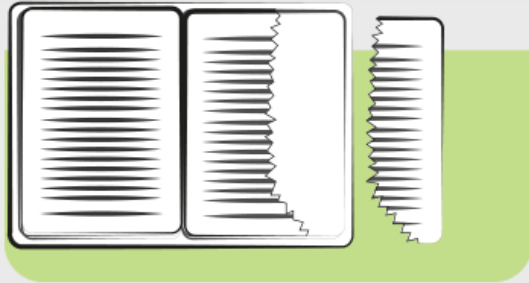
+ [Useful resources](#)

**2**

Core SSH issues need to be more deeply integrated into technical energy projects which seek to address societal challenges.

+ [Read more](#)

+ [Useful resources](#)



3 Horizon Europe energy calls should explicitly consider which SSH disciplines they focus attention on, and report on how this is being addressed.

+ [Read more](#)

+ [Useful resources](#)



4 The European Commission should more actively recruit energy-SSH expertise for Horizon Europe's proposal evaluator databases and panels.

+ [Read more](#)

+ [Useful resources](#)



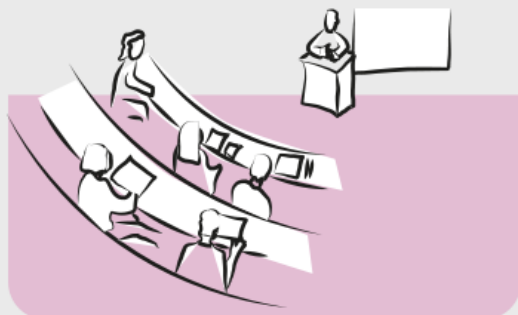
5 SSH should feature in interdisciplinary energy projects' concepts (i.e. setting the project direction), not only as a tool to generate impact (i.e. an add-on at the end).

+ [Read more](#)

+ [Useful resources](#)

SHAPE ENERGY final recommendations more on:

<https://shapeenergy.eu/index.php/agenda-2020-2030/>

**6**

Energy-SSH tasks should be undertaken by those with relevant background and training.

+ Read more

+ Useful resources

**7**

Qualitative measures are needed for the European Commission to meaningfully monitor the successful integration of SSH in energy projects.

+ Read more

+ Useful resources

Energy-SHIFTS

*Energy Social sciences & Humanities
Innovation Forum Targeting the SET-Plan*

*Response to H2020 call LC-SC3-CC-4-2018 –
Support to sectorial fora.*

*ARU, EERA, DRIFT, NTNU,
Jagiellonian University, E3G,
Acento Comunicacion*

€1m, runs from April 2019

The logo for Energy-SHIFTS features the word "Energy" in a bold, blue, sans-serif font with a horizontal line underneath it. Below "Energy" is the word "-SHIFTS" in a bold, lime green, sans-serif font.

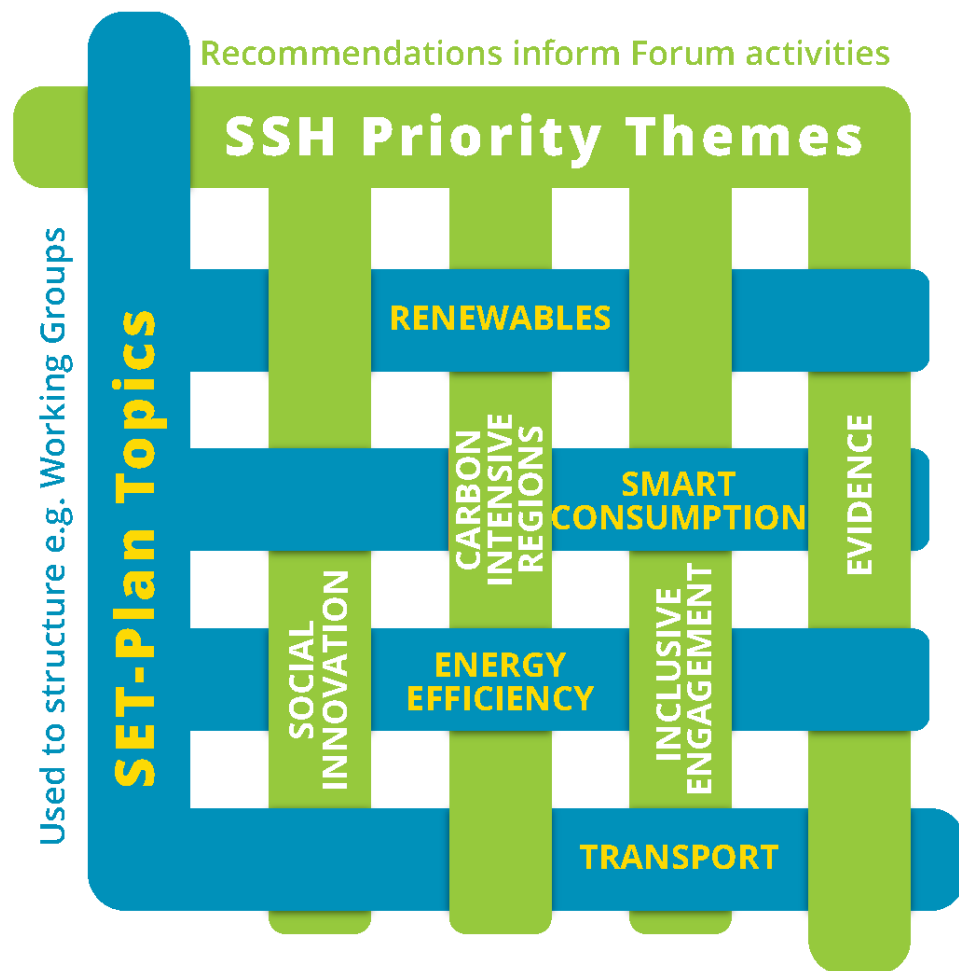
www.energy-shifts.eu

Scoping workshops on SSH priority themes

Running spring/summer 2019

Rotterdam, Prague, Paris, Brussels

Each will result in review + recommendations



Expert Working Groups

*Renewables, Smart
Consumption, Energy
Efficiency, Transport*

*25+ SSH academics, across
disciplines, geographies*

*Iterative Delphi method to
explore cutting edge results
in the area*



Policy Fellowship scheme

20 Policy Fellows, from across government, think tanks, NGOs, etc.

Framed around each Fellow's live energy questions and issues

Each Fellow meets with up to 6 energy-SSH academics with expertise in that area



Working with the SET-Plan and ETIPs

Scoping discussions with other sectorial fora, SET-Plan groups, ETIPs

Early guides on the role of SSH in the ETIPs and the SET-Plan

Links to SET-Plan conference/events

Key resource: online policyworker (and researcher) databases



SHAPEENERGY

Nathalie.ortar@entpe.fr



Anglia Ruskin University

Global Sustainability Institute



KIT
Karlsruhe Institute of Technology



POLITECNICO DI TORINO



NTNU
Norwegian University of Science and Technology

ORTA DOĞU TEKNİK ÜNİVERSİTESİ
MIDDLE EAST TECHNICAL UNIVERSITY

Tomas Bata University in Zlín
Faculty of Management and Economics



BSERC
black sea energy research centre



energycities



friends of europe



DuneWorks
onderzoek & advies voor duurzaamheid



acento comunicación



This project has received funding from the European Union's Horizon 2020 research and innovation programme under grant agreement No 731264.