



European
Commission



MARIE SKŁODOWSKA- CURIE ACTIONS

Innovative Training Networks (ITN)

Sally Taylor
Research Executive Agency

Web-streaming training for ITN
15 January 2014

*Research
Executive
Agency*



Objectives

- Training innovative early-stage researchers.
- Mobility across sectors, countries and disciplines.
- Skills to match public and private sector needs.
- Attractive working and employment conditions.
- Excellence in doctoral/early-stage research training.
- Collaboration between the academia and non-academic sectors.

Who can apply?

- Networks of organisations involved in research and (research) training.

What types of organisations can apply?

- Two different types:



- **Academic sector:** public or private higher education establishments awarding academic degrees, public or private non-profit research organisations whose primary mission is to pursue research, international European interest organisations (e.g. CERN, EMBL) and the EU's Joint Research Centre.



- **Non-academic sector:** includes any entity not included in the academic sector, e.g. large companies, SMEs, NGOs, museums, hospitals, international organisations (e.g. UN).

Participants from which countries can apply?

- EU Member States (MS)
- Associated Countries (AC)
- Other Third Countries (OTC)

Minimum Country Participation in an ITN

Implementation Mode	Country of participant(s)
European Training Network (ETN)	3 different countries: MS or AC
European Industrial Doctorates (EID)	2 different countries: MS or AC
European Joint Doctorates (EJD)	3 different countries: MS or AC

- Above the minimum number, participants in other countries are eligible to participate.
- Participants located in OTCs listed in Annex A to the Work Programme may receive funding.
- International organisations or participants in an OTC not listed in Annex A will only receive funding in exceptional cases.

Participants

Academic and non-academic organisations can take part as either a **beneficiary** or a **partner organisation**:

Network Status	Signs the Grant agreement	Recruitment of Researchers	Training and / or Hosting of Seconded Researchers	Participation in Supervisory Board	Directly Claims Costs
Beneficiary	✓	✓	✓	✓	✓
Partner organisation	X	X	✓	✓	X

NB. Each partner organisation must include a letter of commitment in Part B of the proposal. The precise role of each partner organisation should also be clearly described in the proposal.

Early Stage Researchers

Innovative Training Networks are **exclusively** for **early-stage researchers** in the first 4 years (full-time equivalent research experience) of their career and not awarded a PhD at the time of their (first) recruitment.

- Full-time equivalent research experience is measured from the date when a researcher obtained the degree which would formally entitle him or her to embark on a doctorate, either in the country in which the degree was obtained or in the country in which the researcher is recruited
- Researchers recruited for min. 3 months and max. 36 months.
- No restrictions based on nationality.

Mobility rule

- The researcher must not have resided or carried out his/her main activity (work, studies, etc.) in the country of his/her host organisation for more than **12 months in the 3 years** immediately prior to his/her (first) recruitment.
- Compulsory national service and/or short stays such as holidays are not taken into account.
- **Exception:** for international organisations, the mobility rule does not apply to the hosting of eligible researchers. However, the appointed researcher shall not have spent more than 12 months in the 3 years immediately prior to recruitment at the same organisation.

3 implementation modes

Indicative budget

**European
Training
Networks**

349.68 MEUR
8 scientific panels

**European
Joint
Doctorates**

30 MEUR
Separate evaluation panel

**European
Industrial
Doctorates**

25.5 MEUR
Separate evaluation panel

405.18 MEUR

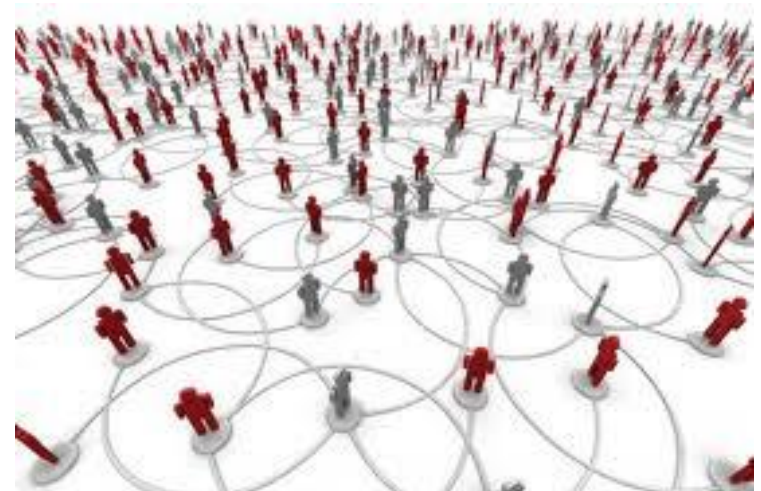


Common features

- International network of partners which recruit and host ESRs based on joint research training/doctoral programme.
- Research fields chosen by applicants in multi/interdisciplinary and emerging fields of S&T.
- Training through individual research projects within the framework of the overall research topic.
- Meaningful exposure to the non-academic sector.
- Supervisory Board.
- Typical project duration 48 months.

Typical activities

- Network-wide training activities (e.g. seminars, workshops and summer schools).
- Training in key transferable skills.
- Collaboration and exchange of knowledge within the network.
- Communication & Dissemination.
- Public engagement.





European
Commission

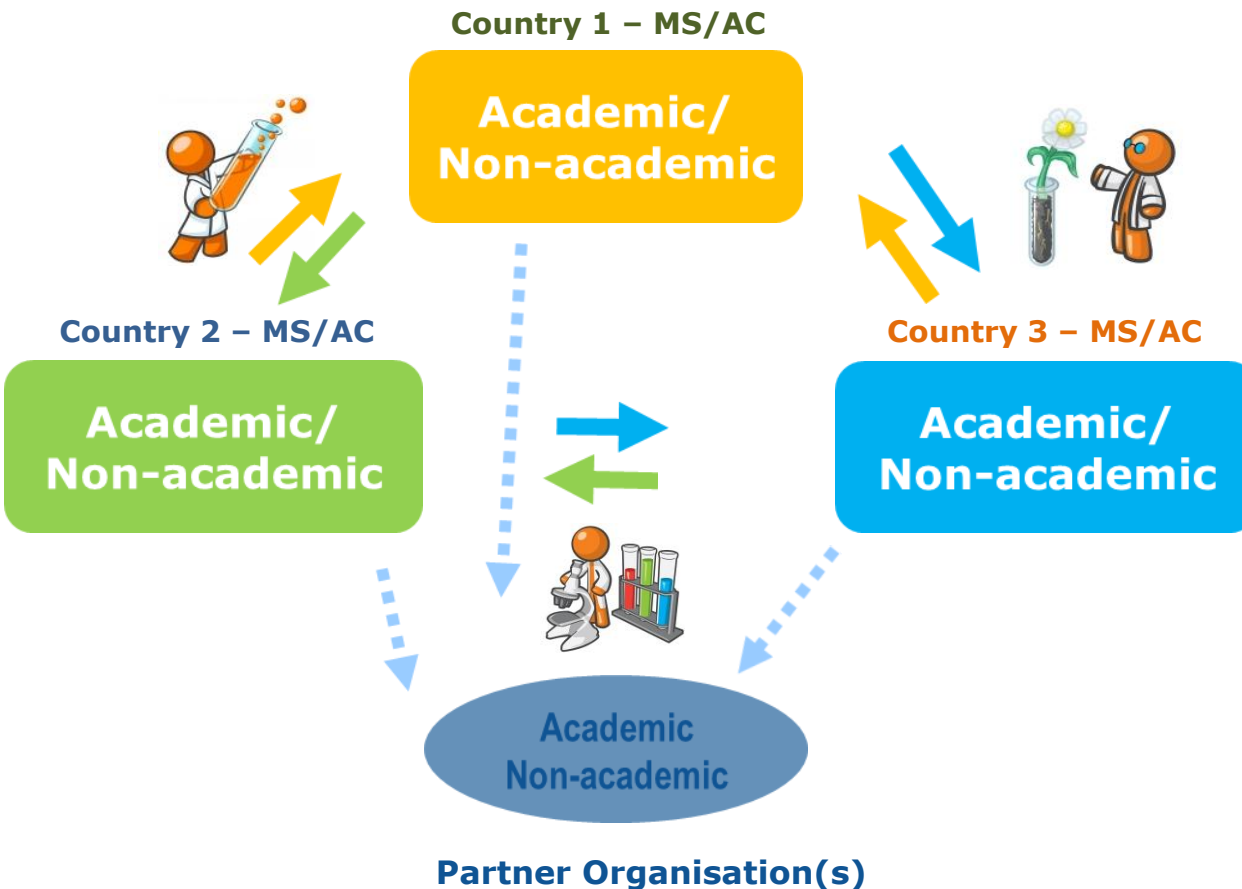
European Training Networks (ETN)

Research
Executive
Agency





ETN

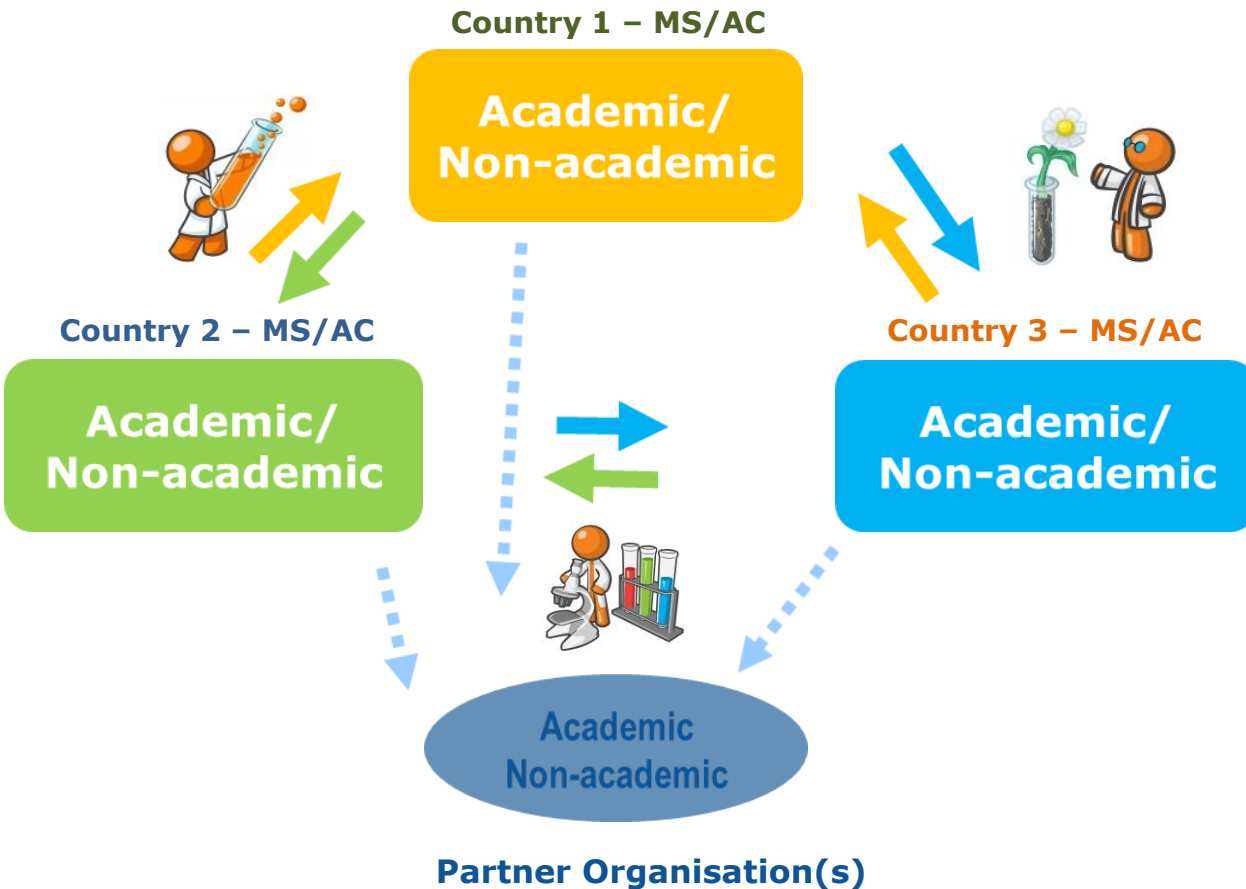


Network composition:

- Min 3 beneficiaries from 3 MS/AC. **Typical size: 6-10** participants.
- Each beneficiary must recruit and host at least one researcher at its premises.
- Participation of **non-academic sector** considered essential.



ETN



- Maximum of **540 researcher months** for the network.
- **Secondments** to other beneficiaries and/or partner organisations up to 30% of the researcher recruitment period.
- **Joint supervision** encouraged.
- Maximum **40%** of total budget to one country.



MARIE SKŁODOWSKA- CURIE ACTIONS

EID European Industrial Doctorate

Lionel BOILLOT

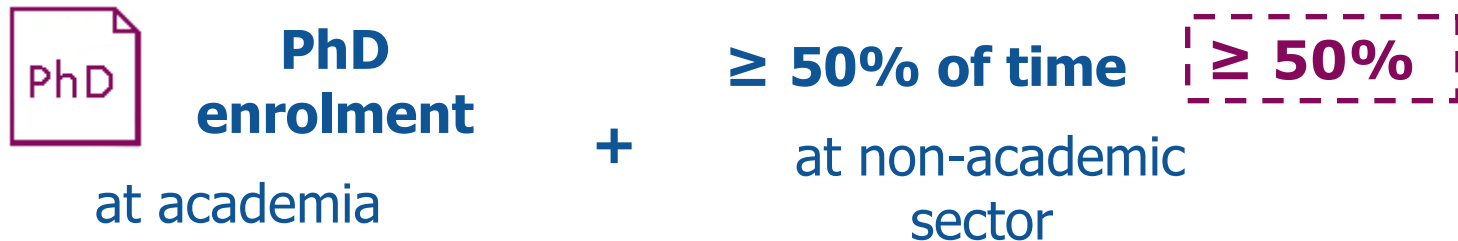


EID in a few words

What?

EID is about Doctoral training in collaboration with non-academic sector

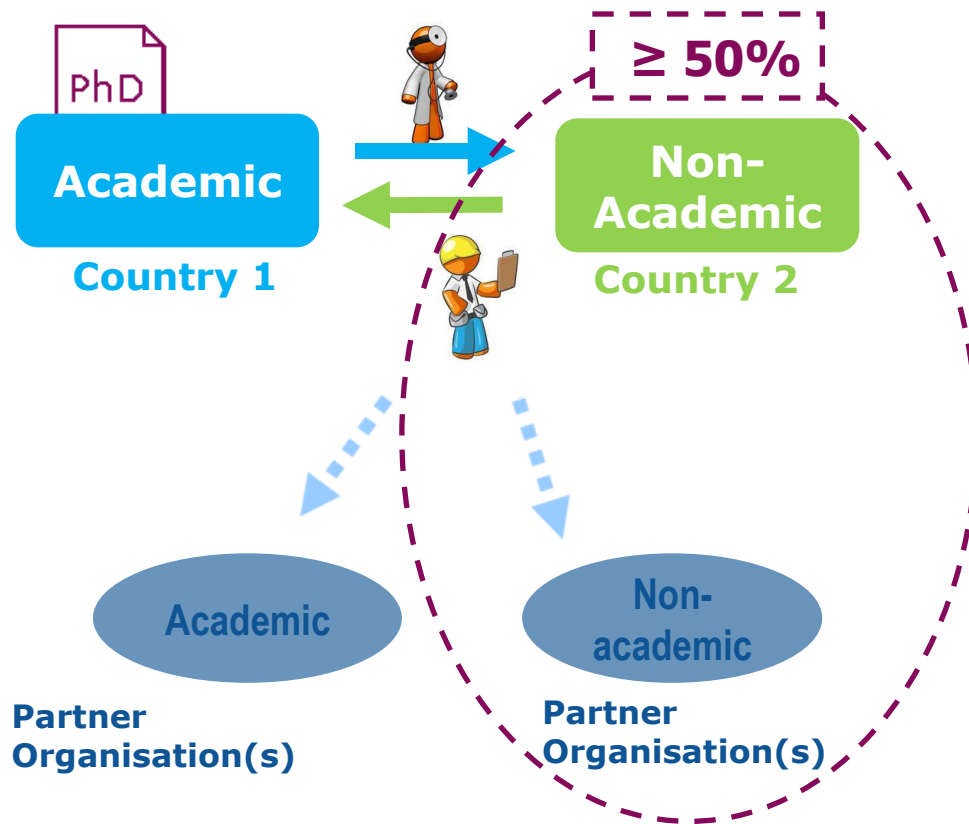
How?



With...

Joint selection, training and supervision
Mandatory consortium agreement

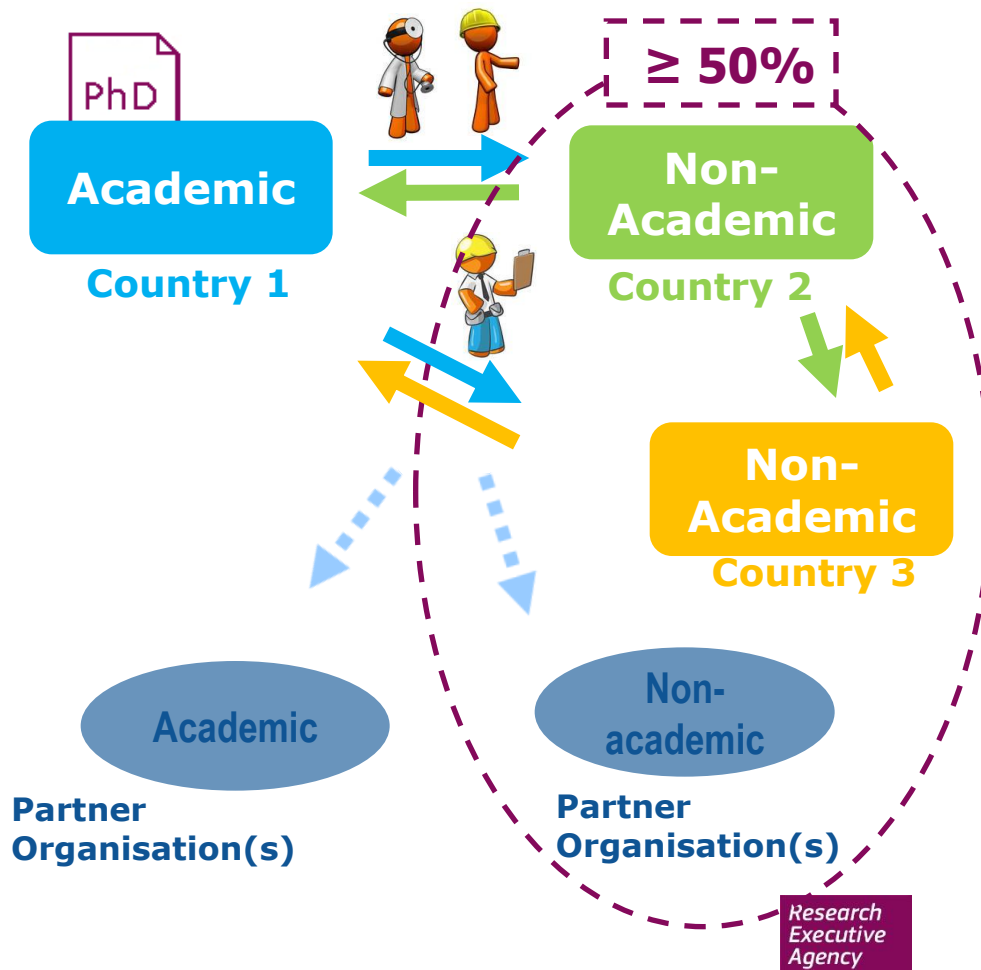
EID – 2 beneficiaries



- **2 beneficiaries**
 - 1 academic
 - 1 non-academic
- 2 countries (MS/AC)
- **Max. 180 researcher-months**
- PhD enrollment
- > 50% of time at non-academic sector
- Joint supervision

EID – Multi-beneficiaries

- **3+ beneficiaries**
 - Min. 1 academic
 - Min. 1 non-academic in 2 countries (MS/AC)
 - Additional beneficiaries any sector, any country
- **Max. 540 researcher-months**
- **PhD enrollment**
- **> 50% of time at non-academic sector**
- **Joint supervision**





Option 1

Option 2

EID Recruitment

Each researcher is recruited:

- 100% by a beneficiary and sent to other partner(s) for the share of time foreseen in the project/mode,

OR

- Separately by each beneficiary for the period of time they spend there.

When selecting the recruitment option, consider:

- Influence on salary (country correction coefficients)
- Ease of implementation



European
Commission



MARIE SKŁODOWSKA- CURIE ACTIONS

European Joint Doctorates (EJD)

Audrey ARFI

Research
Executive
Agency



Objectives of EJDs

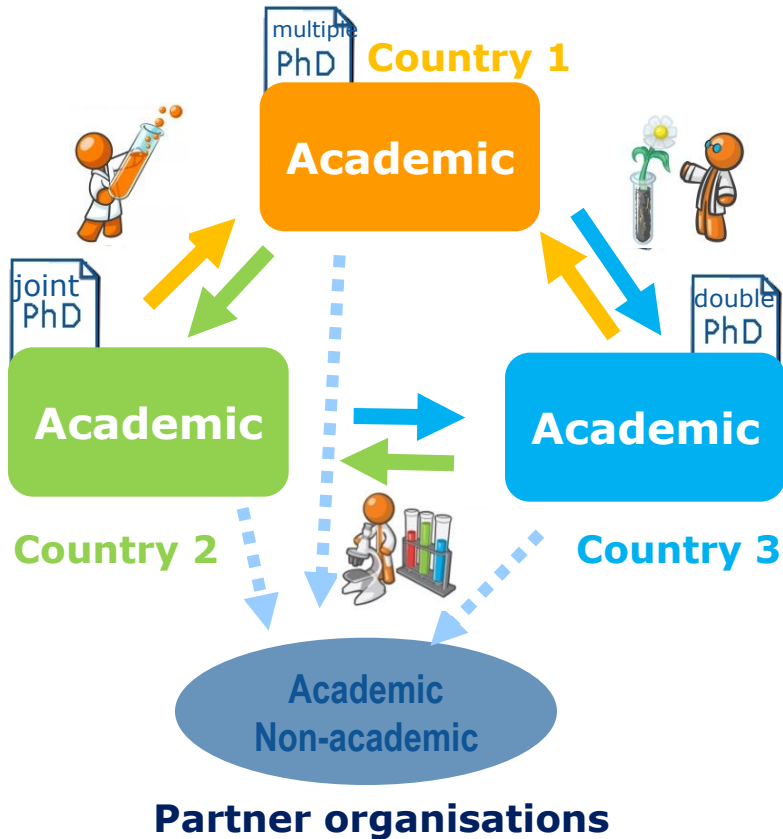
- **international, intersectoral** and **multi/inter-disciplinary** collaboration in doctoral-level training in Europe
- Creation of **joint doctoral programmes**
- Delivery of **joint, double or multiple doctoral degrees**

Joint/double/multiple degree: definitions

Joint degree : single diploma issued by at least two higher education institutions offering integrated programme and recognised officially in the countries where the degree-awarding institutions are located

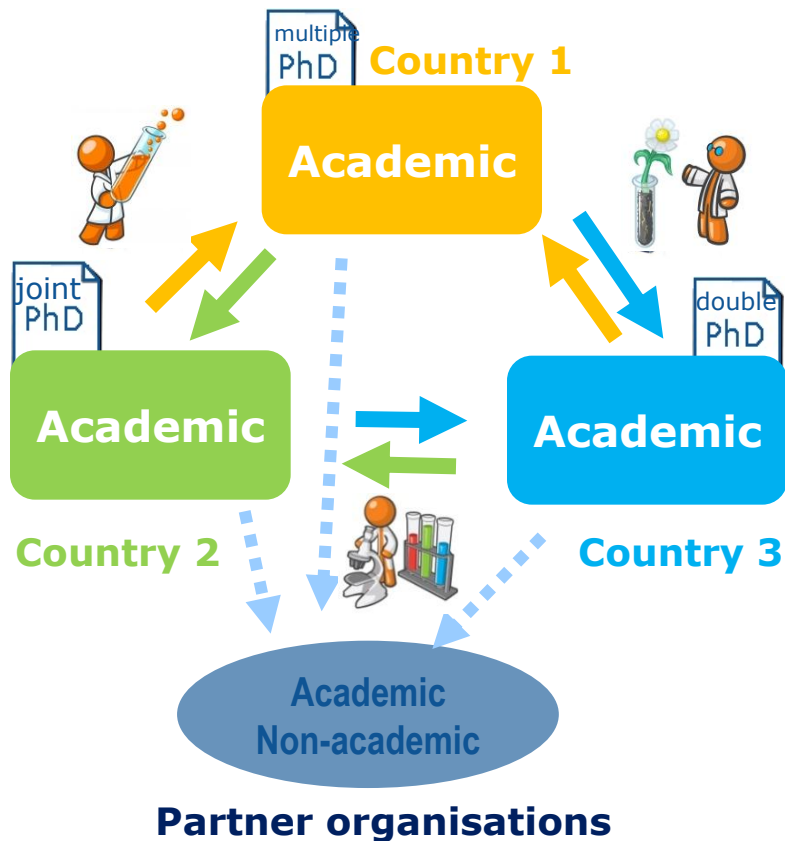


Double or multiple degree: two or more separate national diplomas issued by two or more higher education institutions and recognised officially in the countries where the degree-awarding institutions are located



Network composition:

- At least **3 beneficiaries from different MS/AC** entitled to **award doctoral degrees**. Additional beneficiaries or partner organisations from any country, sector and discipline
- Participation of **non-academic sector** essential



Requirements:

- Mandatory enrolment of ESRs in the **joint doctoral programme**
- Mandatory provision of **joint, double or multiple degrees** (letters of institutional commitment signed by a legal representative needed in the proposal)



Typical set-up:

- 48-month projects
- Coherent **joint doctoral programme**
- New or embedded in an existing doctoral programme



Recruitments and Secondments:

- Maximum **540 researcher-months** per network
- Each recruited ESR must be:
 - selected, supervised, monitored and assessed through a joint governance structure
 - Be enrolled on a joint doctoral programme
 - Secondments up to 30% of their recruitment period
- ESR appointments from 3-**36** months, recruitment strategy up to the consortium, depending on the institutions requirements
- Recruitment options as in EID (one or more beneficiaries recruit)

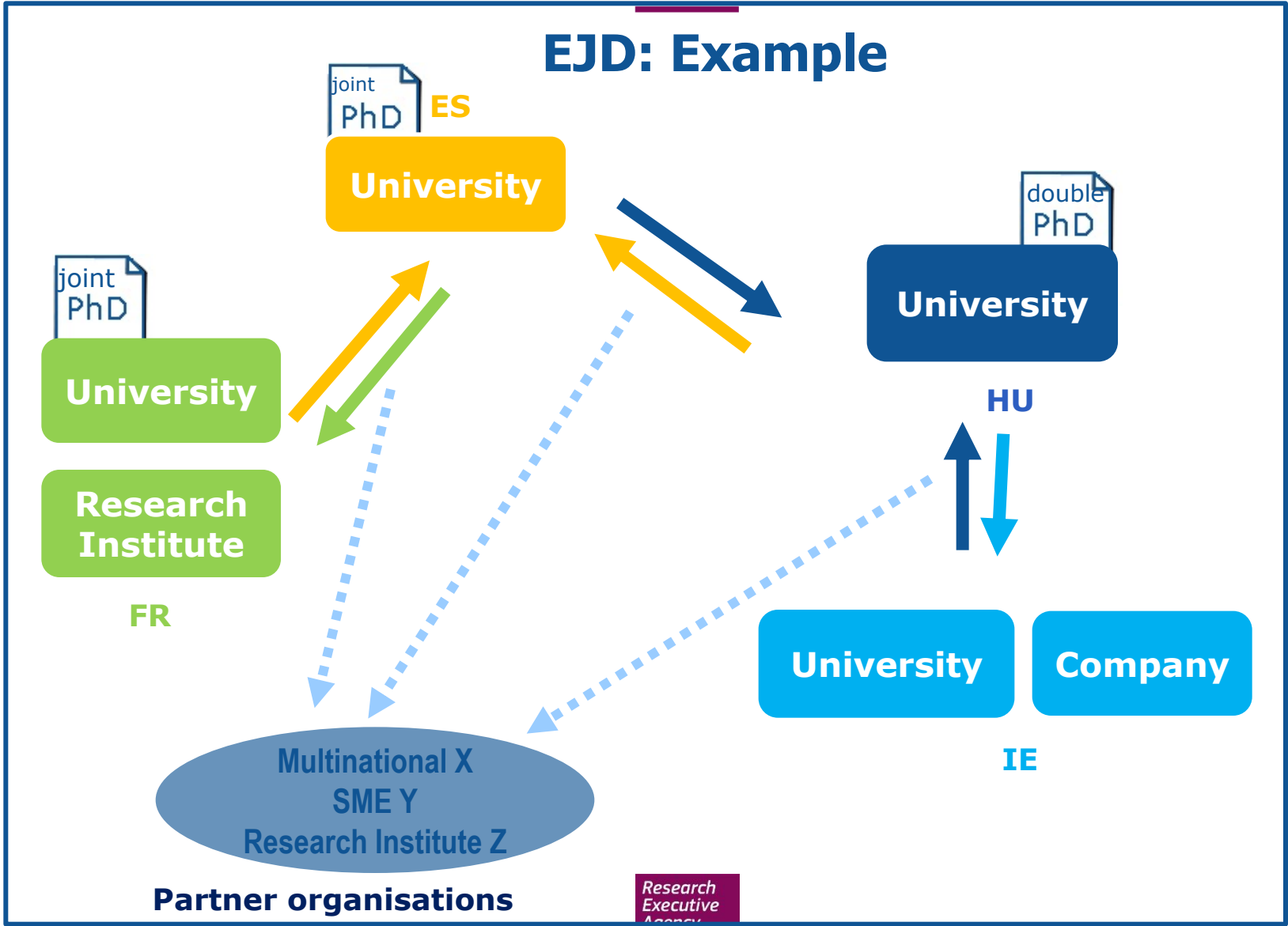


EJD

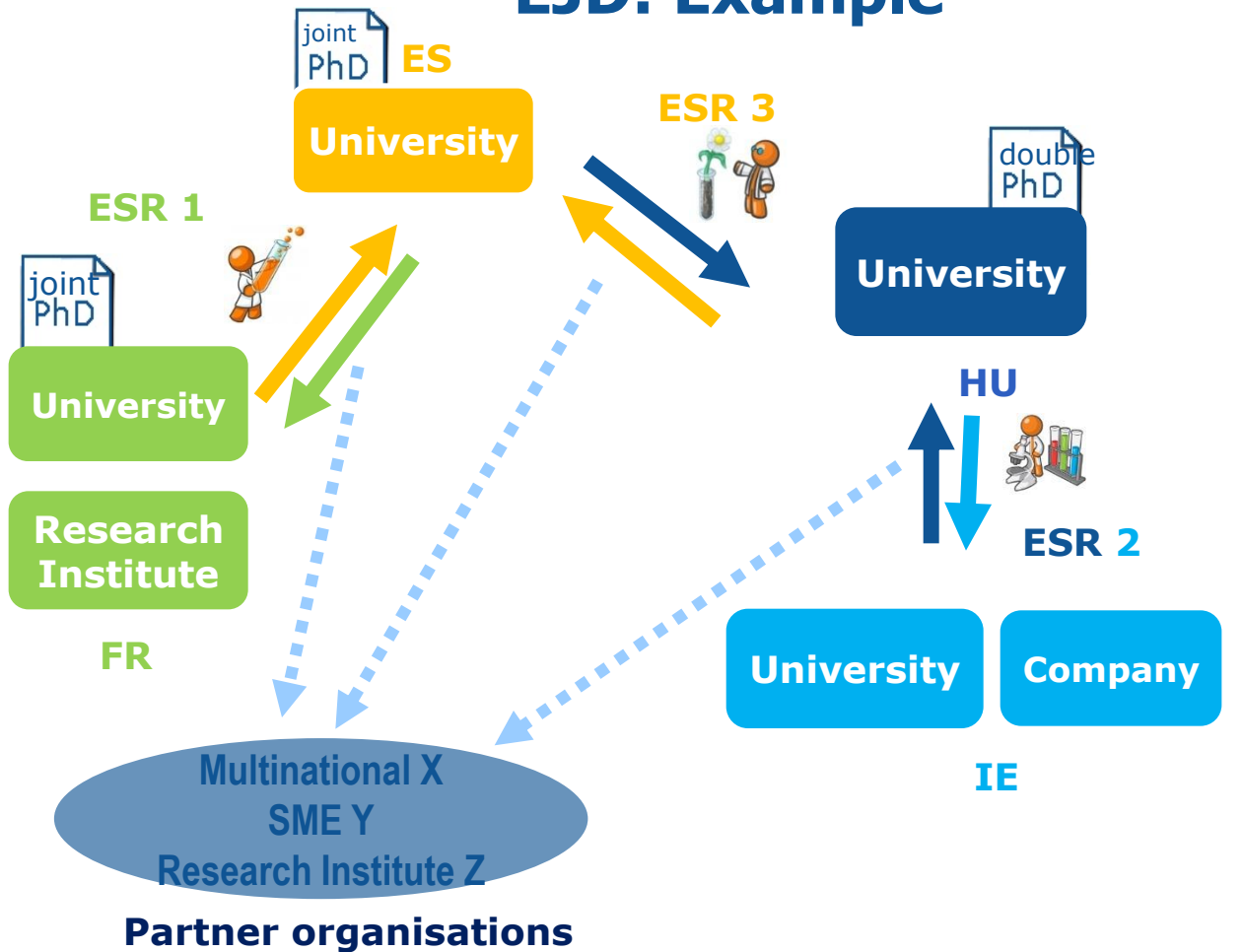


- Limited to 540 researcher-months
- Maximum 40% budget to one country
- EJDs ranked in a separate panel (budget of €30 million)

EJD: Example



EJD: Example



ESR 1 recruited by Research Institute FR (joint doctoral degree by University FR and University ES):

21 months at Research Institute FR (3-month secondment at X)
15 months at University ES (3-month secondment at Y)

ESR 2 recruited by University HU and Company IE (double degree by University HU and University IE):

18 months at University HU (3-month secondment at Y)
18 months at Company IE (following also doctoral programme given by University IE; 3-month secondment at Z)

ESR 3 recruited by University ES (joint degree by University ES and University HU):

24 months at University ES (3-month secondment at X)
12 months at University HU



European
Commission



Evaluation Criteria

Research
Executive
Agency

ITN - Marie Skłodowska-Curie Innovative Training Networks

Excellence

Impact

Implementation

50%

30%

20%

Weighting

1

2

3

Priority in case of *ex aequo*

NB: An overall threshold of 70% will be applied to the total weighted score.



- Some elements of each evaluation criterion are specific to EID and/or EJD
- Applicants should follow the template given in part B (required sub-headings)
- Proposals selected for funding converted into Annex I/description of work

Evaluation Criterion 1: EXCELLENCE

- **Quality, innovative aspects and credibility of the research programme** (including inter/multidisciplinary and intersectoral aspects)
- **Quality and innovative aspects of the training programme** (including transferable skills, inter/multidisciplinary and intersectoral aspects)
- **Quality of the supervision** (including mandatory joint supervision for EID and EJD projects)

Evaluation Criterion 2: IMPACT

- **Enhancing research- and innovation-related human resources, skills, and working conditions to realise the potential of individuals and to provide new career perspectives**
- **Contribution to structuring doctoral/early-stage research training at the European level and to strengthening European innovation capacity, including the potential for:**
 - a) meaningful contribution of the non-academic sector to the doctoral/research training, as appropriate to the implementation mode and research field
 - b) developing sustainable joint doctoral degree structures (for EJD projects only)
- **Effectiveness of the proposed measures for communication and dissemination of results**

Evaluation Criterion 3: IMPLEMENTATION

- **Overall coherence and effectiveness of the work plan**, including appropriateness of the allocation of tasks and resources (including awarding of the doctoral degrees for EID and EJD projects)
- **Appropriateness of the management structures and procedures**, including quality management and risk management (with a mandatory joint governing structure for EID and EJD projects)
- **Appropriateness of the infrastructure of the participating organisations**
- **Competences, experience and complementarity of the participating organisations and their commitment to the programme**

In addition to these evaluation criteria:

Operational capacity of the hosts will be assessed by evaluators

Table on **data for non-academic beneficiaries** (1st page of part B proposal) and Table on **capacity of the participating organisations** (section 5 of part B proposal) must be complete!

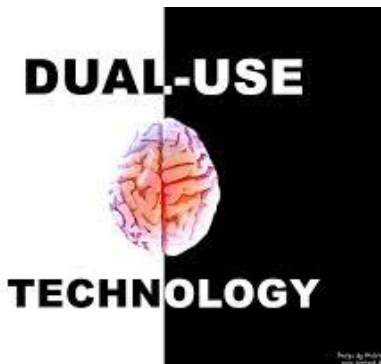
Each host institution must have **appropriate premises to host researchers** (not just access to equipment), as well as **appropriate staff resources to supervise/train researchers**.



European Commission



Ethics Issues



- **Research ethics** is crucial for **all scientific domains** (not only in Life Sciences).
 - ✓ Informed consent or data protection as important for a sociological study as for clinical research!
 - ✓ Dual use issues often in Physics or Engineering proposals.
 - ✓ Environmental damage also considered as ethical issues
- All proposals considered for funding will be submitted to an **Ethics Review**.

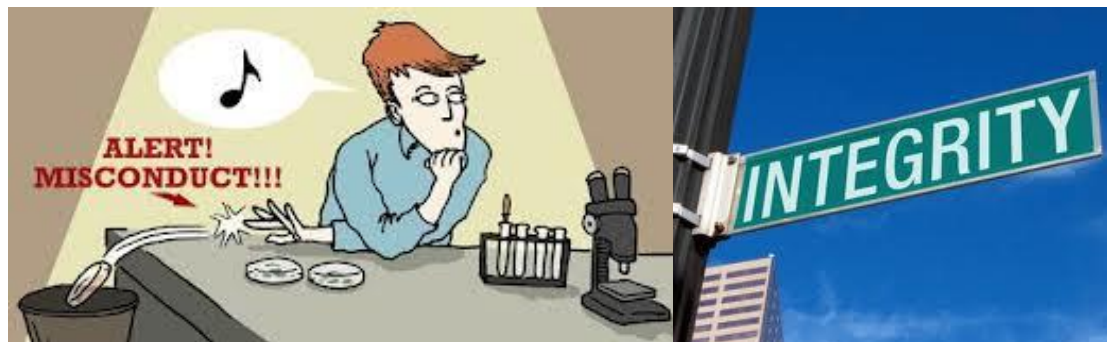
- Each applicant is responsible for:
 - ✓ identifying any potential ethical issues
 - ✓ handling ethical aspects of their proposal
 - ✓ detailing how they plan to address them in sufficient detail already at the proposal stage.

- The Ethics part of each proposal (part A in SEP, part B section 6) must be **as complete as possible** including description of issues and arrangements!



Scientific Integrity

- All applicants are expected to uphold the highest standards of scientific integrity in their proposals
- Any inter-relationship between different participating institutions or individuals must be declared and justified in the proposal





European
Commission

Financing



Research
Executive
Agency

Funding mechanism

Funding mechanism

- Fully based on unit costs
- Unit cost is a pre-calculated cost for the implementation of the action
- Amounts in EURO per unit cost
- Total = unit costs* x number of units

**1 unit
=
1 month of
eligible ESR**

Advantage when applying

- Automated calculation of budget when computing ESR months in your proposal part A

*defined in the Work Programme

Costs categories

1 unit
=
1 month of
eligible ESR

Researcher			Institution	
<u>Living allowance*</u>	Mobility allowance	Family allowance	Research, training and networking costs	Management and indirect costs
<u>3.110</u>	600	500	1.800	1.200

- Country correction coefficient applies to the living allowance
- Researcher Allowances include employer contributions
- Researcher Allowances are a minimum to be paid (top-ups from other sources permitted)

Budget

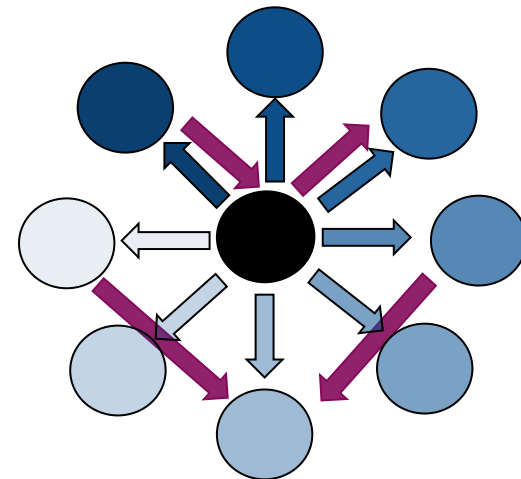
Applying for a proposal

- Max. 40% of EU contribution to the project allocated to one country (ETN+EJD only)

Implementing your project

- Institutional costs can be redistributed:
 - Between partners
 - Provisions covered in **consortium agreement**

3rd parties and subcontracts not applicable





European
Commission



Tricks and tips

Research
Executive
Agency

Drafting a proposal

Basics

- WP "2014" and Guide for Applicants
- Meet the minimum eligibility requirements for the mode
- Consider all evaluation criteria
- Follow the template' guidance and format
- Respect PAGE LIMITS
- Consistency Part A and Part B (# fellows-months, #partners)
 - Check part B formatting before submission
- Consortium arrangements recommended (note: in EID agreement mandatory)



Marie Skłodowska-Curie ITN

Participants

- Clear evidence of partner' organisations commitment
- Capacity of the participant to be clearly demonstrated
- For EJD, letter of committment to award joint degrees



Project

- Involvement of non-academic sector
- Pay attention to mandatory requirements of particular modes
- Compliance with ethical principles
- Resubmission (year and acronym) – 2 previous years of FP7 (2012&2013)



6 Tips for success



- Make it easy for the evaluators to find the information in the proposal!!!
- Structure and organize the information well
- Be precise, less is sometime more...
- Start writing the proposal
- Avoid last minute submission
- Impartial view...ask your colleagues to read it before...



Thank you

Research
Executive
Agency

