

www.eera-set.eu

Etat des lieux de l'implication française au sein des Programmes d'EERA

Françoise TOUBOUL

30 novembre 2018
Ancre/EERA - MESRI



EERA en quelques mots

Créée en 2008 pour accélérer le développement des technologies bas carbone pour l'énergie, associant le nucléaire et les énergies renouvelables.

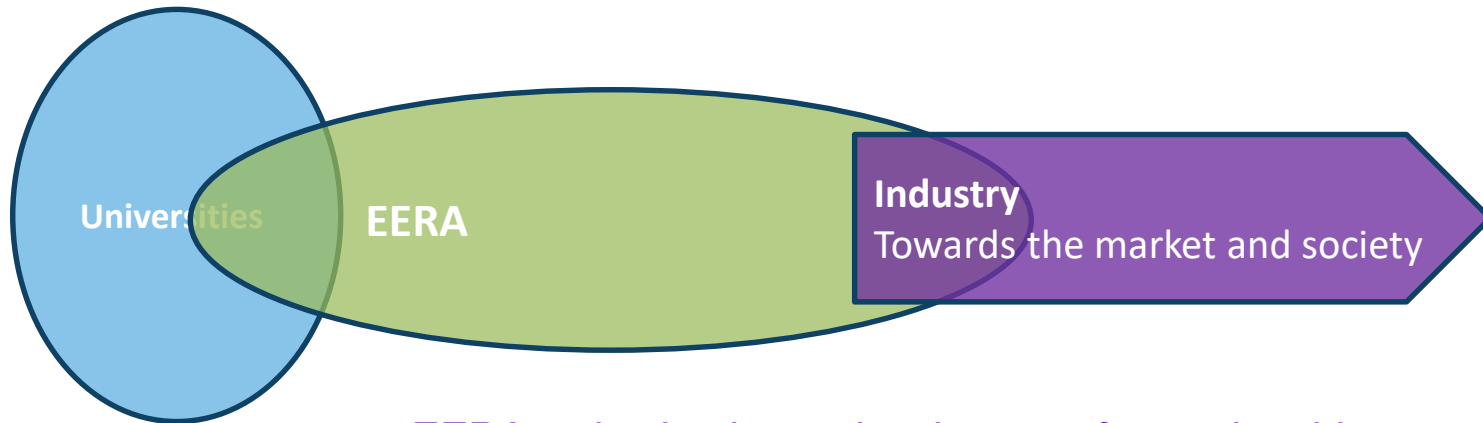
- The key actor in European Energy Research inside the SET-Plan
- Bringing together more than **175 research organizations and universities**
- Covering **23 EU Member States**
+ Norway, Switzerland, Iceland and Turkey
- Organized in **16 (+1) Joint Programmes** covering research in materials, technologies, systems and including policy and social aspects.
- A track record of 90% participation in FP7 projects in energy (311 M€)
- Collaborating with **European industry** through *Technology and Innovation Platforms*
- International visibility through a MoU with **OECD/NEA**
- Promoting **national research alliances** with a track record of 7 national alliances (*ANCRE, ALINNE, BERA, NERA, etc....*)



Position de l'EERA dans la chaîne de l'innovation

couvre toute la chaîne de l'innovation, avec un focus sur TRL 2-5

*Early industry involvement in **Joint programmes** to provide market relevant guidance and feedback*



EERA active business development for marketable research results

| TRL | 1 | 2 | 3 | 4 | 5 | 6 | 7 | 8 | 9 |
|-----|---------------------------|-------------------------------|-------------------------------|------------------------------|-------------------------------------|---------------------------------------|--|-------------------------------|-------------------------------|
| | Basic principles observed | Technology concept formulated | Experimental proof of concept | Technology validation in lab | Tech valid. in relevant environment | Demonstration in relevant environment | Demonstration in operational environment | System complete and qualified | Successful mission operations |

* *Technology Readiness Level : niveau de maturité technologique*

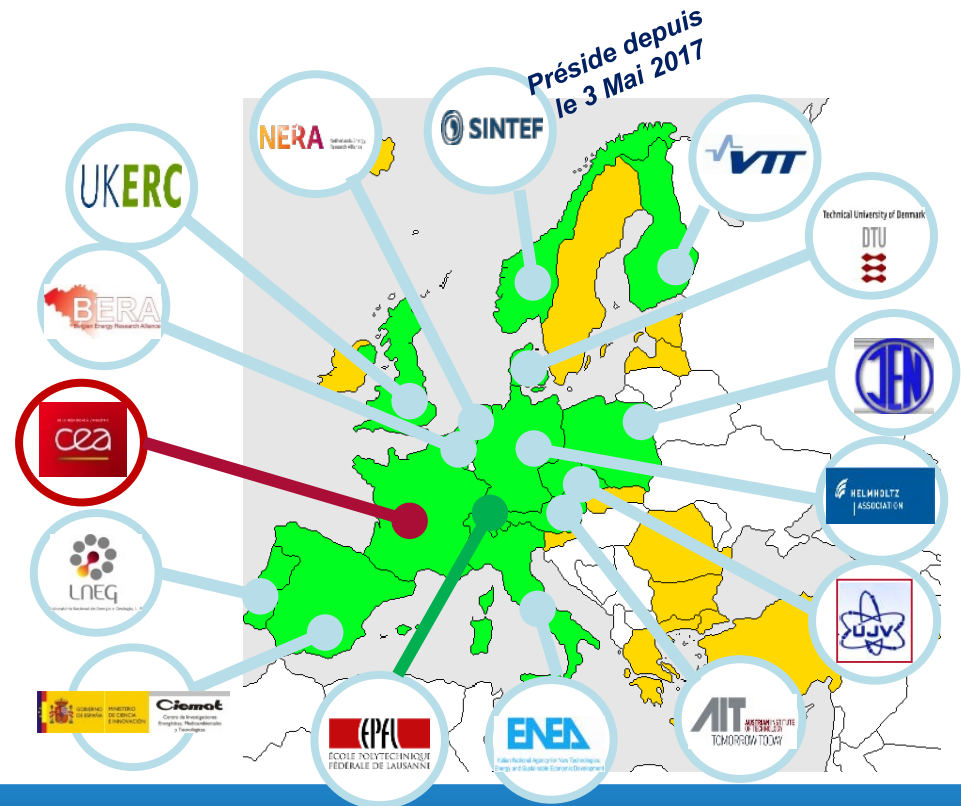
Gouvernance de l'EERA

- Un comité exécutif réduit, de 15 membres pour une prise de décisions optimale
- Une nouvelle présidence en 2017 (Nils Rokke, *SINTEF* ; Oliver Kraft, *KIT*)
- Un secrétaire général et un secrétariat à Bruxelles
- 16 (+1) *Joint Programmes* pour mener les activités de recherche et de coordination

- La France, via le CEA, est présente dans tous les organes de décision



Conférence Scientifique EERA 2016



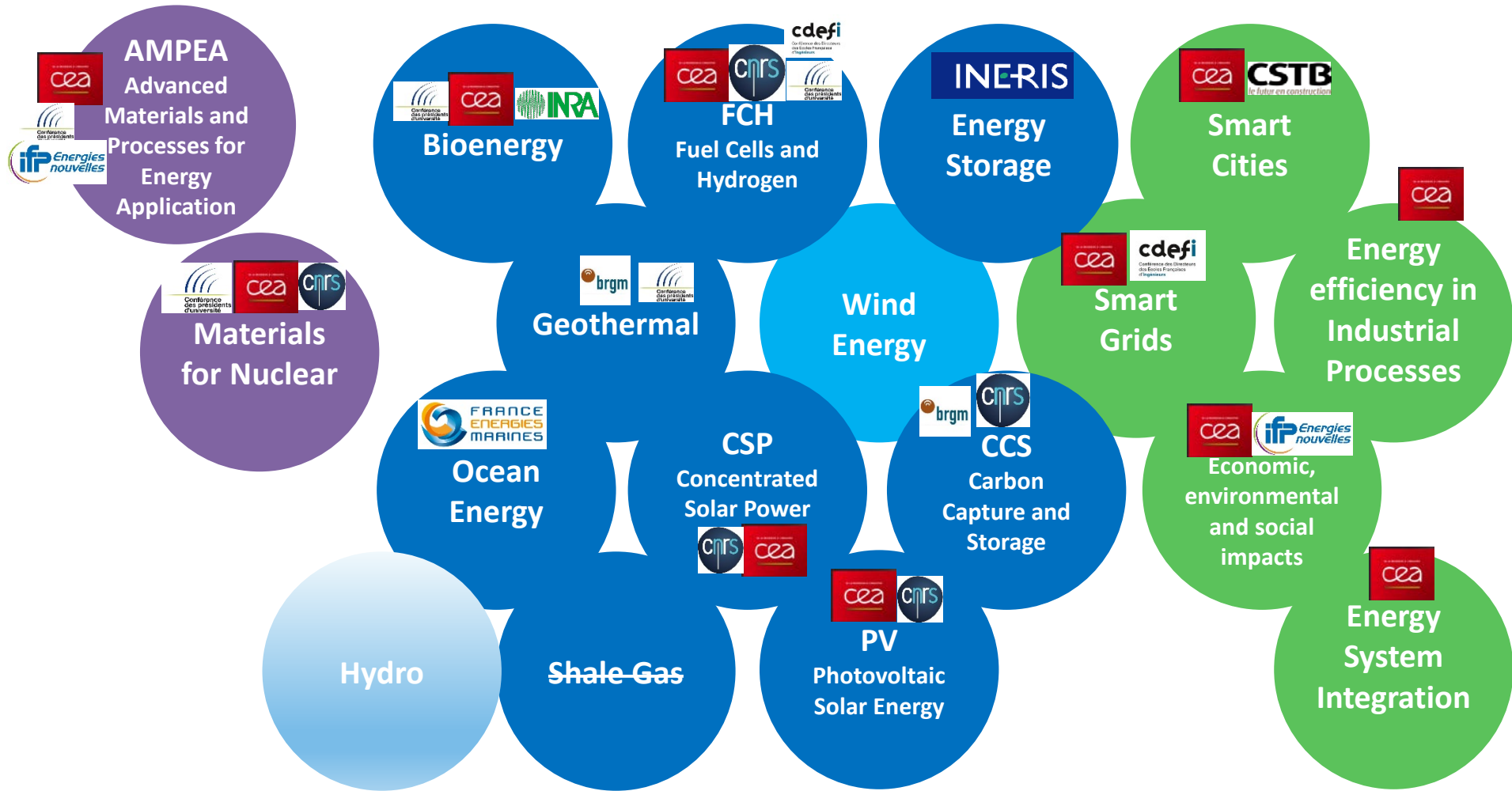
EERA Joint Programme technology portfolio

- supporting the SET Plan -

MATERIALS

TECHNOLOGIES

SYSTEMS



| | |
|--------------------------------|---|
| Membres fondateurs | CEA, CNRS, CPU, IFPEN |
| Membres associés | Andra, BRGM, CDEFI, Cirad, CSTB, Ifremer, Ifsttar, Ineris, Inra, Inria, IRD, IRSN, Irstea, LNE, Onera |
| Partenaires industriels | Pôles de compétitivité couvrant tout ou partie des thèmes de l'ANCRE |

10 groupes programmatiques

- GP1 – Énergies issues de la biomasse
- GP2 – Énergies fossiles, géothermie, métaux critiques
- GP3 – Énergies nucléaires
- GP4 – Énergies solaires
- GP5 – Énergies marines, hydrauliques et éoliennes
- GP6 – Transports
- GP7 – Bâtiment
- GP8 – Industries et agriculture
- GP9 – Prospective et économie de l'énergie
- GP10 – Réseaux d'énergies et stockages associés

2 groupes transverses

- GT – Stratégie
- GT – Europe et international

Plus-value de l'EERA sur le plan politique

■ Contribution à l'*Integrated Roadmap du Set-Plan*

■ contribution:

- *Position paper* mid-term review H2020
- *Position paper* sur les besoins de R&D sur les matériaux « haute température »
- Plan d'implémentation du Set-Plan

SET Plan 10 Key Actions:

Communication published in September 2015

2016 - **Setting R&I targets:** agreed through
'Declarations of Intent' → **led by the EC**

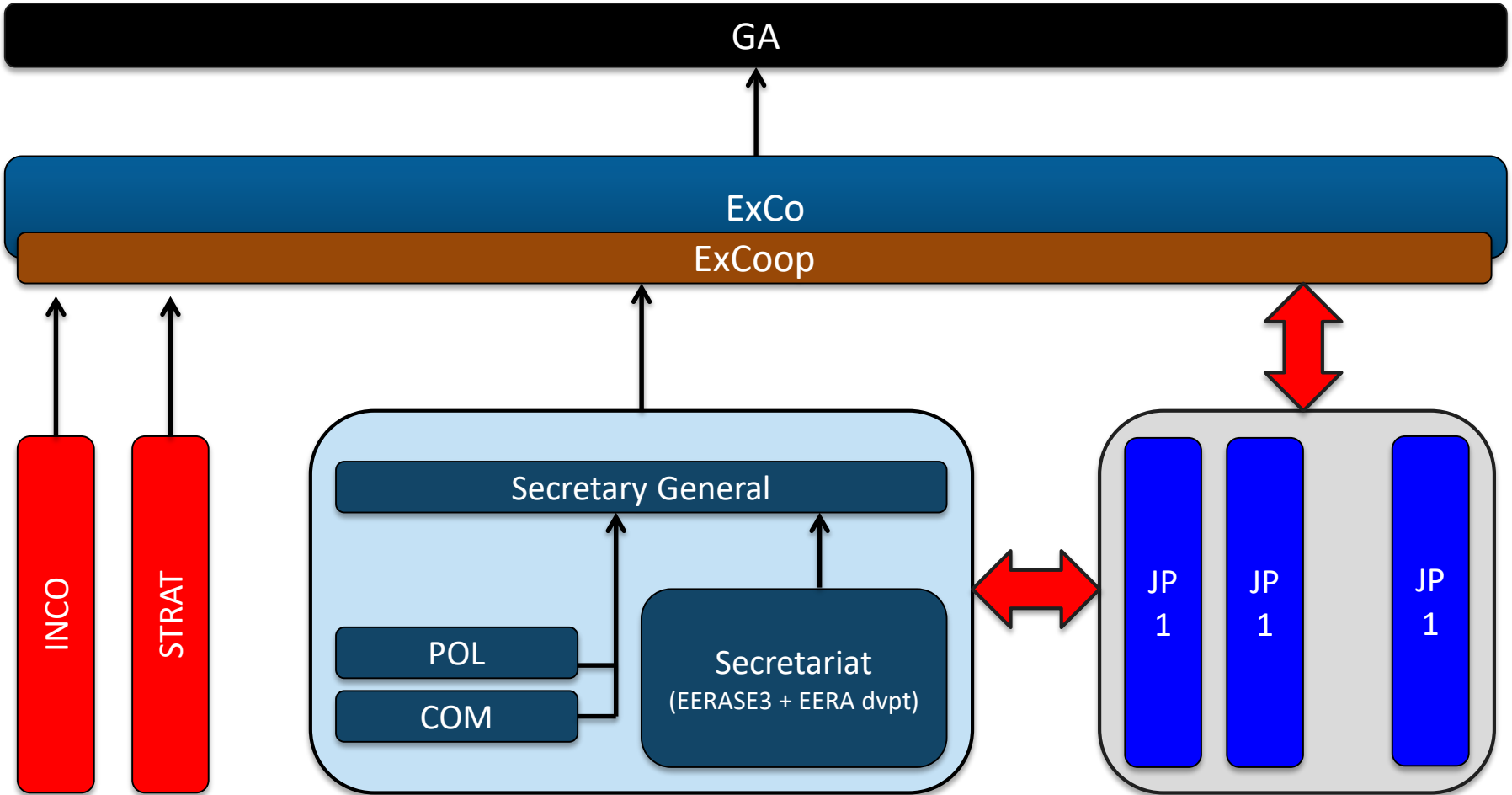
Set-up of 15 Temporary Working Groups
to prepare *Implementation Plans* → **led by Countries and Industry**

Implementation Plans: to select R&I Activities
to be implemented mainly at national level, foster
joint actions among countries & identify National Flagships

■ En cours:

- FET Flagship proposals for "*Radically new Energy Production, Conversion and Storage devices and systems*"

EERA Global Governance



French organisation for EERA

- CEA as French representative
- F. Touboul, CEA DDD (Sustainable Development Dir), ExCo and ExCoop member
- B. Bouchet, CEA DAE (European Affairs Dir), PR (Personal Representative), ExCoop alternate representative
- 1 CEA VIE* in EERA secretariat

* *International volunteering in business*

The Executive Committee Operative Team

A. Definition

- A group of 6 ExCo members comprising the Chair, the Vice-Chair and 4 designated members, delegated by the ExCo to take a more active role in the management of EERA.

B. Role & Responsibilities

- Meets (in most cases virtually, or physically) monthly with the Secretary General & with invited members of the SEC, or from JP's, or external guests.
- **Provides guidance**, upon request of the Secretary General, or whenever required, to the orientations of the Alliance on any matters such as, but not limited to interactions with the EC, follow up of the TWG's, interaction with the JP's, review of Working Groups (WG's) or Task Forces (TF's) progress, etc.
- Acts as high-level sounding/review board upon request of the Secretary General, for any matter not subject to formal ExCo approval.
- Takes **Provisional Decisions** on behalf of the ExCo, upon request of the Secretary General.
- Convocation of the ExCoop is done by the Chair or Vice-Chair. Agenda and supporting documents must be available 5 working days before the ExCoop meeting.

- Nils Røkke, *SINTEF, Norvège*
- Oliver Kraft, *KIT, Allemagne*
- Françoise Touboul, *CEA, France*
- Patrick Hendrick, *ULB, Belgique*
- Paul Korting, *ECN, Pays bas*
- Theresa Ponce, *LNEG, Portugal*

→ **monthly webex meeting**

ANCRE/EERA

- Monthly report from ExCoop and ExCo to ANCRE Comcord (F. Touboul)
- EERA activities monitoring is part of the activities of ANCRE GT Europe (A. Rondaud)
- Many ANCRE researchers are members of EERA JPs And/or ANCRE GPs