



# General information

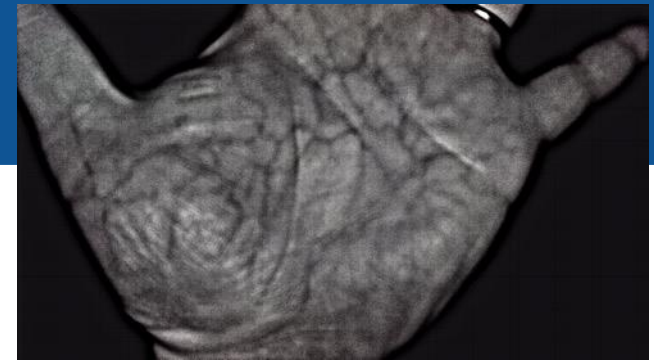
## **Veintree SAS**

*Authentication without identification  
Vein enhanced face identification*

**Christelle Taillardat, CEO**  
**[christelle.taillardat@veintree.eu](mailto:christelle.taillardat@veintree.eu)**  
**+33 (0)6 61 64 53 60**

## **Targeted topics**

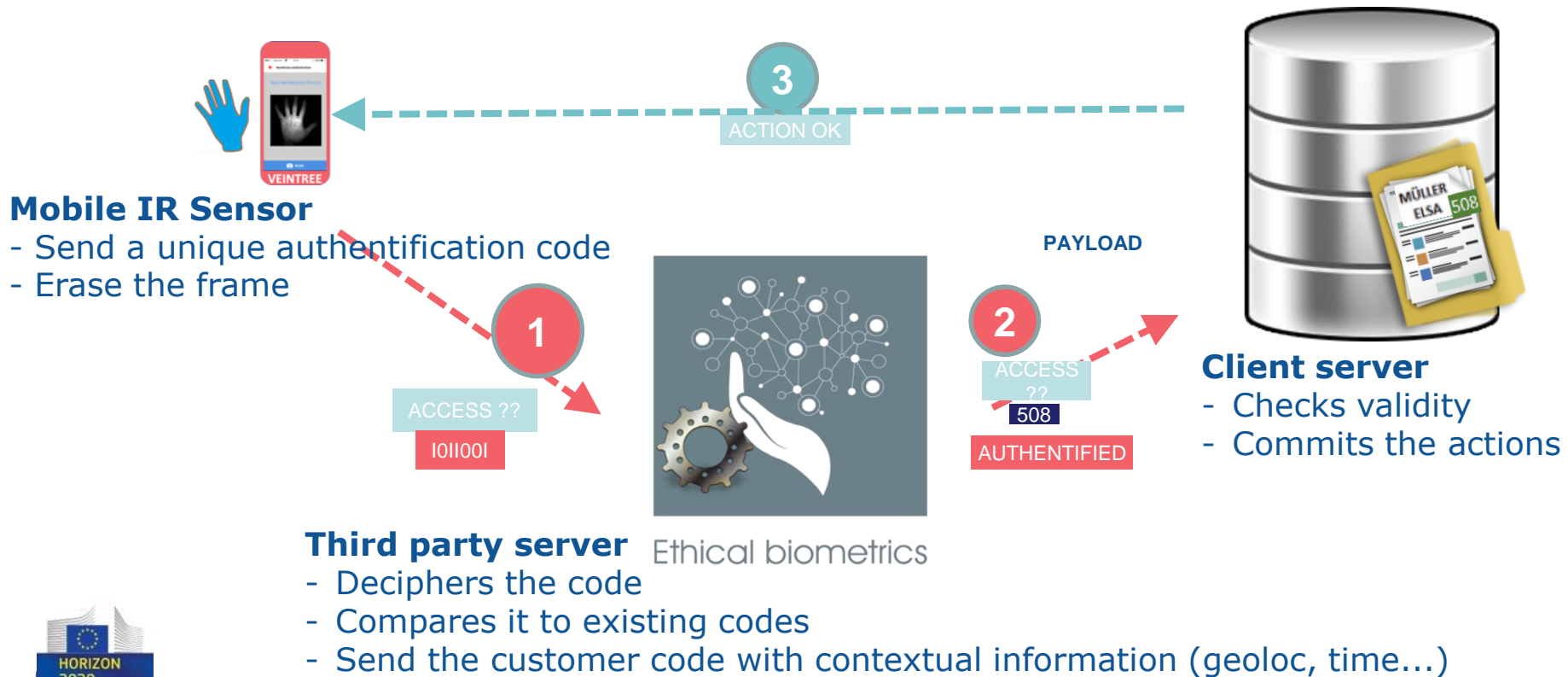
SU-INFRA01-2018-2019-2020	Prevention, detection, response and mitigation of combined physical and cyber threats to critical infrastructure	IA
SU-DRS02-2018-2019-2020	Technologies for first responders - sub-topic 1: Victim detection technologies	RIA
SU-BES02-2018-2019-2020	Technologies to enhance border and external security - sub-topic 2: Detecting fraud, verifying document validity, and alternative technologies to identifying people	RIA



# Competencies

## *Palm Vein Biometrics solution*

The (coded) mapping of our palm vein network is unique and can serve as an authentication solution





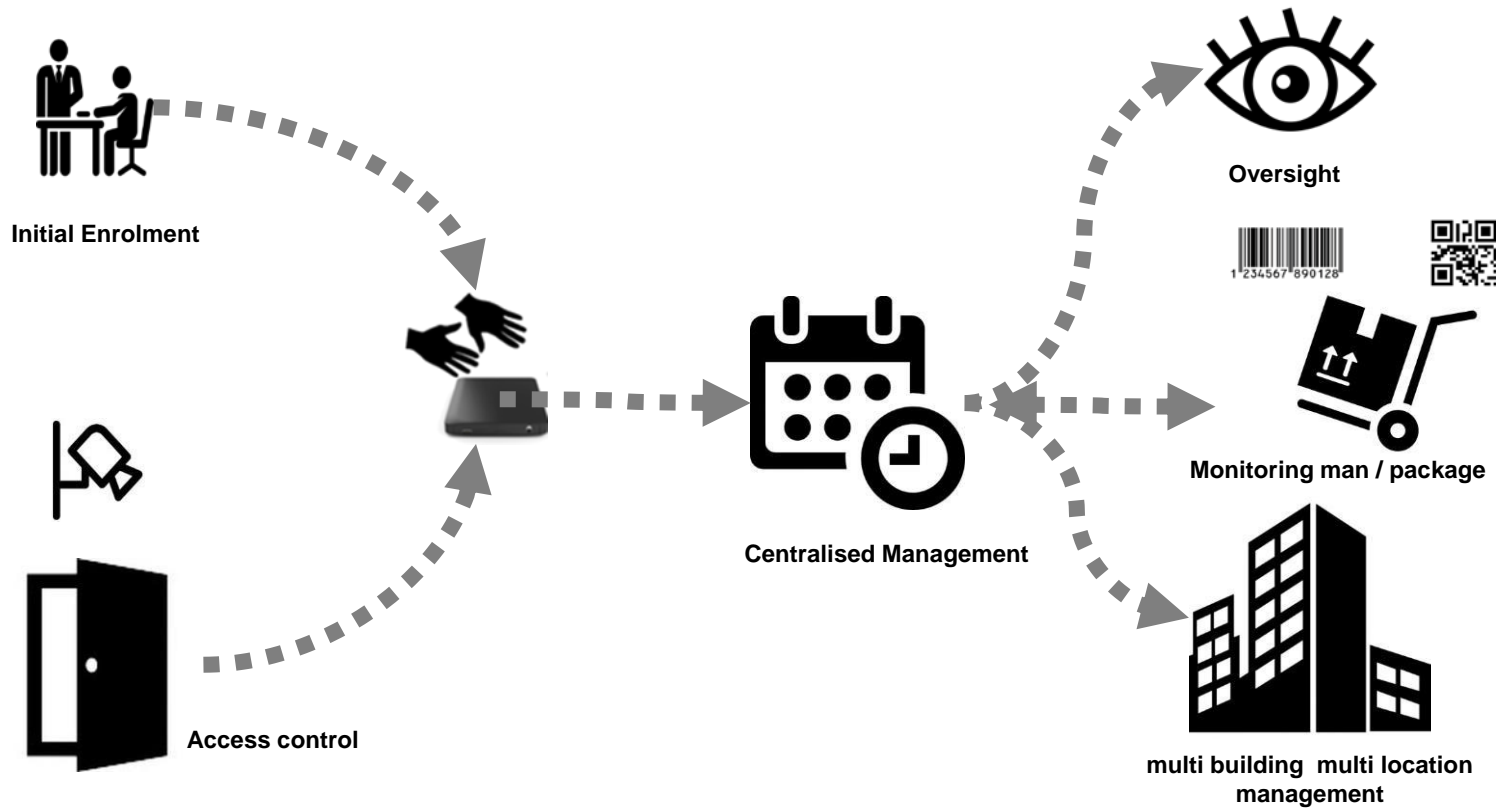
# Disaster Management



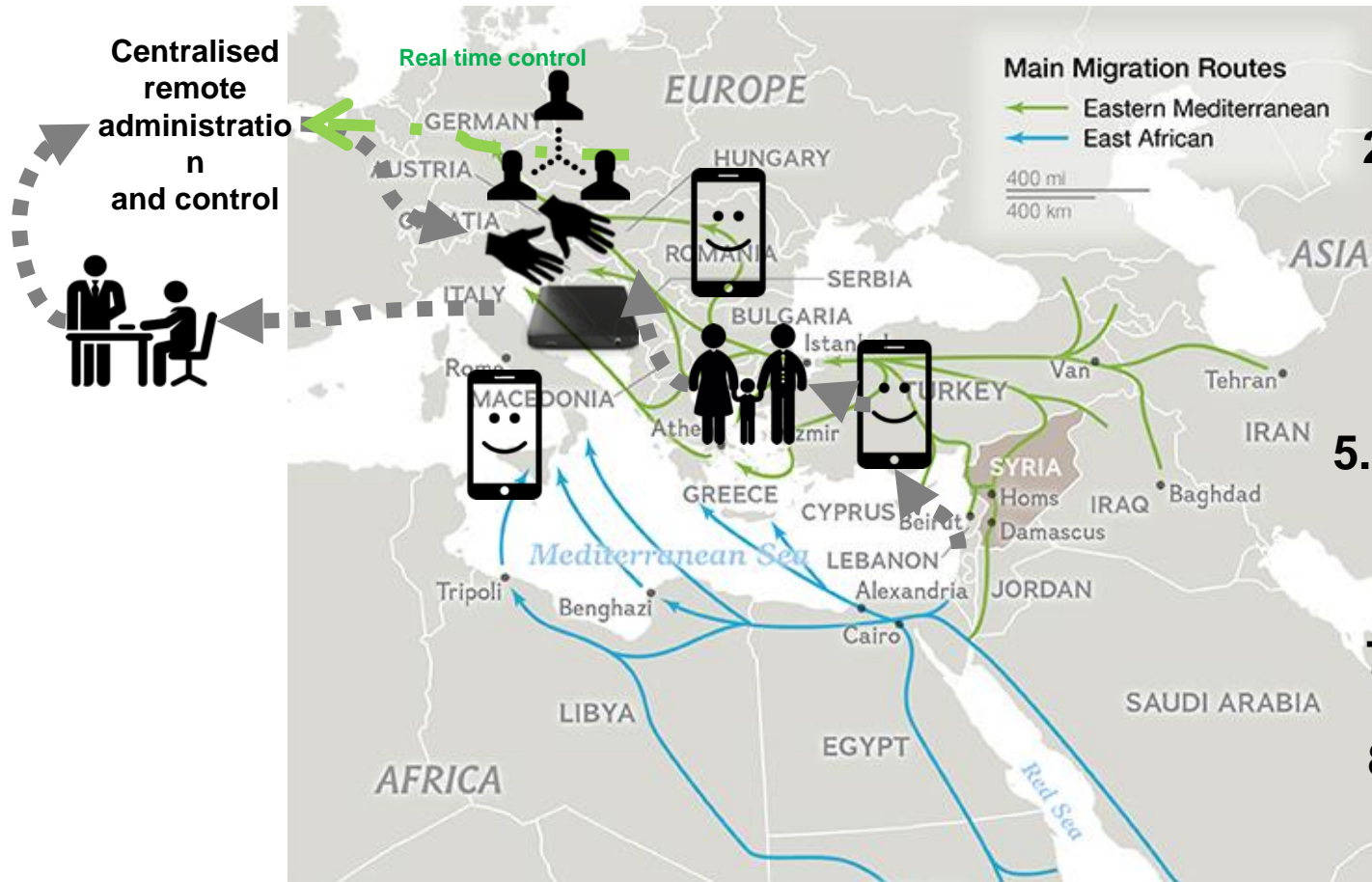
ACE782A89B56C452E  
788F904AB56788CD9  
864E56EF7AC1



## Logistics and Security



## International Migration Follow up



1.- Portable

2.- Connected

3.- Accurate

4.- Unfalsifiable

5.- Non discrimina

6.- Ethic

7.- Real time

8.- Simple