

H2020-MSCA-ITN-2020

Innovative Training Networks



14/10/2019

MSCA ITN INFO SESSION

1. Policy

Horizon 2020
Marie Skłodowska
Curie Actions (MSCA)

2. ITN Specificities

Participants
Recruitment
Budget

3. Application

Participant Portal
ITN proposal
Euraxess

4. Next ITN call



H2020: World class Science & Enabling Innovation - 80 billion EUR



Marie Skłodowska-Curie Actions



**Innovative
Training
Networks**



**Individual
fellowships**



**Research and
Innovation Staff
Exchanges**



**Cofunding of
research
programmes**

ITN excellence in training



Countries

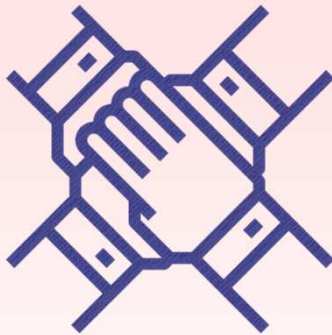


Sectors



Disciplines

ITN Objectives



**Collaborations
international &
intersectoral**



**ESRs
Transnational
mobility**



**R&I activities
Doctoral
programme**

ITN in practice

3 modes

ETN

European
Training
Networks

*Participants implement
a joint research programme*

~445 M€

EID

European
Industrial
Doctorates

*Doctoral training with the
non-academic sector*

~40 M€

EJD

European
Joint
Doctorates

*Doctoral programme to
deliver joint degrees*

~45 M€

ITN in practice



Who

Minimum 3 independent organisations from 3 different MS/AC countries
Early-Stage Researchers (**ESRs**)

What

R&I activities, training, supervision

How

Recruitment: 3 to 36 months

How long

Up to 4 years

How much

Max. 540 person month (unit cost)

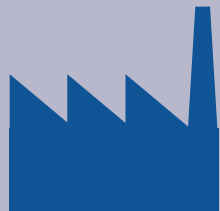


Who applies



Academic sector

- ✓ public /private higher education establishments awarding academic degrees
- ✓ public /private non-profit research organisations whose primary mission is to pursue research
- ✓ international European interest organisations (e.g. CERN, EMBL)



Non-academic sector

- ✓ any entity not included in the academic sector:
- ✓ e.g. large companies, SMEs, NGOs, museums, hospitals
- ✓ international organisations (e.g. UN, WHO)

Eligibility rules?

EU 28 Member States (MS)
Associated Countries (AC)
Third Countries (TC)

ETN

**Min. 3 beneficiaries from any sector
from 3 different MS/AC1**

EID

**Min. 2 beneficiaries from 2 different
MS/AC:
min. 1 from academic
+ min. 1 from non-academic sector**

EJD

**Min. 3 beneficiaries
from academic sector awarding PhD
from 3 different MS/AC**

Above this minimum: participants from any sector / country

ITN Consortium Participants

Beneficiary	Partner Organisation
In Member State (MS) or H2020 Associated Country (AC)	+ In Third Country (TC)
Recruit researchers	Do NOT recruit researchers
Trains/hosts seconded researchers	
Sign Grant	Do NOT sign Grant
Claim costs	Do NOT Claim costs
Overall implementation	Letter of Commitment required



Early-Stage Researchers

Only Early-Stage Researchers (**ESRs**):

- ≤ 4 years of research experience
- no PhD yet

Mandatory **trans-national mobility** at the time of recruitment.

Recruitment: **3 to 36** months after the project starts

Joint research training programme

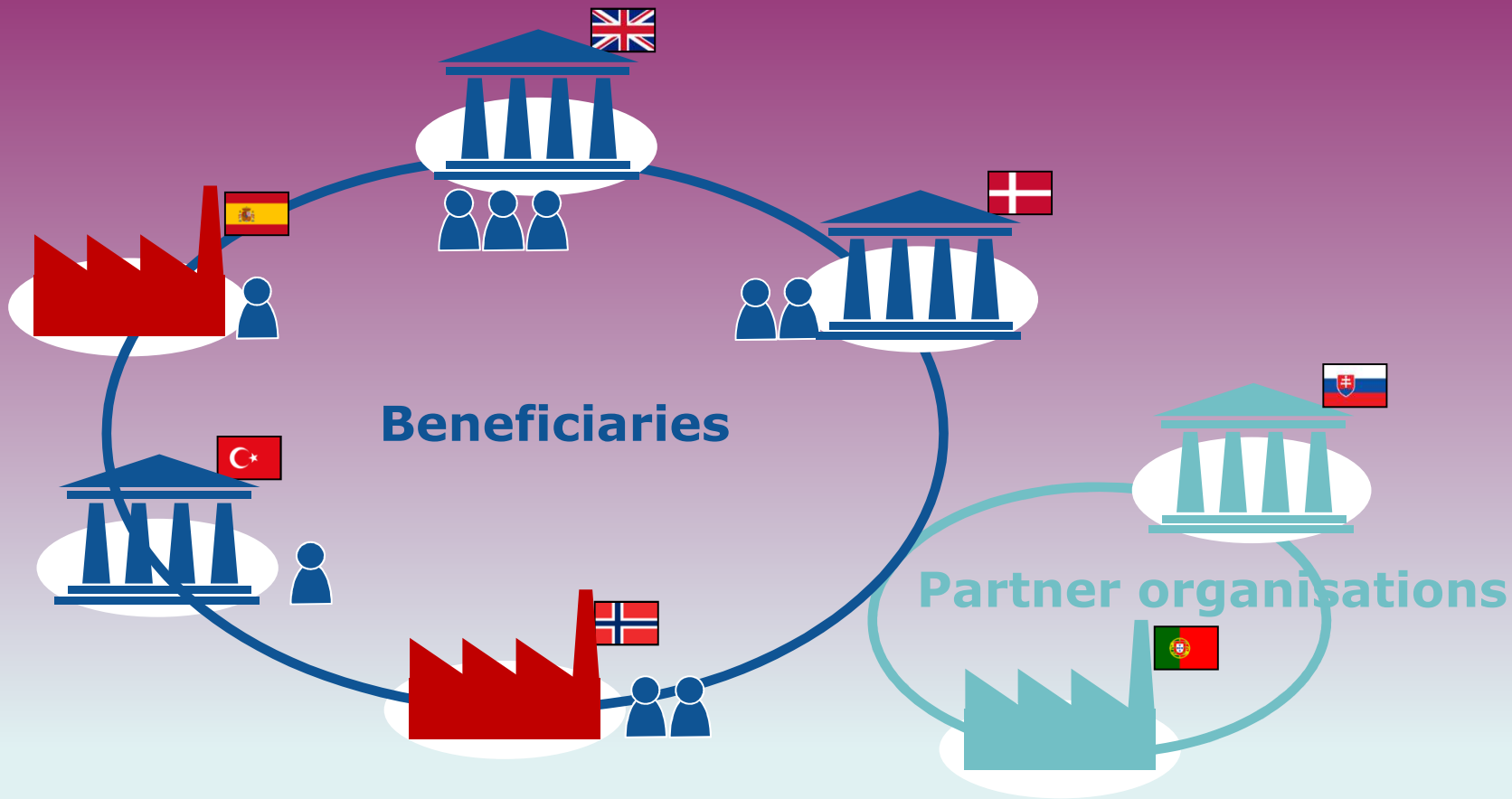
Mandatory

- ✓ **Minimum 3 beneficiaries from 3 different MS/AC**
- ✓ **Each beneficiary recruits and/or hosts at least 1 ESR**
- ✓ **Max 540 person-months (e.g. 15 ESRs x 36 months)**
- ✓ **Max 40% budget to one country**

Other features

- ✓ **Non-academic sector participation essential**
- ✓ **PhD enrolment typically expected (not mandatory)**
- ✓ **Secondments to other countries/sector/disciplines ($\leq 30\%$ time)**
- ✓ **Joint supervision recommended**
- ✓ **Partner organisations (any country/sector)**
- ✓ **Typically 6-10 beneficiaries**

ETN



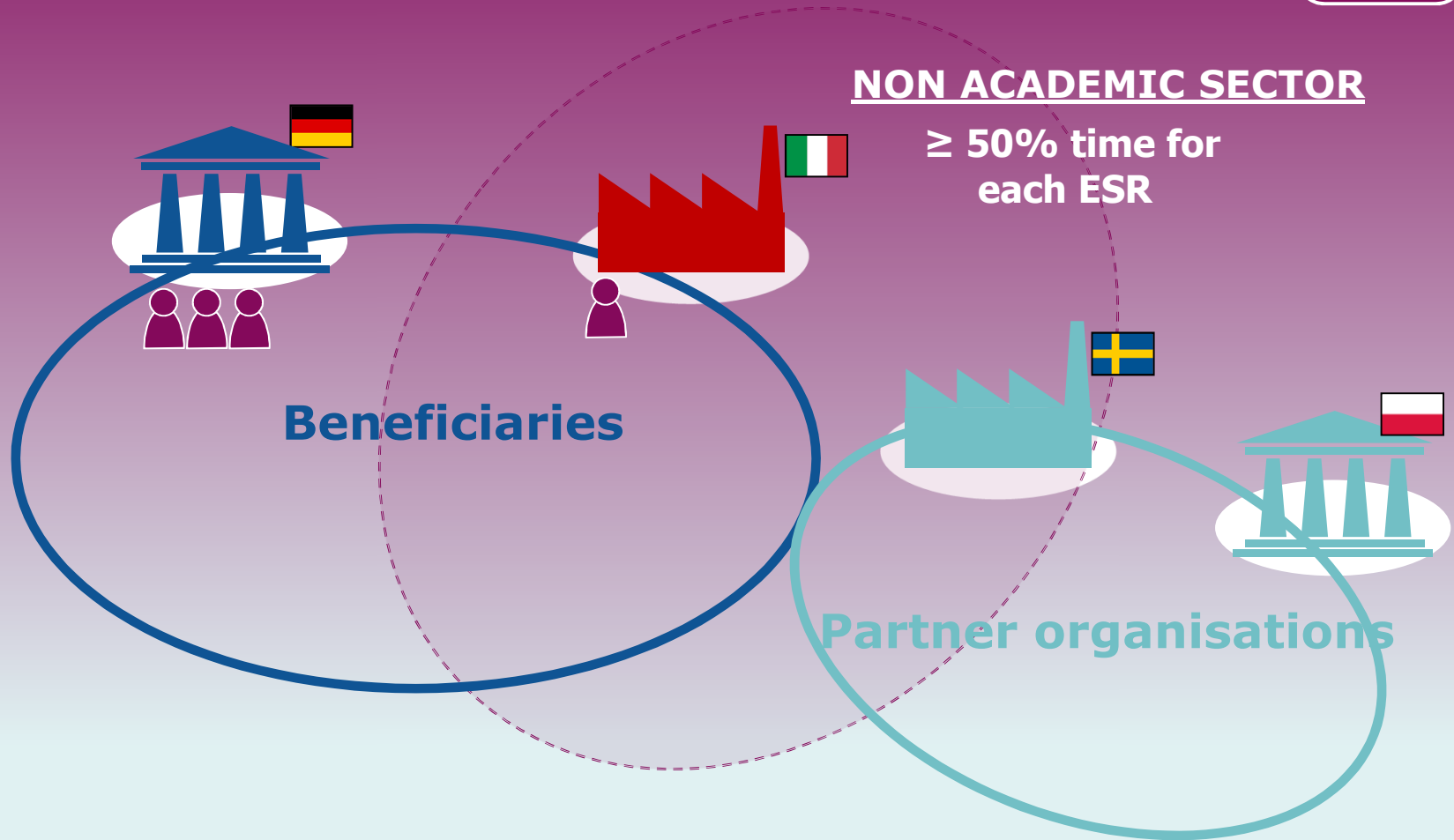
Doctoral training with the non-academic sector

Mandatory

- ✓ **Minimum 2 beneficiaries from 2 different MS/AC**
1 academic + 1 non-academic
- ✓ **If: 2 organisations = Max 180 person-months**
If: ≥ 3 organisations = Max 540 person-months
- ✓ **Each ESR enrolled in a PhD**
- ✓ **Each ESR spends $\geq 50\%$ time in non-academic sector**
- ✓ **Joint selection, training and supervision (1 supervisor/sector)**
- ✓ **Intersectoral secondments are international between beneficiaries**

Other features

- ✓ **Individual research projects under the topic of the doctoral programme**
- ✓ **Partner organisations (any country/sector)**
- ✓ **Flexible recruitment rule**



2 beneficiaries: max 180 PM

≥3 beneficiaries: max 540 PM

Universities cooperating to deliver joint multiple doctoral degrees

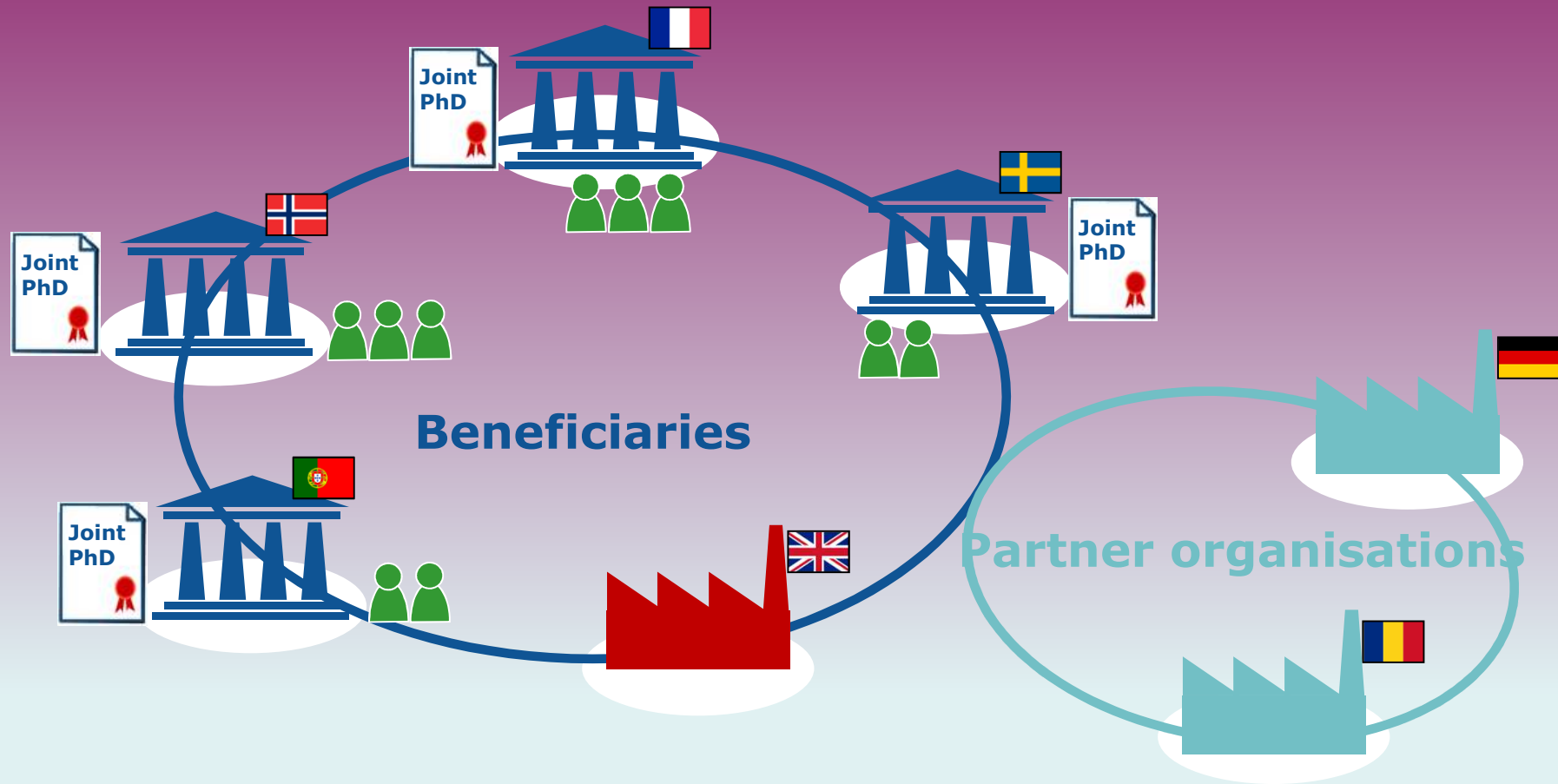
Mandatory

- ✓ **Minimum 3 beneficiaries from 3 different MS/AC**
- ✓ **Minimum 3 beneficiaries entitled to award doctoral degree, of which at least 2 established in a MS/AC**
- ✓ **At least 2/3 of the supported ESRs enrolled in a joint/double/multiple doctoral degree awarded by two or more beneficiaries/partner organisations in a MS/AC**
- ✓ **Each ESR enrolled in the joint (international) doctoral programme**
- ✓ **Joint admission, selection, training, supervision, governance**
- ✓ **Commitment to deliver joint/double/multi degrees**
- ✓ **Max 540 person-months (e.g. 15 ESRs x 36 months)**
- ✓ **Letters of institutional commitment from Organisations to deliver PhD degrees are required in the proposal (template)**

Other features

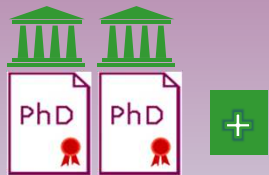
- ✓ **Please refer to Guide for Applicants**







Joint degree: single diploma issued by at least 2 academic institutions located in 2 different countries and recognised officially



Double/multiple degree: 2 or more separate national diplomas issued by two or more higher education institutions located in different countries and recognised officially



Letters of institutional commitment to deliver joint/double doctoral degrees are mandatory in the proposal

Summary

	ETN	EID	EJD
Beneficiaries	≥3 from 3 diff. MS/AC	≥2 from 2 diff. MS/AC: (≥1 academic + ≥1 non-academic)	≥3 (acad. award PhD) from 3 diff. MS/AC
Person-months	Max. 540	Max. 180 / 540	Max. 540
Researchers	ESRs only (3-36 months)		
Partner Organ.	Unlimited (any country / sector / discipline)		
PhD enrolment	typically expected	mandatory	mandatory
Non-academic participation	essential	mandatory	essential
Inter-sectoral exposure	possible through secondments	≥50% in non-academic International (for beneficiaries)	possible through secondments
Panels and rank lists	8 scientific panels (445 M€)	EID panel (40 M€)	EJD panel (45 M€)



Funding mechanism

**1 unit
=
1 month of
eligible ESR**

Unit costs

Unit costs are a pre-estimated cost for the implementation of the action.

Advantage when applying

Automated calculation of budget when computing ESR months in your proposal

EU contribution for ITN recruitments

Researcher			Institution	
Living * allowance	Mobility allowance	Family allowance	Research, training and networking costs	Management and indirect costs
3.270€	600€	500€	1.800€	1.200€

Funding And Tenders portal

Funding & tender opportunities
Single Electronic Data Interchange Area (SEDIA)

English [Register](#) [Login](#)

SEARCH FUNDING & TENDERS HOW TO PARTICIPATE PROJECTS & RESULTS WORK AS AN EXPERT SUPPORT

Horizon 2020 Framework Programme (H2020) clear filter

Type your Keywords

Match whole words only

GRANTS TENDERS

Filter by submission status

FORTHCOMING OPEN CLOSED

Filter by programme (only for grants)

H2020

Filter by programme part
Marie-Sklodowska-Curie Actions

Filter by focus area
Select a Focus area...

Filter by cross-cutting priority
Select a Priority...

Funding and tenders Sort by: opening date title ID deadline

5 results

Download all funding and tender opportunities to your calendar or subscribe to the RSS feed (unfiltered). [Online manual "Find a grant"](#)

See all calls for tenders published by EC

Innovative Training Networks MSCA-ITN-2020

Types of action: European Training Networks Types of action: European Industrial Doctorates Types of action: European Joint Doctorates | Programme: Horizon 2020

[Open for submission](#) Opening date: 12 September 2019 Deadline model: single-stage
Deadline date: 14 January 2020 17:00:00 Brussels time

European Researchers' Night MSCA-NIGHT-2020

Types of action: Coordination and support action | Programme: Horizon 2020

Forthcoming Opening date: 08 October 2019 Deadline model: single-stage
Deadline date: 09 January 2020 17:00:00 Brussels time

Research and Innovation Staff Exchange MSCA-RISE-2020

Types of action: RISE | Programme: Horizon 2020

ITN proposal "anatomy"

Part A

- structured data -

European Commission - Research - Participants
Proposal Submission Forms
Research Executive Agency

Horizon 2020
Sub-programme
Call: H2020-MSCA-ITN
Topic: MSCA-ITN-2015
Action: MSCA-ITN-1
Proposal Number
Proposed start date

new

Section	Title
1	General information
2	Participants & contacts
3	Budget
4	Ethics
5	Call-specific questions

Table of contents

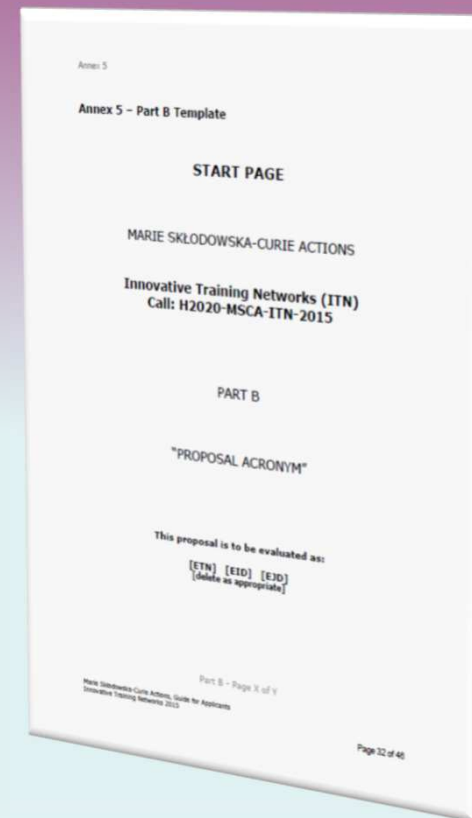
How to fill in the forms?
The administrative forms must be filled in for each proposal using the template. The data fields in the administrative forms are pre-filled based on the previous steps.

Read more

H2020-ITN.pdf - Ver 1.54 20140318 Page 1 of 12 Last saved: 24/05/2014 at: 16:08

Part B

- description of action -



ITN proposal Part A

- **Section 1:** General information (including Abstract)
- **Section 2:** Information on participants
- **Section 3:** Budget and recruitment tables
- **Section 4:** Ethics table

ITN proposal Part B

DOCUMENT 1 (Proposal Number-Acronym-Part B1)

START PAGE (*1 page*)

TABLE OF CONTENTS (*1 page*)

LIST OF PARTICIPATING ORGANISATIONS (max 2 pages)

START PAGE COUNT (MAX 30 PAGES SECTIONS 1-3)

1. **EXCELLENCE** (*starting page 5*)
2. **IMPACT**
3. **QUALITY AND EFFICIENCY OF THE IMPLEMENTATION**

STOP PAGE COUNT (MAX 30 PAGES SECTIONS 1-3)

**30 pages
limit**

DOCUMENT 2 (Proposal Number-Acronym-Part B2)

NO OVERALL PAGE LIMIT APPLIED

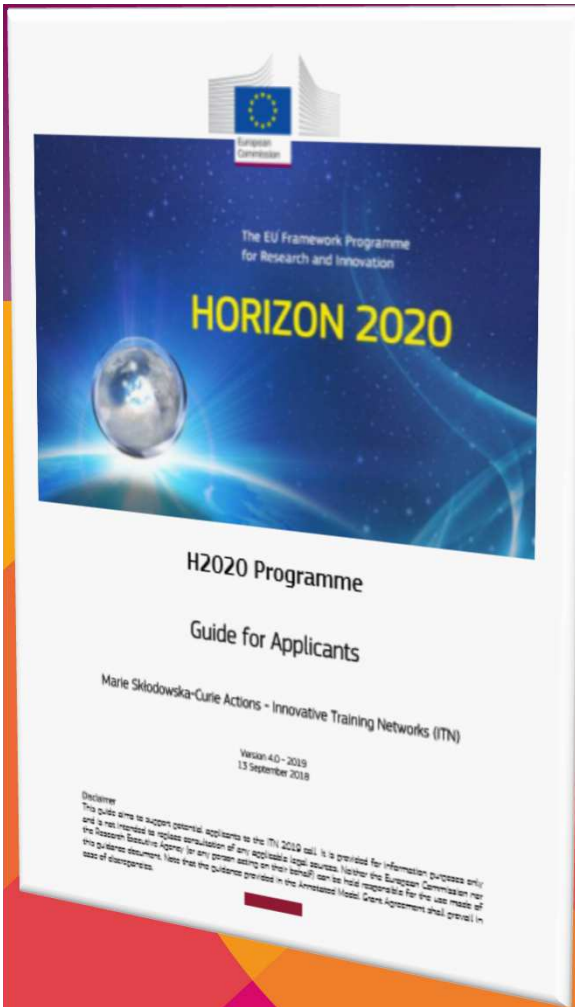
4. **EID SPECIFIC REQUIREMENTS (FOR EID ONLY)**
5. **CAPACITIES OF THE PARTICIPATING ORGANISATIONS**
6. **ETHICS ISSUES**
7. **LETTERS OF COMMITMENT**



ITN Evaluation Criteria

ITN: Marie Skłodowska-Curie Innovative Training Networks		
Excellence	Impact	Quality and efficiency of the implementation
Quality, innovative aspects and credibility of the research programme (including inter/multidisciplinary, intersectoral and, where appropriate, gender aspects)	Enhancing the career prospects and employability of researchers and contribution to their skills development	Coherence and effectiveness of the work plan, including appropriateness of the allocation of tasks and resources, (including awarding of the doctoral degrees for <i>EID</i> and <i>EJD</i> projects)
Quality and innovative aspects of the training programme (including transferable skills, inter/multidisciplinary, intersectoral and, where appropriate, gender aspects)	Contribution to structuring doctoral / early-stage research training at the European level and to strengthening European innovation capacity, including the potential for: a) meaningful contribution of the non-academic sector to the doctoral/research training, as appropriate to the implementation mode and research field b) developing sustainable joint doctoral degree structures (for <i>EJD</i> projects only)	Appropriateness of the management structures and procedures, including quality management and risk management (with a mandatory joint governing structure for <i>EID</i> and <i>EJD</i> projects)
Quality of the supervision (including mandatory joint supervision for <i>EID</i> and <i>EJD</i> projects)	Quality of the proposed measures to exploit and disseminate the project results	Appropriateness of the infrastructure of the participating organisations
Quality of the proposed interaction between the participating organisations	Quality of the proposed measures to communicate the project activities to different target audiences	Competences, experience and complementarity of the participating organisations and their commitment to the programme
50%	30%	20%
Weighting		
1	2	3
Priority in case of <i>ex aequo</i>		

Reference Documents



MSCA WORK PROGRAMME

2018 - 2020





euraxess
RESEARCHERS IN MOTION

<http://ec.europa.eu/euraxess/>



EURAXESS

JOBS & FUNDING

CAREER DEVELOPMENT

PARTNERING

INFORMATION & ASSISTANCE

EURAXESS WORLDWIDE

LOGIN / REGISTER



WORKING ENVIRONMENT

Charter & Code for Researchers
Human Resources Strategy for Researchers (HRS4R)
Pensions & RESAVER

SCIENCE4REFUGEES INITIATIVE

CAREER DEVELOPMENT

EURAXESS Career Development Centres
Training for Researchers
Training to Enhance Researcher Skills
Doctoral Training Principles

 FIND JOBS >

 POST JOBS >

 FIND FUNDING >

 FIND HOSTING >

JOB OFFERS

FUNDING & HOSTING OFFERS

WORKING ENVIRONMENT

CAREER DEVELOPMENT

<http://ec.europa.eu/euraxess/>

Next MSCA call

Funding opportunities

Innovative Training Networks (ITN):

▶ 12/09/2019 □ 14/01/2020 € €530.10 million

Individual Fellowships (IF):

▶ 11/04/2019 □ 11/09/2019 € €294.50 million

▶ 08/04/2020 □ 09/09/2020 € €328.00 million

RISE:

▶ 05/12/2019 □ 28/04/2020 € €80.00 million

COFUND:

▶ 04/04/2019 □ 26/09/2019 € €90.00 million

▶ 08/04/2020 □ 29/09/2020 € €100.00 million

NIGHT:

▶ 08/10/2019 □ 09/01/2020 € €8.00 million



Get in touch



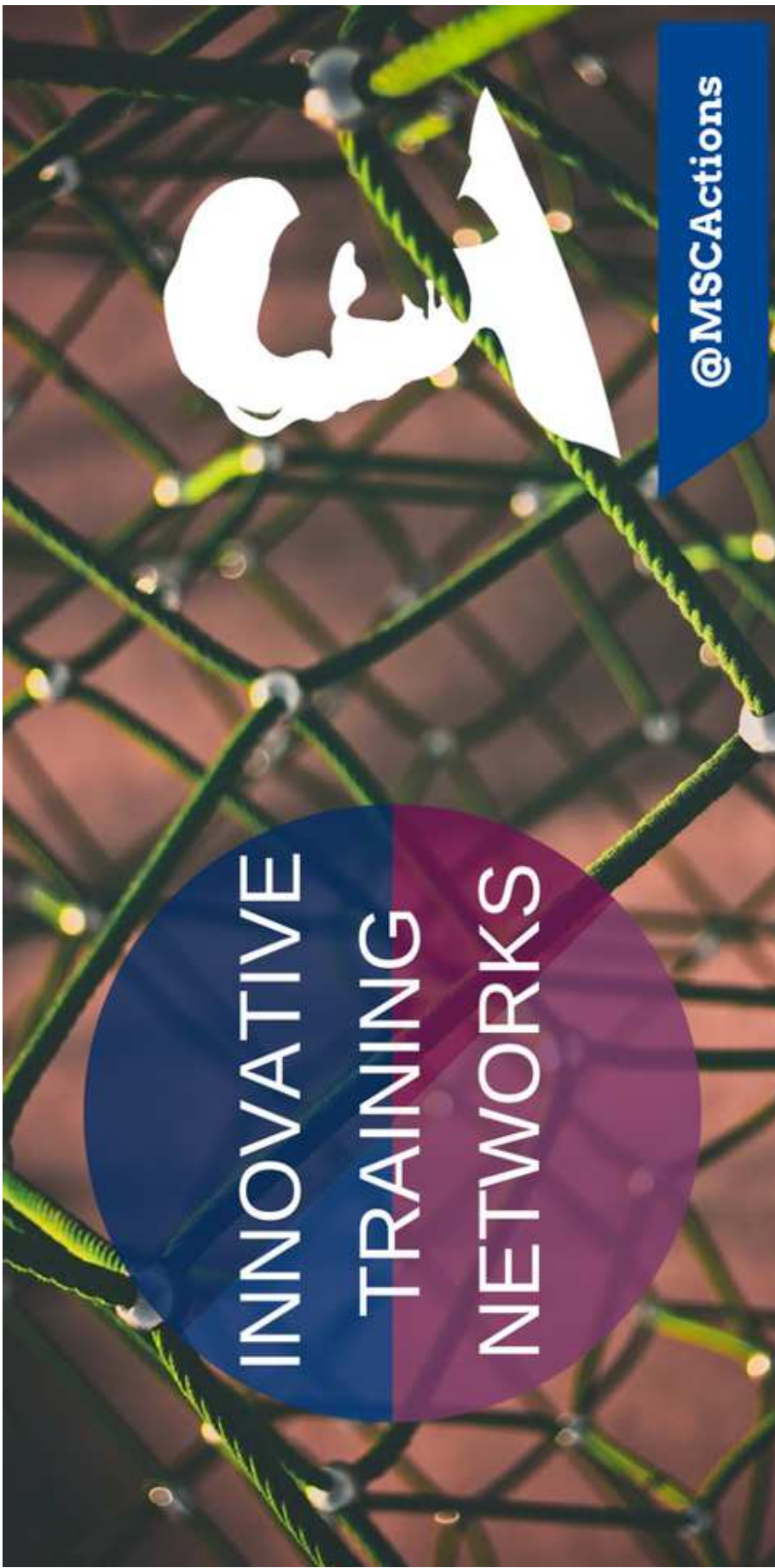
Your MSCA National Contact Point
REA-MSCA-H2020-ITN@ec.europa.eu



**FIRST-CLASS SUPPORT
FOR EUROPEAN RESEARCH
THAT MATTERS**

*Credits:
Icon made by Freepik from www.flaticon.com
Images from Getty Images or iStock*





INNOVATIVE
TRAINING
NETWORKS

@MSCActions

