

MY MSC EXPERIENCE

**TAL SEIDEL MALKINSON
PICNIC LAB**

**INSTITUT DU CERVEAU ET DE LA MOELLE
ÉPINIÈRE, INSERM UMRS 1127**

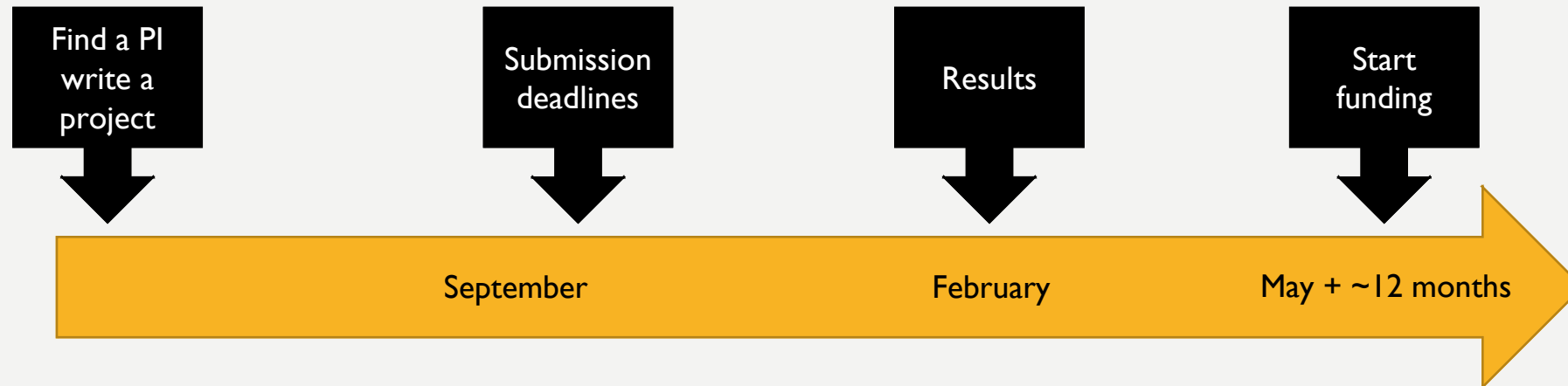
SHORT CV



- 2015 - PhD in clinical neuropsychology and neurobiology in the Hebrew University of Jerusalem, Israel
 - 2016 – Post Doc, Institut du Cerveau et de la Moelle Épineuse UMRS 1127, Paris
- **MOBILITY**
- applied for MSC EF-IF fellowship first in 2014
 - re-applied in 2015
 - What the MSC fellowship allowed me to achieve?

PROPOSAL WRITING PROCESS

WHEN?



Start a year before you actually plan to start your post doc!

PROPOSAL WRITING PROCESS

HELP!

- National contact points: Eligibility, experience calculation, etc...
- Grants office in the ICM: Host institute description
- MSC fellows
- Internet

PROPOSAL WRITING PROCESS

The proposal

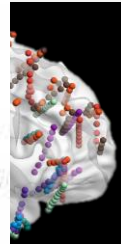
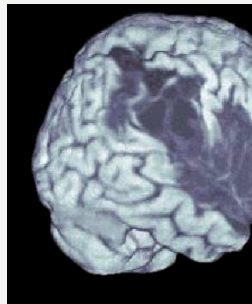
- Scientific Project : excellent project that will help the fellow develop new skills and a research niche of their own
- Supervisor + Host institute: why they are the right match for the fellow's training
- Mutual benefit

PROPOSAL WRITING PROCESS

Tips

- Choose the right panel
- Stick to the text
- Learn the lingo (milestones, deliverable, work package, communication, dissemination, transferability...)
- Give ALL the details
- Emphasize the training
- Be realistic
- Choosing a host and country
- Resubmit!

MY PROJECT – THE NEURAL CORRELATES OF SPATIAL ATTENTION



Attention sets priorities among processed stimuli, but how does our brain do it?

1. The spatiotemporal neural dynamics of normal attention using intracerebral recordings
2. Pathological alterations in attention dynamics, resulting from right hemisphere lesions, and leading to visual neglect, using MEG.

EVALUATION REPORT #1

Evaluation Summary Report

Evaluation Result

Total score: 90.40% (Threshold: 70.0/100.00)

Form information

SCORING

Scores must be in the range 0-5.

Criterion 1 - Excellence

Score: **4.40** (Threshold: 0.00/5.00 , Weight: 50.00%)

Quality, innovative aspects and credibility of the research (including inter/multidisciplinary aspects)

Clarity and quality of transfer of knowledge/training for the development of researcher in light of the research objectives

Quality of the supervision and the hosting arrangements

Capacity of the researcher to reach or re-enforce a position of professional maturity in research

Strengths:

- The project is generally well designed, and makes use of *state-of-the-art technology available at the host institution*.
- The results from this project are relevant and can enhance our understanding of brain physiology and pathophysiology.
- The originality and innovation aspects of the research program are well addressed (e.g., intracranial studies of cognition in patients suffering from epilepsy).
- The *numerous training aspects and benefits for the researcher* are adequately described.
- The *benefits for the host institution from the researcher's expertise* are convincingly argued.
- *Transfer of the researcher's previous knowledge to the host institution* is adequately outlined.

EVALUATION REPORT #1

- *Excellent infrastructure in support of research and professional development are in place at the host institution.*
- *The supervisor has extensive experience, many international research collaborations, and in supervising many visiting fellows.*
- *The researcher's previous experience matches very well with the proposed project.*
- *There is evidence of the applicant's ability for research and education in an international environment.*

Weaknesses:

- *The potential role of gender of subjects/patients is not discussed nor adequately integrated in the study design (e.g., through age and gender matching for the selection of healthy controls).*
- * *The general hosting arrangements (e.g., administrative support, etc.) are insufficiently described.*
- *The researcher's productivity in terms of scientific publications in international peer reviewed journals is insufficiently presented.*
- *The researcher's CV insufficiently demonstrates independent thinking and leadership qualities.*

Overall comments

Not provided

EVALUATION REPORT #1

Criterion 2 - Impact

Score: **4.80** (Threshold: 0.00/5.00 , Weight: 30.00%)

Enhancing research- and innovation-related human resources, skills, and working conditions to realise the potential of individuals and to provide new career perspectives

Effectiveness of the proposed measures for communication and results dissemination

Strengths:

- The impact the project will have on the development of the researcher's professional career has been convincingly demonstrated.
- The project will enhance European excellence in the area of neurological research on attention in general and on neurodegenerative diseases in particular.
- Dissemination activities targeted at audiences within, and beyond the research community have been adequately described.
- Issues related to intellectual property rights have been taken into consideration adequately.

Weaknesses:

- The public engagement strategy insufficiently addresses the potential implementation of research results in clinical practice.

EVALUATION REPORT #1

Criterion 3: Implementation

Score: **4.40** (Threshold: 0.00/5.00 , Weight: 20.00%)

Overall coherence and effectiveness of the work plan, including appropriateness of the allocation of tasks and resources

Appropriateness of the management structures and procedures, including quality management and risk management

Appropriateness of the institutional environment (infrastructure)

Competences, experience and complementarity of the participating organisations and institutional commitment

Strengths:

- The host institution offers excellent infrastructure as well as a unique combination of relevant expertise in different disciplines.
- The host institution will offer opportunities to the researcher to become involved in other ongoing research projects and teaching activities and thus further develop professionally.
- The scientific competence and outstanding experience of the hosting institution are well demonstrated.
- The way how the fellowship will be beneficial for both the researcher and hosting institution has been well described.

Weaknesses:

- The management structure and administrative procedures at the host and the external partners are unconvincingly described.
- The risk management regarding complications with patient recruitment or negative results are not clearly described.

Overall comments

Not provided

EVALUATION REPORT #2

Evaluation Result

Total score: 94.40% (Threshold: 70/100.00)

Criterion 1 - Excellence

Score: 4.90 (Threshold: 0/5.00 , Weight: 50.00%)

Quality, innovative aspects and credibility of the research (including inter/multidisciplinary aspects)

Clarity and quality of transfer of knowledge/training for the development of researcher in light of the research objectives

Quality of the supervision and the hosting arrangements

Capacity of the researcher to reach or re-enforce a position of professional maturity in research

Strengths:

- The research objectives are clearly outlined against an updated and neatly explained state-of-the-art (on the neural bases of visual attention and its neglect), and their importance is well delineated.
- The interdisciplinarity and multidisciplinary aspects of the research are convincingly argued (e.g., a combination of intracranial recordings, magnetoencephalography (MEG), as well as behavioral (psychophysics) methods.
- The project is innovative and timely focusing on intracerebral recordings in human participants with unrivaled spatial and temporal resolution, during the performance of attention tasks.
- The proposal emphasizes how the high-quality and novel research approach would open up the best career opportunities for the researcher.
- The numerous training aspects and benefits for the researcher are adequately described.
- The benefits that the host institution would gain from the researcher's expertise are well argued.
- Transfer of previous researcher's knowledge to the host institution is adequately outlined.
- The supervisors' excellent level of experience and professional achievements in the proposal's research topics are convincingly outlined.
- The host institution demonstrates excellent experience in this field, and houses two units that could adequately deal with all practical and administrative arrangements.
- The researcher's CV demonstrates a reasonable match to the topic of the proposal.
- The researcher demonstrates very good independent thinking and potential for leadership (e.g., having successfully applied for grant money as Co-PI).
- The applicant convincingly demonstrates the potential for reaching a position of professional maturity.
- Ethical issues are raised and very well addressed.

Weaknesses:

- The researcher's track record of scientific publications in quality journals is still limited.

EVALUATION REPORT #2

Criterion 2 - Impact

Score: 4.70 (Threshold: 0/5.00 , Weight: 30.00%)

Enhancing research- and innovation-related human resources, skills, and working conditions to realise the potential of individuals and to provide new career perspectives

Effectiveness of the proposed measures for communication and results dissemination

Strengths:

- The potential impact of the proposed research and training on the applicant's career is sufficiently delineated.
- The specific impact of the researcher's activities for European research excellency is well delineated in the fields of experimental psychology, clinical neuroscience, and neurobiology.
- The proposal adequately describes strategies for communication and public engagement, including (i) visits in school; (strengthen the bond between basis research and clinical routine; (iii) coverage in TV and newspapers, (iv) internet magazine siliconwadi.fr; (v) talks to non-scientific audiences.
- Intellectual property issues are addressed.

Weaknesses:

- Although measures for communication of scientific results are well outlined, the *foreseen scientific publications are over-ambitious* in the light of the researcher's track record of publications (minor weakness).
- Exploitation of results for *long-term clinical applications is insufficiently addressed*, and possible fields of application are only vaguely described.

EVALUATION REPORT #2

Criterion 3 - Implementation

Score: **4.30** (Threshold: 0/5.00 , Weight: 20.00%)

Overall coherence and effectiveness of the work plan, including appropriateness of the allocation of tasks and resources

Appropriateness of the management structures and procedures, including quality management and risk management

Appropriateness of the institutional environment (infrastructure)

Competences, experience and complementarity of the participating organisations and institutional commitment

Strengths:

- The work plan is structured in two work packages reflecting the project tasks and milestones.
- The Gantt chart includes both progress monitoring and risk management tasks.
- The host institution is the largest neuroscience institute and the largest neurological hospital in the country, and it houses excellent facilities and infrastructures necessary for the execution of the proposal (e.g., fMRI, EEG, MEG, TMT, eye tracking, psychophysics lab, software, etc).
- Together with the supervision by leading experts in the field, the host institution offers a unique environment for realizing a maximally successful training and research outcome.
- The researcher would benefit from the plethora of one-on-one tutoring and formal training it offers on innovative methods, management and career-honing skills.
- The researcher convincingly explains how the proposed project would greatly reinforce both the researcher's professional career and the international visibility and excellence of the host organization.

Weaknesses:

- The research tasks in the work packages are described with insufficient detail, and deliverables (paper writing and submission) are unconvincingly scheduled (e.g., it is unrealistic to write up and submit so many scientific papers in the last few months).
- The project's management structure and procedures are presented with insufficient details given the complexity of the project involving intracranial recordings in patients.
- Risk management activities are not adequately delineated (e.g., as these would largely depend on the supervisor facilitating patient recruitment).