

# H2020-MSCA-ITN-2019

## Innovative Training Networks



*8 octobre 2018*

# MSCA ITN INFO SESSION

## 1. Policy

Horizon 2020  
Marie Skłodowska  
Curie Actions (MSCA)

## 2. ITN Specificities

Participants  
Recruitment  
Budget

## 3. Application

Participant Portal  
ITN proposal  
Euraxess

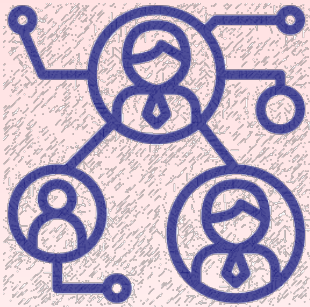
## 4. Next ITN calls



# H2020: World class Science & Enabling Innovation - 80 billion EUR



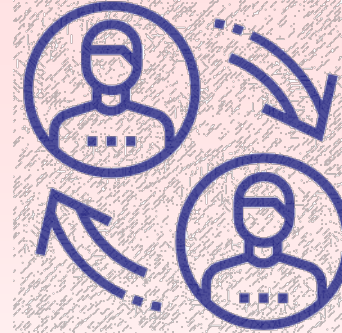
# Marie Skłodowska-Curie Actions



**Innovative  
Training  
Networks**



**Individual  
fellowships**



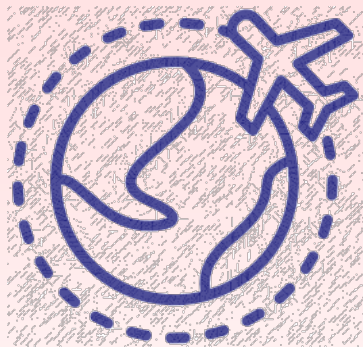
**Research and  
Innovation Staff  
Exchanges**



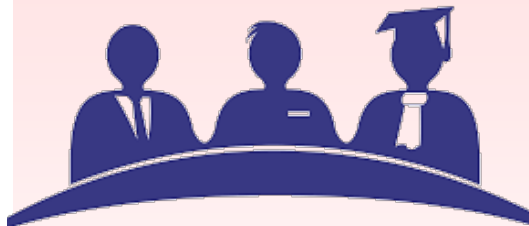
**Cofunding of  
research  
programmes**



# ITN excellence in training



**Countries**

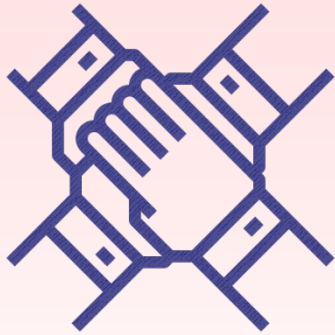


**Sectors**

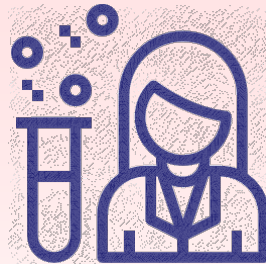


**Disciplines**

# ITN Objectives



**Collaborations  
international &  
intersectoral**



**ESRs  
Transnational  
mobility**



**R&I activities  
Doctoral  
programme**

# ITN in practice

## 3 modes

ETN

European  
Training  
Networks

*Participants implement  
a joint research programme*

EID

European  
Industrial  
Doctorates

*Doctoral training with the  
non-academic sector*

EJD

European  
Joint  
Doctorates

*Doctoral programme to  
deliver joint degrees*

# ITN in practice



## Who

Minimum 3 independent organisations from 3 different MS/AC countries

Early-Stage Researchers (**ESRs**)

## What

R&I activities, training, supervision

## How

Recruitment: 3 to 36 months

## How long

Up to 4 years

## How much

Max. 540 person month (unit cost)



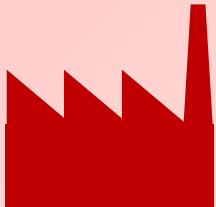


# Who applies ?



## Academic sector

- ✓ public /private higher education establishments awarding academic degrees
- ✓ public /private non-profit research organisations whose primary mission is to pursue research
- ✓ international European interest organisations (e.g. CERN, EMBL)



## Non-academic sector

- ✓ any entity not included in the academic sector:
- ✓ e.g. large companies, SMEs, NGOs, museums, hospitals
- ✓ international organisations (e.g. UN, WHO)

# Eligibility rules?

EU 28 Member States (MS)  
Associated Countries (AC)  
Third Countries (TC)

**ETN**

Min. 3 beneficiaries from any sector  
from 3 different MS/AC

**EID**

Min. 2 beneficiaries from 2 different MS/AC:  
min. 1 from academic  
+ min. 1 from non-academic sector

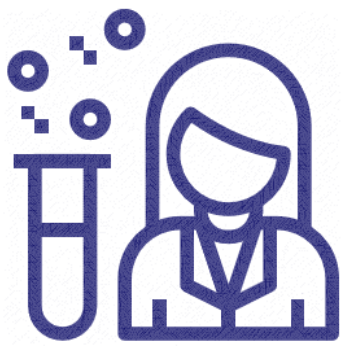
**EJD**

Min. 3 beneficiaries  
from academic sector awarding PhD  
from 3 different MS/AC

Above this minimum: participants from any sector / country

# ITN Consortium Participants

Beneficiary	Partner Organisation
In Member State (MS) or H2020 Associated Country (AC)	+ In Third Country (TC)
Recruit researchers	Do NOT recruit researchers
Trains/hosts seconded researchers	
Sign Grant	Do NOT sign Grant
Claim costs	Do NOT Claim costs
Overall implementation	Letter of Commitment required



# Early-Stage Researchers

Only Early-Stage Researchers (**ESRs**):

- $\leq 4$  years of research experience
- no PhD yet

Mandatory **trans-national mobility** at the time of recruitment.

Recruitment: **3 to 36** months after the project starts

## Joint research training programme

### Mandatory

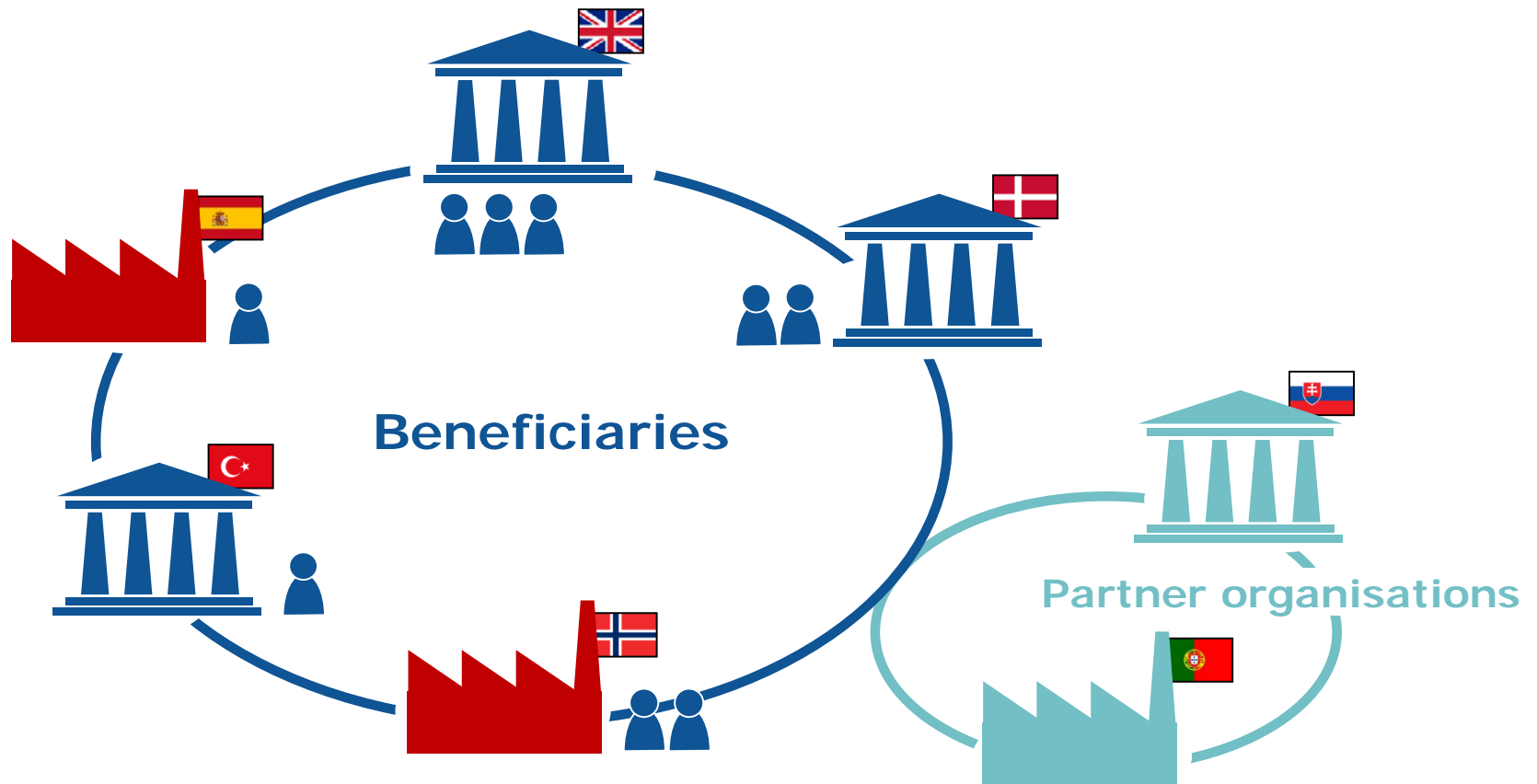
- ✓ Minimum 3 beneficiaries from 3 different MS/AC
- ✓ Each beneficiary recruits and/or hosts at least 1 ESR
- ✓ Max 540 person-months (e.g. 15 ESRs x 36 months)
- ✓ Max 40% budget to one country

### Other features

- ✓ Non-academic sector participation essential
- ✓ PhD enrolment typically expected (not mandatory)
- ✓ **Secondments to other countries/sector/disciplines ( $\leq 30\%$  time)**
- ✓ Joint supervision recommended
- ✓ Partner organisations (any country/sector)
- ✓ Typically 6-10 beneficiaries



# ETN



## Doctoral training with the non-academic sector

### Mandatory

- ✓ Minimum 2 beneficiaries from 2 different MS/AC  
1 academic + 1 non-academic
- ✓ If: 2 organisations = Max 180 person-months  
If:  $\geq 3$  organisations = Max 540 person-months
- ✓ Each ESR enrolled in a PhD
- ✓ Each ESR spends  $\geq 50\%$  time in non-academic sector
- ✓ Joint selection, training and supervision (1 supervisor/sector)
- ✓ Intersectoral secondments are international between beneficiaries

### Other features

- ✓ Individual research projects under the topic of the doctoral programme
- ✓ Partner organisations (any country/sector)
- ✓ Flexible recruitment rule

EID



**≥3 beneficiaries: max 540 PM**

## Universities cooperating to deliver joint multiple doctoral degrees

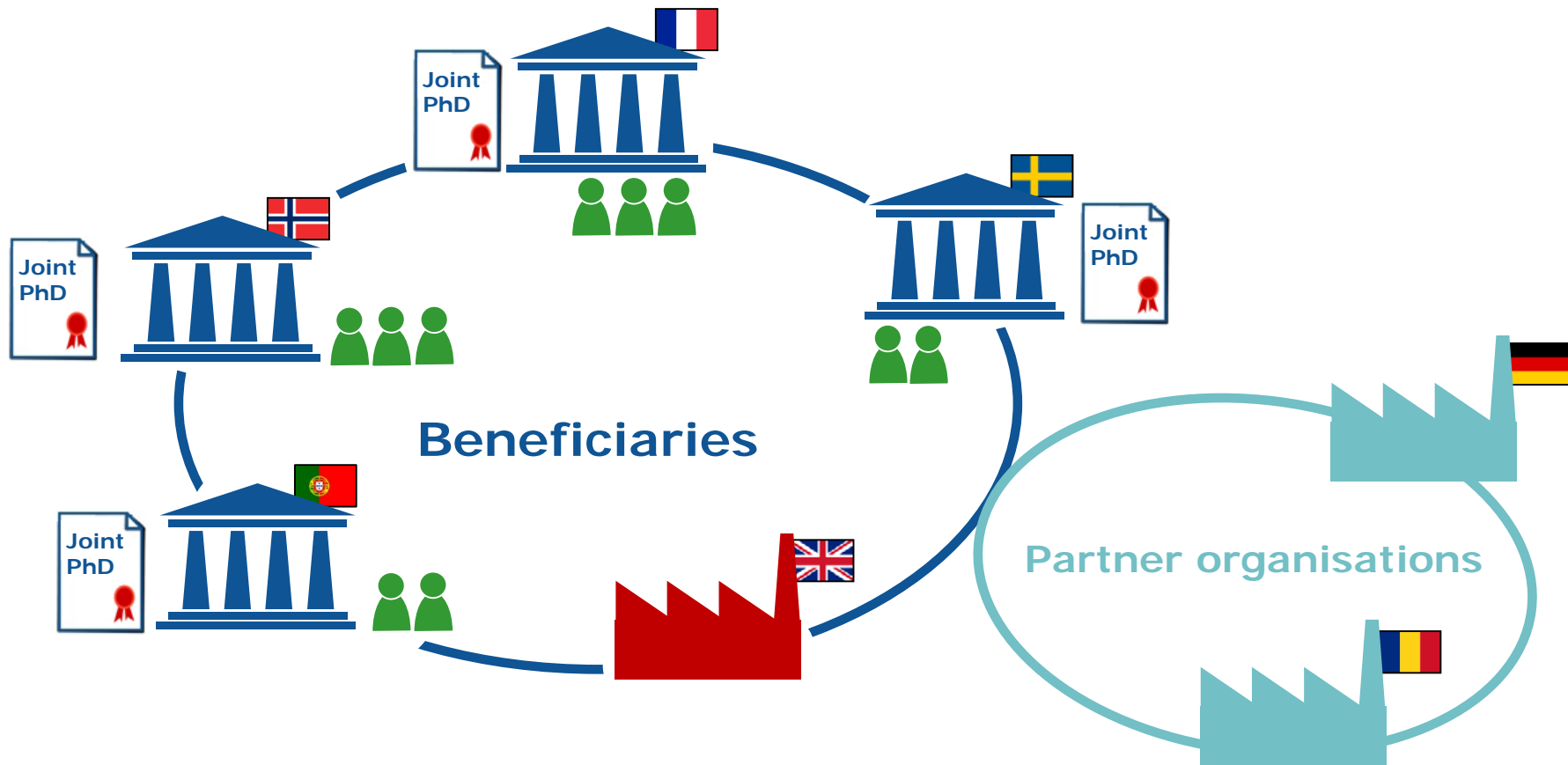
### Mandatory

- ✓ Minimum 3 beneficiaries from 3 different MS/AC
- ✓ Minimum 3 beneficiaries entitled to award doctoral degree, of which at least 2 established in a MS/AC
- ✓ At least 2/3 of the supported ESRs enrolled in a joint/double/multiple doctoral degree awarded by two or more beneficiaries/partner organisations in a MS/AC
- ✓ Each ESR enrolled in the joint (international) doctoral programme
- ✓ Joint admission, selection, training, supervision, governance
- ✓ Commitment to deliver joint/double/multi degrees
- ✓ Max 540 person-months (e.g. 15 ESRs x 36 months)
- ✓ Letters of institutional commitment from Organisations to deliver PhD degrees are required in the proposal (template)

### Other features

- ✓ Please refer to Guide for Applicants

# EJD

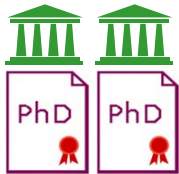




# EJD



**Joint degree:** single diploma issued by at least 2 academic institutions located in 2 different countries and recognised officially



**Double/multiple degree:** 2 or more separate national diplomas issued by two or more higher education institutions located in different countries and recognised officially



**Letters of institutional commitment** to deliver joint/double doctoral degrees are mandatory in the proposal

# Summary

	ETN	EID	EJD
<b>Beneficiaries</b>	≥3 from 3 diff. MS/AC	≥2 from 2 diff. MS/AC: (≥1 academic + ≥1 non-academic)	≥3 (acad. award PhD) from 3 diff. MS/AC
<b>Person-months</b>	Max. 540	Max. 180 / 540	Max. 540
<b>Researchers</b>	ESRs only (3-36 months)		
<b>Partner Organ.</b>	Unlimited (any country / sector / discipline)		
<b>PhD enrolment</b>	typically expected	<b>mandatory</b>	<b>mandatory</b>
<b>Non-academic participation</b>	essential	<b>mandatory</b>	essential
<b>Inter-sectoral exposure</b>	possible through secondments	≥50% in non-academic International (for beneficiaries)	possible through secondments
<b>Panels and rank lists</b>	8 panels: CHE, ECO, ENG, ENV, LIF, MAT, PHY, SOC (400 M€)	EID panel (35 M€)	EJD panel (35 M€)



# Funding mechanism

## Unit costs

Unit costs are a pre-estimated cost for the implementation of the action.

## Advantage when applying

Automated calculation of budget when computing ESR months in your proposal

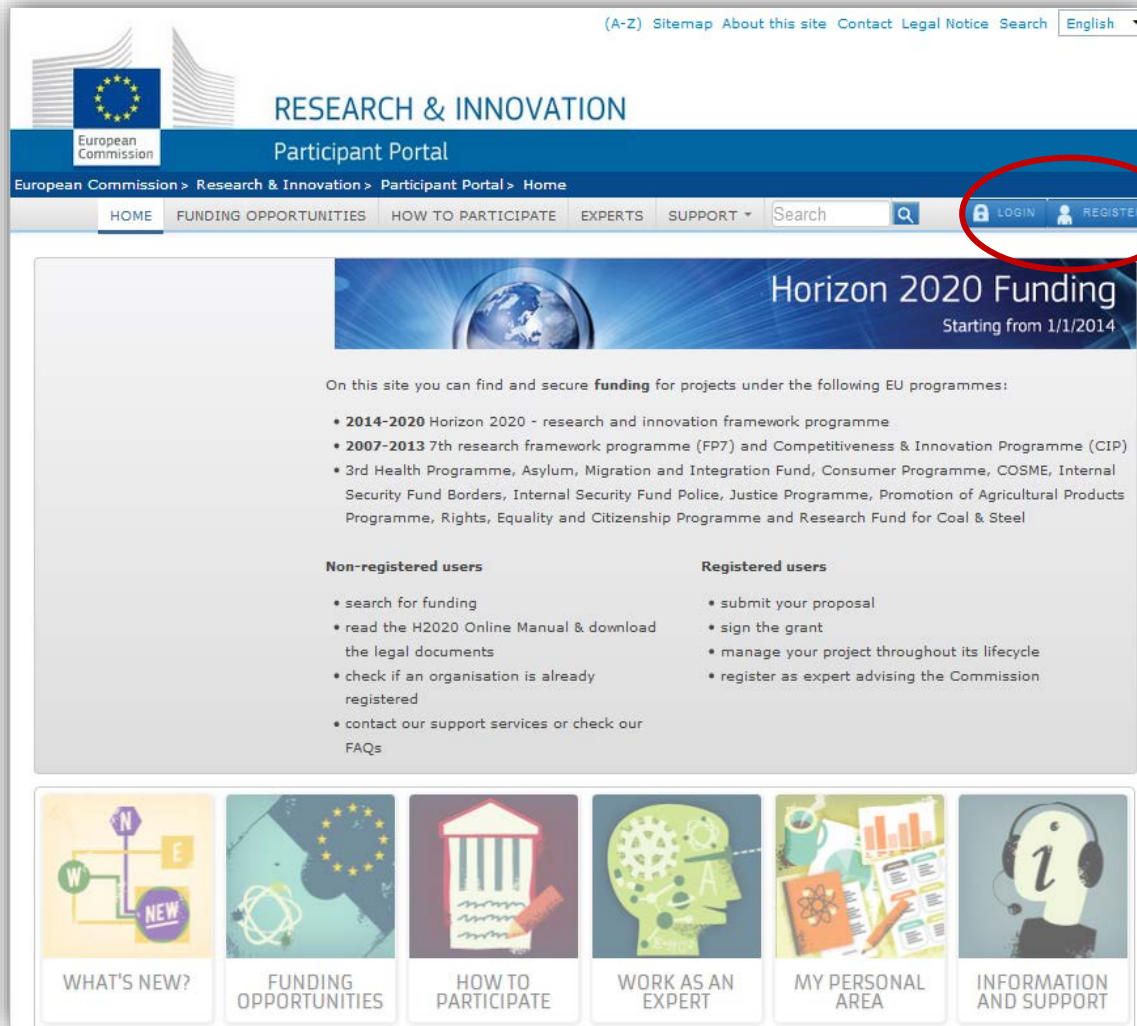
**1 unit  
=  
1 month of  
eligible ESR**

# EU contribution for ITN recruitments



Researcher			Institution	
Living * allowance	Mobility allowance	Family allowance	Research, training and networking costs	Management and indirect costs
3.270	600	500	1.800	1.200

# Participant Portal



(A-Z) Sitemap About this site Contact Legal Notice Search English

**RESEARCH & INNOVATION**  
European Commission  
Participant Portal

European Commission > Research & Innovation > Participant Portal > Home

HOME FUNDING OPPORTUNITIES HOW TO PARTICIPATE EXPERTS SUPPORT Search LOGIN REGISTER


## Horizon 2020 Funding

Starting from 1/1/2014


On this site you can find and secure **funding** for projects under the following EU programmes:

- **2014-2020** Horizon 2020 - research and innovation framework programme
- **2007-2013** 7th research framework programme (FP7) and Competitiveness & Innovation Programme (CIP)
- 3rd Health Programme, Asylum, Migration and Integration Fund, Consumer Programme, COSME, Internal Security Fund Borders, Internal Security Fund Police, Justice Programme, Promotion of Agricultural Products Programme, Rights, Equality and Citizenship Programme and Research Fund for Coal & Steel


Non-registered users	Registered users
<ul style="list-style-type: none"><li>• search for funding</li><li>• read the H2020 Online Manual &amp; download the legal documents</li><li>• check if an organisation is already registered</li><li>• contact our support services or check our FAQs</li></ul>	<ul style="list-style-type: none"><li>• submit your proposal</li><li>• sign the grant</li><li>• manage your project throughout its lifecycle</li><li>• register as expert advising the Commission</li></ul>




WHAT'S NEW?




FUNDING OPPORTUNITIES




HOW TO PARTICIPATE



WORK AS AN EXPERT



MY PERSONAL AREA



INFORMATION AND SUPPORT



# ITN proposal "anatomy"

## Part A - structured data -

European Commission - Research - Participants  
Proposal Submission Forms  
Research Executive Agency

Horizon 2020  
Sub-programme  
Call: H2020-MSCA-ITN  
Topic: MSCA-ITN-2015  
Action: MSCA-ITN-2015  
Proposal Number: [blank]  
Proposer: [blank]

**new**

Section	Title
1	General information
2	Participants & contacts
3	Budget
4	Ethics
5	Call-specific questions

How to fill in the forms?  
The administrative forms must be filled in for each proposal using the template data fields in the administrative forms are pre-filled based on the previous stage.

Read more

H2020-ITN.pdf - Ver 1.54 20140318 Page 1 of 12 Last saved: 24/05/2014 at 16:05

## Part B - description of action -

Annex 5  
Annex 5 - Part B Template

START PAGE

MARIE SKŁODOWSKA-CURIE ACTIONS  
Innovative Training Networks (ITN)  
Call: H2020-MSCA-ITN-2015

PART B

"PROPOSAL ACRONYM"

This proposal is to be evaluated as:  
[ETN] [E1D] [E3D]  
[delete as appropriate]

Part B - Page X of Y  
Marie Skłodowska-Curie Actions, Guide for Applicants  
Innovative Training Networks 2015

Page 32 of 40

# ITN proposal Part A

- **Section 1:** General information (including Abstract)
- **Section 2:** Information on participants
- **Section 3:** Budget and recruitment tables
- **Section 4:** Ethics table

# ITN proposal Part B

## DOCUMENT 1 (Proposal Number-Acronym-Part B1)

START PAGE (*1 page*)

TABLE OF CONTENTS (*1 page*)

LIST OF PARTICIPATING ORGANISATIONS (max 2 pages)

---

**START PAGE COUNT (MAX 30 PAGES SECTIONS 1-3)**

1. EXCELLENCE (*starting page 5*)
2. IMPACT
3. QUALITY AND EFFICIENCY OF THE IMPLEMENTATION

**30 pages  
limit**

---

**STOP PAGE COUNT (MAX 30 PAGES SECTIONS 1-3)**

## DOCUMENT 2 (Proposal Number-Acronym-Part B2)

**NO OVERALL PAGE LIMIT APPLIED**

4. EID SPECIFIC REQUIREMENTS (FOR EID ONLY)
5. CAPACITIES OF THE PARTICIPATING ORGANISATIONS
6. ETHICS ISSUES
7. LETTERS OF COMMITMENT



# ITN Evaluation Criteria

ITN: Marie Skłodowska-Curie Innovative Training Networks		
Excellence	Impact	Quality and efficiency of the implementation
Quality, innovative aspects and credibility of the research programme (including inter/multidisciplinary, intersectoral and, where appropriate, gender aspects)	Enhancing the career prospects and employability of researchers and contribution to their skills development	Coherence and effectiveness of the work plan, including appropriateness of the allocation of tasks and resources, (including awarding of the doctoral degrees for <i>EID</i> and <i>EJD</i> projects)
Quality and innovative aspects of the training programme (including transferable skills, inter/multidisciplinary, intersectoral and, where appropriate, gender aspects)	Contribution to structuring doctoral / early-stage research training at the European level and to strengthening European innovation capacity, including the potential for:  a) meaningful contribution of the non-academic sector to the doctoral/research training, as appropriate to the implementation mode and research field  b) developing sustainable joint doctoral degree structures (for <i>EJD</i> projects only)	Appropriateness of the management structures and procedures, including quality management and risk management (with a mandatory joint governing structure for <i>EID</i> and <i>EJD</i> projects)
Quality of the supervision (including mandatory joint supervision for <i>EID</i> and <i>EJD</i> projects)	Quality of the proposed measures to exploit and disseminate the project results	Appropriateness of the infrastructure of the participating organisations
Quality of the proposed interaction between the participating organisations	Quality of the proposed measures to communicate the project activities to different target audiences	Competences, experience and complementarity of the participating organisations and their commitment to the programme
50%	30%	20%
Weighting		
1	2	3
Priority in case of <i>ex aequo</i>		



# MSCA Work Programme 2018-2020

## Guide for Applicants







euraxess

RESEARCHERS IN MOTION

<http://ec.europa.eu/euraxess/>

# EURAXESS

JOBS &  
FUNDING

CAREER  
DEVELOPMENT

PARTNERING

INFORMATION  
& ASSISTANCE

EURAXESS  
WORLDWIDE

LOGIN /  
REGISTER



## WORKING ENVIRONMENT

Charter & Code for Researchers  
Human Resources Strategy for Researchers (HRS4R)  
Pensions & RESAVER

## SCIENCE4REFUGEES INITIATIVE

## CAREER DEVELOPMENT

EURAXESS Career Development Centres  
Training for Researchers  
Training to Enhance Researcher Skills  
Doctoral Training Principles



FIND JOBS >



POST JOBS >



FIND FUNDING >



FIND HOSTING >

JOB OFFERS

FUNDING &  
HOSTING OFFERS

WORKING  
ENVIRONMENT

CAREER  
DEVELOPMENT

<http://ec.europa.eu/euraxess/>



European  
Commission

# Next MSCA ITN calls



H2020-MSCA-ITN call	2019	2020
Opening Date Closing Date	13 SEP 2018 15 JAN 2019	12 OCT 2019 9 JAN 2020
Budget	<b>470 million €</b> ETN 400M€ EID 35M€ EJD 35M€	<b>525 million €</b>

# Get in touch



Your MSCA National Contact Point  
[REA-MSCA-H2020-ITN@ec.europa.eu](mailto:REA-MSCA-H2020-ITN@ec.europa.eu)



*Credits:  
Icon made by Freepik from [www.flaticon.com](http://www.flaticon.com)  
Images from Getty Images or iStock*