

E T N A
2 0 2 0

Connaught Automotive Research (CAR) Group
National University of Ireland, Galway,
IRELAND

Speaker: Edward Jones





Group Overview

- Directors: Martin Glavin, Edward Jones
- Organisation: National University of Ireland, Galway (NUI Galway), IRELAND
- Laboratory: Connaught Automotive Research (CAR) Group, Dept. of Electrical & Electronic Engineering
- Skillsets: Sensor signal processing, image processing, computer vision, machine learning
- Applications in Connected and Autonomous Vehicles:
 - Monitoring for vehicle perception (exterior) – especially in challenging conditions (weather, poor lighting)
 - Driver monitoring (interior) – leveraging existing expertise in bioelectric signal monitoring

Contact

- Martin Glavin (martin.glavin@nuigalway.ie), Edward Jones (edward.jones@nuigalway.ie)
- <http://car.nuigalway.ie>



Selected Projects



Lane Departure Warning



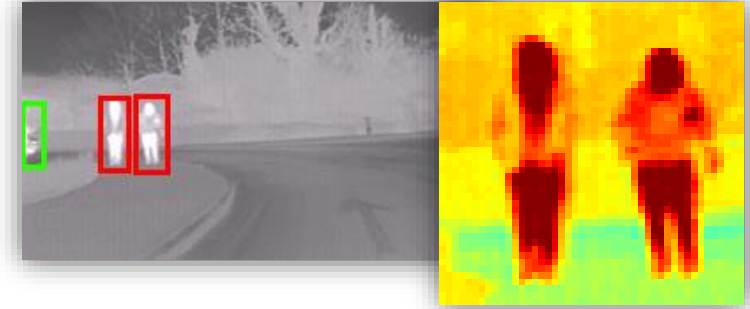
Collaboration



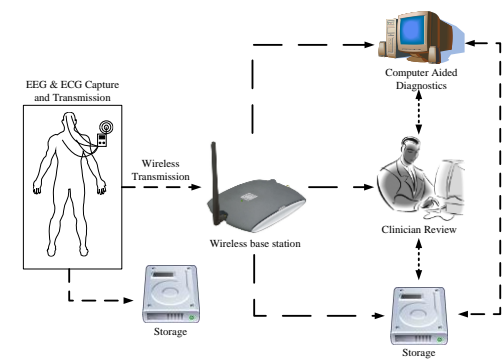
Shadow Removal



Horizon 2020 Project



Night-time Pedestrian Detection



Digital Healthcare (bio-signal Monitoring)

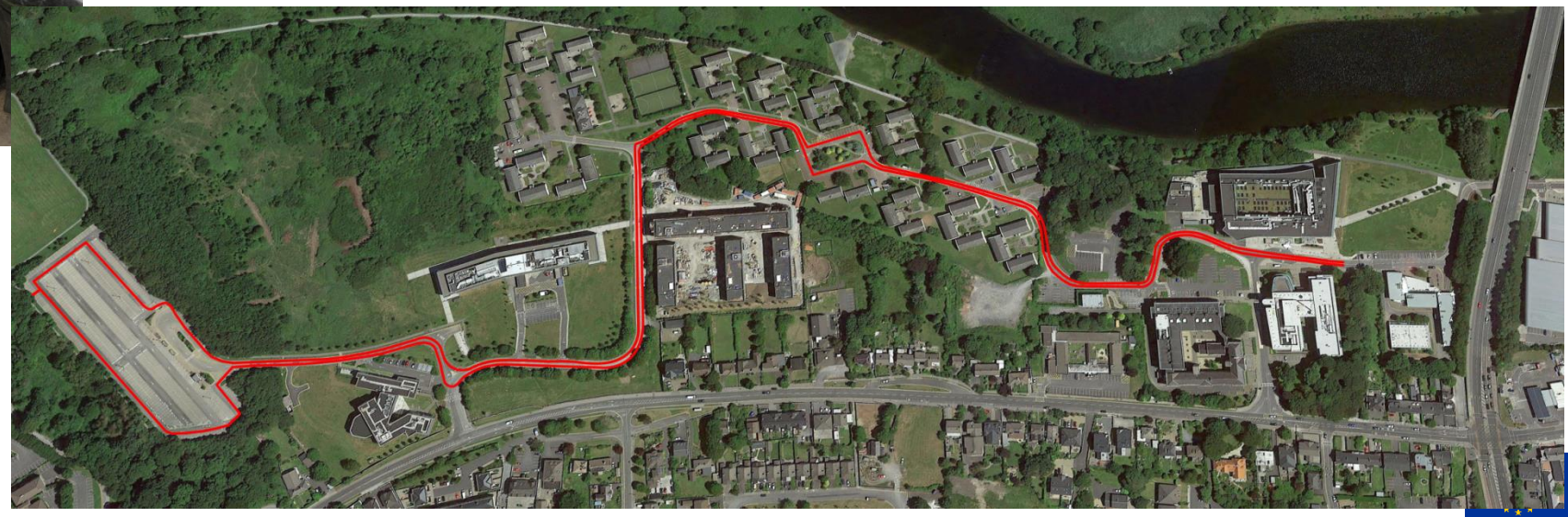


Facilities and Test Infrastructure



Sensor-equipped Test Vehicle

NUI Galway Campus test bed





Topics of Interest

- MG-2-12-2020 Improving road safety by effectively monitoring working patterns and overall fitness of drivers (Safe, Integrated and Resilient Transport Systems)
- DT-ART-06-2020 Large-scale, cross-border demonstration of connected and highly automated driving functions for passenger cars (Automated Road Transport)
- DT-ART-05-2020 Efficient and safe connected and automated heavy-duty vehicles in real logistics operations (Automated Road Transport)