



H2020 **Marie Skłodowska-** **Curie Actions** **Innovative** **Training** **Networks**

Paris
12 October 2016

Excellence

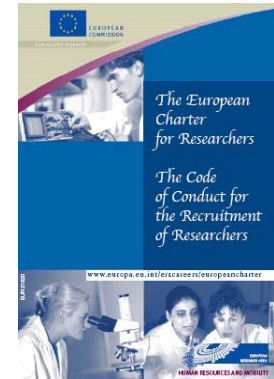
Research

Training

Career Development

Skills

Mobility





MSCA main objective for H2020:

Ensure the optimum development and dynamic use of Europe's intellectual capital in order to generate new skills and innovation

Total budget (2014-2020): **€ 6 billion** (current prices)



MSCA Objectives

- Attract and retain **research talent** in Europe
- Develop state-of-the-art, **innovative training schemes**, consistent with the requirements of R&I
- Promote sustainable **career development** in R&I
- Focus on **delivering new knowledge and skills**
- Back up **strong partnership with MS** via co-funding mechanism



- Open to **all domains of R&I** from **basic to market**
- Entirely bottom-up
- Participation of **non-academic sector** strongly encouraged
- **Mobility** key requirement - funding condition: participants move
- Promotion of **attractive working and employment conditions**
- Particular attention to **gender** balance
- **Public engagement** of supported researchers

Who, what and where?



Who? All levels of research experience

What? All areas of research - bottom-up approach

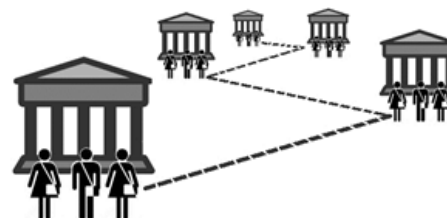
Where? Anywhere: any research performing organisation, public or private worldwide - there are actions for European and international mobility

EU contribution based on unit costs calculated on the basis of the number of researcher-months:

- *Allowances for researcher (living, mobility and family)*
- *Unit costs for research, training and networking*
- *Unit costs for management and overheads*



IF
Individual Fellowships



RISE
**Research and Innovation
Staff Exchange**



ITN
**Innovative Training
Networks**



COFUND



ITN

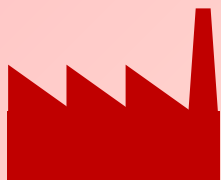
Innovative Training Networks

Two categories of organisations



Academic sector

- ✓ public /private higher education establishments awarding academic degrees
- ✓ public /private non-profit research organisations whose primary mission is to pursue research
- ✓ international European interest organisations (e.g. CERN, EMBL)



Non-academic sector

- ✓ any entity not included in the academic sector:
- ✓ e.g. large companies, SMEs, NGOs, museums, hospitals
- ✓ international organisations (e.g. UN, WHO)



Standardised legal validation of entities is applied to determine the category of each beneficiary

Beneficiary vs. Partner Organisation

Signs grant agreement		
Recruits and hosts researchers		
Claims costs to the EU		
Trains/hosts seconded researchers		
<i>Participates in supervisory board</i>		

Early Stage Researchers (ESR), at the time of recruitment, be in the first four years (full-time equivalent research experience) of their research careers and have not been awarded a doctoral degree.

Experienced Researchers (ER), at the time of the call deadline (IF) be in possession of a doctoral degree or have at least four years of full-time equivalent research experience.

ITN common features

- ✓ **International, multidisciplinary networks** of organisations
- ✓ **Any scientific domain***
- ✓ Recruiting of only **Early-Stage Researchers** who must establish a **Career Development Plan** for their **Training** together with their **Supervisors**
- ✓ **Duration** up to **48 months**
- ✓ **EU Principles for Innovative Doctoral Training**
 - ✓ http://ec.europa.eu/euraxess/pdf/research_policies/Principles_for_Innovative_Doctoral_Training.pdf
- ✓ **Secondments**
- ✓ **Supervisory board**
- ✓ **Consortium Agreement**



- ✓ **Raise excellence and structure research and doctoral training**
- ✓ Trigger **cooperation and exchange of best practice** among participants
- ✓ **Triple 'i' dimension** of mobility and particular **focus on innovation skills and employability**



Researcher level

- improved employability, successful career

Organisation level

- enhanced cooperation and better ToK between sectors and disciplines
- improved quality of the training programmes
- increased internationalisation of participating organisations

System level

- increased societal and economic relevance of European higher education
- make Europe more attractive as a leading research destination
- Better quality research and innovation

ITN 2017

implementation modes



ETN

European
Training
Networks

*Participants implement a joint
research training programme*

370 M€

EID

European
Industrial
Doctorates

*Doctoral training with the
non-academic sector*

28 M€

EJD

European
Joint
Doctorates

*Universities cooperate to
deliver joint degrees*

32 M€

Call Opening:	15 Sept 2016
Call Closure:	10 Jan 2017
Evaluation week:	27 – 31 March 2017
Launch Grant preparation:	April/May 2017
Starting dates:	Sept 2017 – Jan 2018

ITN: Organisational set-up



ETN

**Min. 3 beneficiaries from any sector
from 3 different MS/AC**

EID

**Min. 2 beneficiaries from 2 different MS/AC:
1 from academic + 1 from non-academic
sector**

EJD

**Min. 3 beneficiaries
from academic sector awarding PhD
from 3 different MS/AC**

Above this minimum: participants from any sector / country

ITN: Researchers



1. Only Early-Stage Researchers (ESRs):
≤ 4 years of research experience
no PhD yet (*at the recruitment time*)

2. Mandatory trans-national mobility
at the time of recruitment.

3. Any nationality

Contract of employment: **3 to 36 months**
after the project starts

Researcher-months: requested in proposals



ITN: Unit costs



Marie Skłodowska- Curie Action	Researcher unit cost person/month			Institutional unit cost person/month	
	Living allowance*	Mobility allowance	Family allowance	Research, training and networking costs	Management and indirect costs
Innovative Training Networks	3,110	600	500	1,800	1,200

* Subject to
country coefficient

Table 2: Country correction coefficients (CCC) for ITN and IF living allowances

For countries where the correction coefficient is not indicated, the Commission will decide on a case-by-case basis

Country Code ³⁰	CCC
EU Member States	
AT	104.8%
BE	100.0%
BG	71.5%
CY	91.8%
CZ	83.8%
DE	98.8%
DK	135.3%
EE	78.3%
EL	92.7%
ES	97.6%
FI	116.6%
FR	111.0%
HR	97.5%
HU	76.2%
IE	113.5%
IT	106.7%

LT	73.1%
LU	100.0%
LV	75.9%
MT	89.6%
NL	104.3%
PL	76.4%
PT	89.1%
RO	68.3%
SE	111.7%
SI	86.1%
SK	82.6%
UK	120.3%
Horizon 2020 associated countries	
AL	76.1%
BA	73.6%
CH	113.1%
FO	134.1%
IL	108.7%
IS	116.6%
MD	61.1%
ME	66.9%
MK	68.4%
NO	131.9%
RS	67.1%

TR	86.6%
UA	92.3%
Third countries	
AM	89.9%
AO	114.6%
AR	58.5%
AU	105.0%
AZ	93.0%
BB	116.6%
BD	47.2%
BF	93.8%
BJ	92.6%
BM	151.5%
BO	51.3%
BR	92.0%
BW	55.3%
BY	65.0%
BZ	75.3%
CA	86.4%
CD	127.6%
CF	114.3%
CG	124.9%
CI	102.0%
CL	67.1%

³⁰ [ISO 3166 alpha-2](#), except for Greece and the United Kingdom (EL and UK used respectively instead of GR and GB).

ITN implementation modes

ETN

European
Training
Networks

*Participants implement
a joint research programme*

370 M€

Research fields chosen freely by applicants
(CHE, ECO, ENG, ENV, LIF, MAT, PHY, SOC)

ETN

Participants implement a joint research training programme

Mandatory

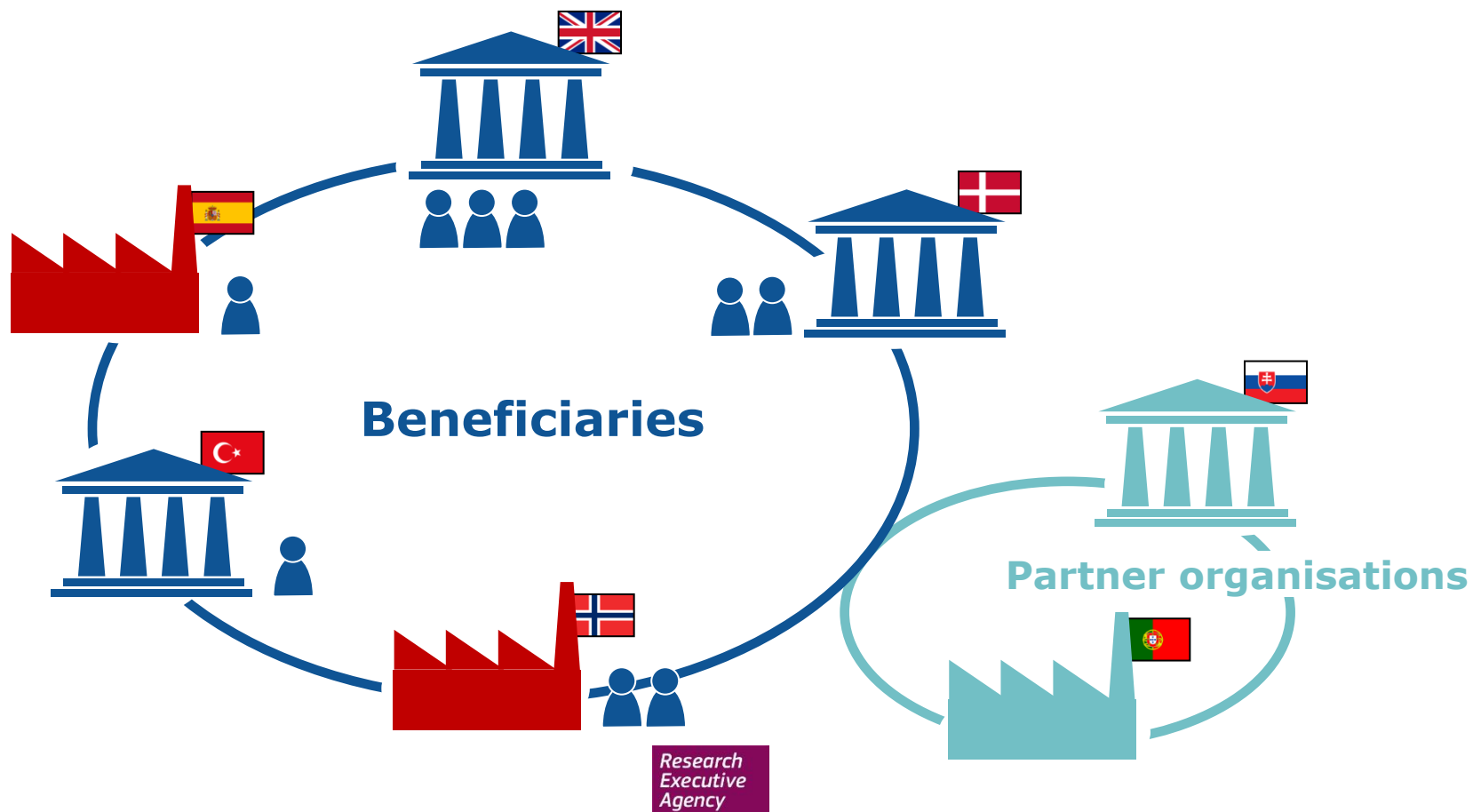
- ✓ Minimum 3 beneficiaries from 3 different MS/AC
- ✓ Each beneficiary recruits and hosts at least 1 ESR
- ✓ Max 540 person-months (e.g. 15 ESRs x 36 months)
- ✓ Max 40% budget to one country

Other features

- **Non-academic sector participation essential**
- PhD enrolment typically expected (not mandatory)
- **Secondments** to other countries/**sector**/disciplines ($\leq 30\%$ time)
- Joint supervision recommended
- Partner organisations (any country/sector)
- Typically 6-10 beneficiaries

ETN

Participants implement a joint research training programme



ETN

Success rate: ~ 6%

Consortia: ~ 8 Beneficiaries

Budget: ~ 3,500,000 €

ITN implementation modes

EID

**European
Industrial
Doctorates**

*Doctoral training with the
non-academic sector*

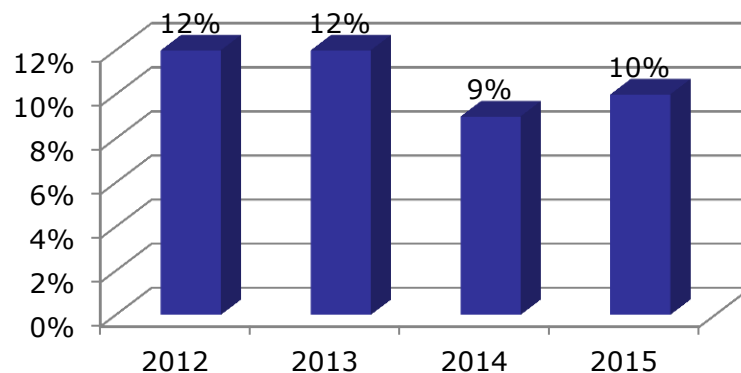
28 M€

Research fields chosen freely by applicants
(CHE, ECO, ENG, ENV, LIF, MAT, PHY, SOC)

History of EID



- Began 2012
- 2012 & 2013 restricted to max. 2 beneficiaries (1 academic + 1 private sector)
- 2014 & 2015 : 2 or ≥ 3 beneficiaries



**% of EID proposals
submitted to ITN calls**

EID

Doctoral training with the non-academic sector

Mandatory

- ✓ Minimum 2 beneficiaries from 2 different MS/AC

1 academic + 1 non-academic

If: 2 organisations = Max 180 person-months - e.g. 5 x 36 months

≥3 organisations=Max 540 person-months - e.g. 15 x 36 months

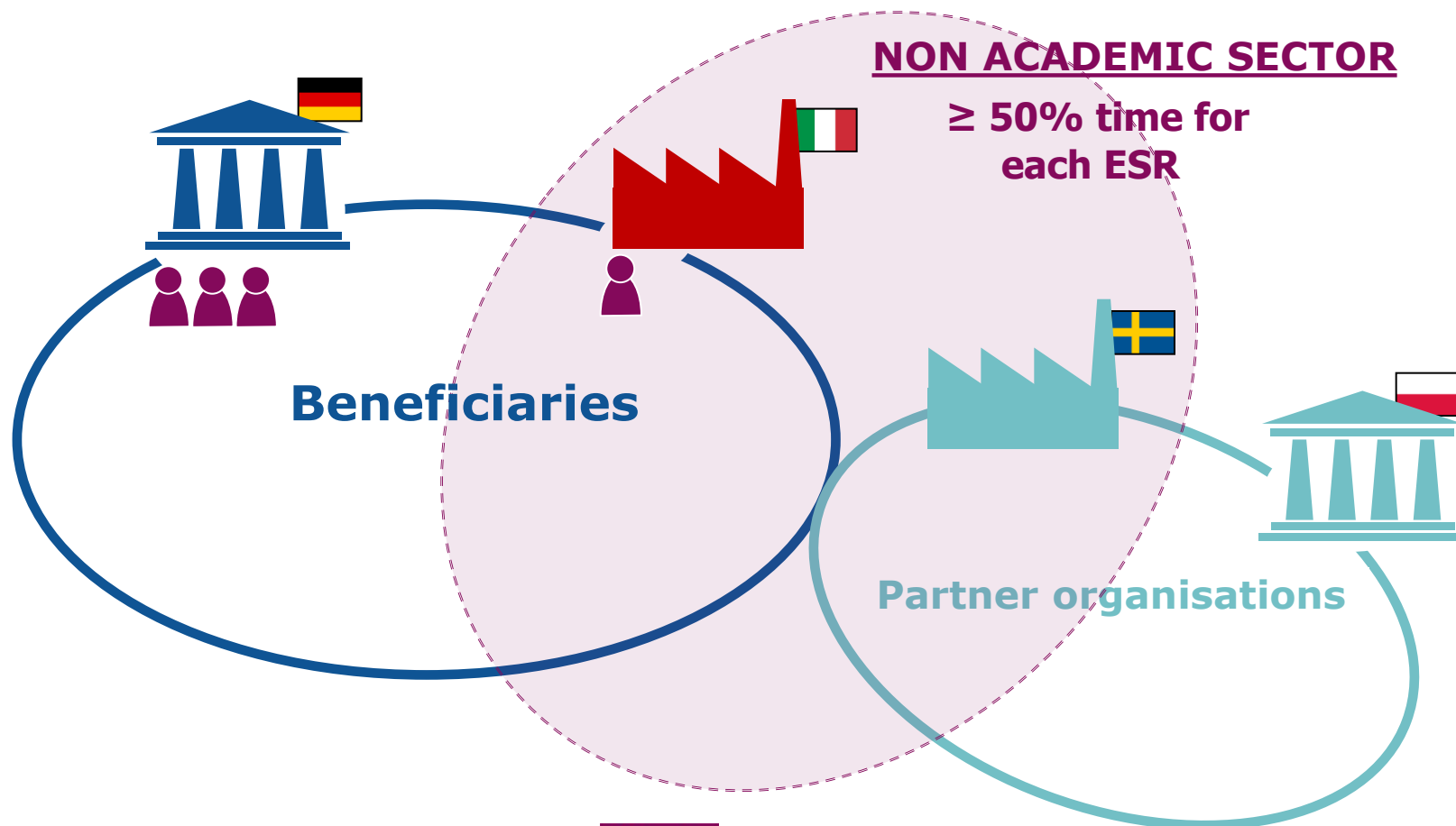
- ✓ Each ESR enrolled in a PhD (institution awarding doctoral degrees)
- ✓ Each ESR spends ≥ 50% time in non-academic sector
- ✓ Joint selection, training and supervision (1 supervisor/sector)
- ✓ International intersectorial secondment

Other features

- Individual research projects under the topic of the doctoral programme
- Secondments above 50% rule (up to 30% of time)
- Partner organisations (any country/sector)
- Flexible recruitment rule

EID

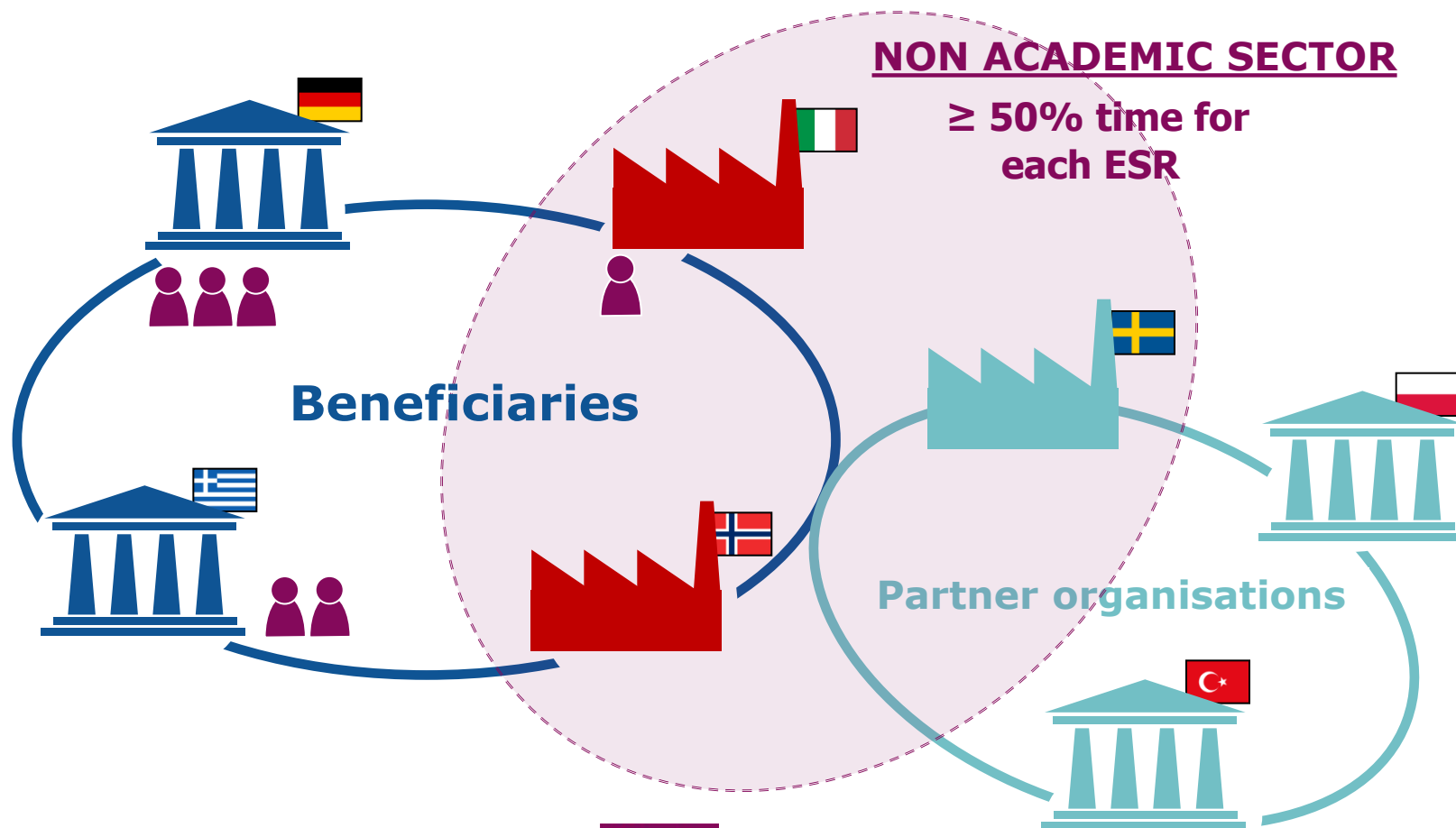
Doctoral training with the non-academic sector



2 beneficiaries: max 180 PM

EID

Doctoral training with the non-academic sector



≥ 3 beneficiaries: max 540 PM

EID

Success rate: ~ 10%

Consortia: 2 Beneficiaries (~ 65%)

Budget: ~ 1,400,000 €

ITN implementation modes

EJD

European
Joint
Doctorates

*Doctoral programme to
deliver joint degrees*

32 M€

Research fields chosen freely by applicants
(CHE, ECO, ENG, ENV, LIF, MAT, PHY, SOC)

EJD

Universities cooperating to deliver joint/multiple doctoral degrees

Mandatory

- ✓ Minimum 3 beneficiaries from academic sector awarding PhDs, from 3 different MS/AC
- ✓ Each ESR enrolled in the joint (international) doctoral programme
- ✓ **Joint** selection, training, supervision, governance
- ✓ Commitment to deliver **joint**/double/multi **degrees**
- ✓ Max 540 person-months (e.g. 15 ESRs x 36 months)
- ✓ **Letters of institutional commitment** from Beneficiaries to deliver degrees are required in the proposal

Other features

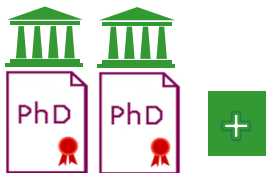
- Meaningful stays at joint doctorate beneficiaries
- Non-academic participation through secondments to other sector/disciplines ($\leq 30\%$)
- Flexible recruitment rule

EJD

Universities cooperating to deliver joint/multiple doctoral degrees



Joint degree: single diploma issued by at least 2 academic institutions, and recognised officially



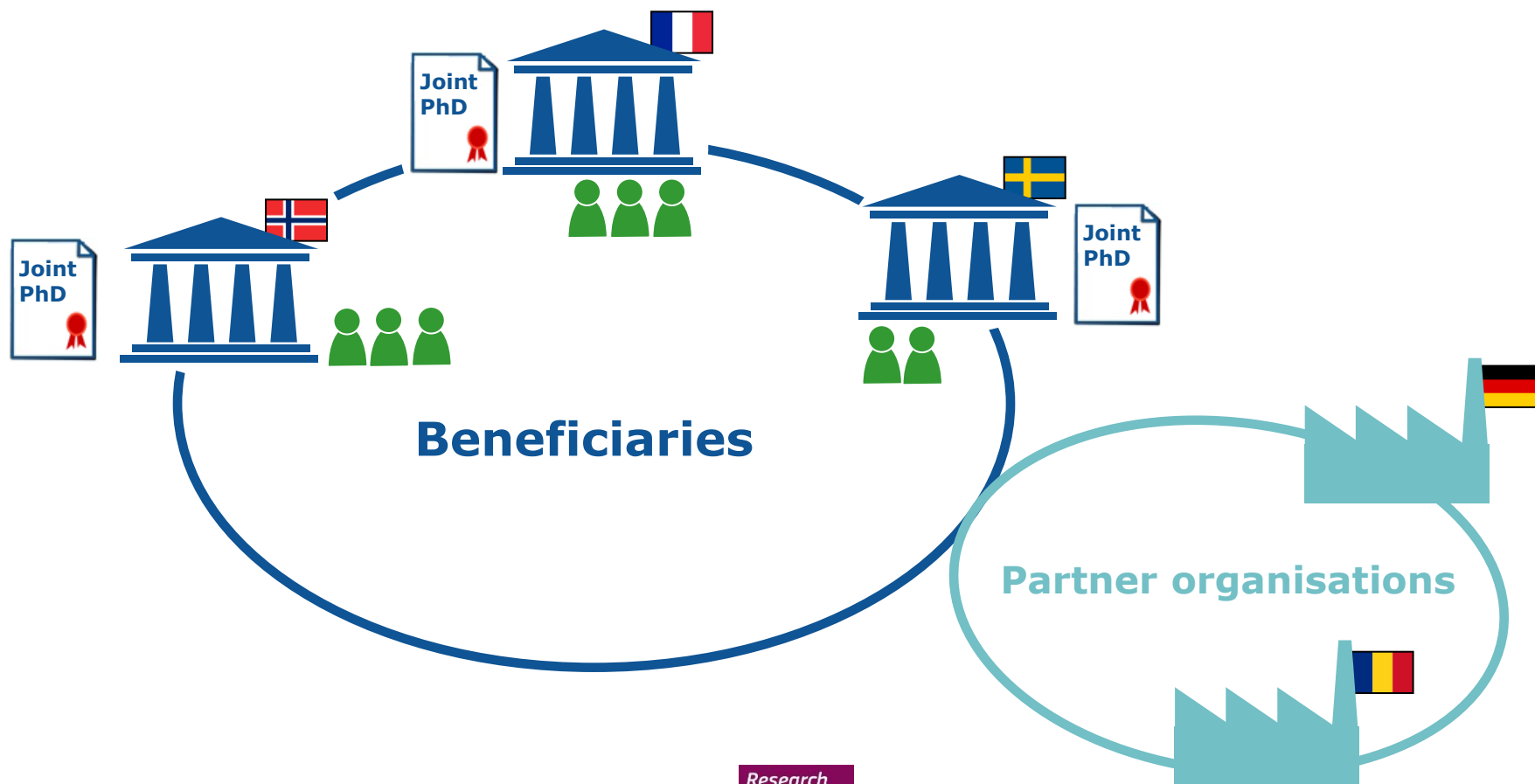
Double/multiple degree: 2 or more separate national diplomas issued by two or more higher education institutions and recognised officially



Letters of institutional commitment to deliver degrees are required in the proposal

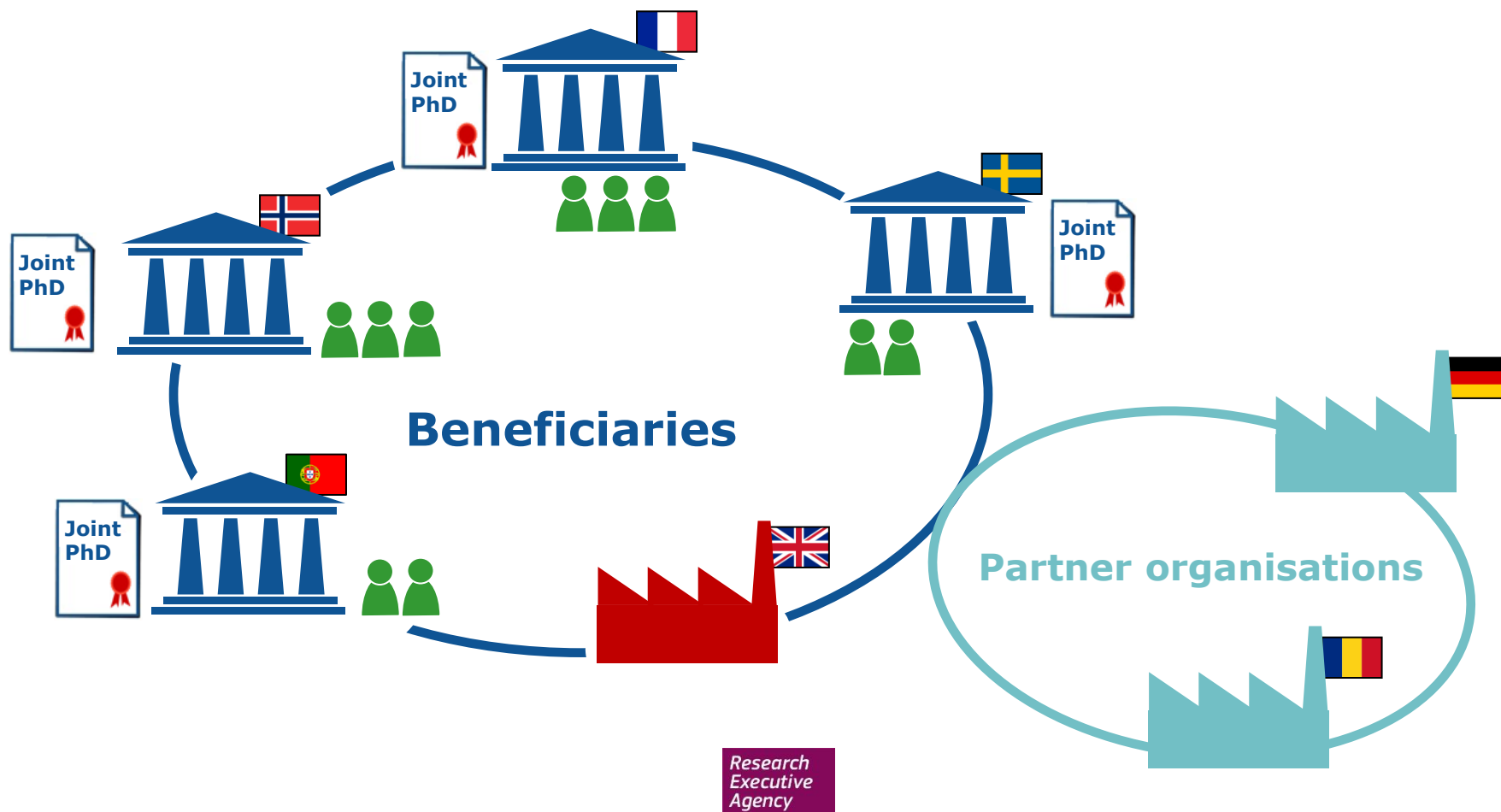
EJD

Universities cooperating to deliver joint/multiple doctoral degrees



EJD

Universities cooperating to deliver joint/multiple doctoral degrees



ITN: Marie Skłodowska-Curie Innovative Training Networks

Excellence	Impact	Quality and efficiency of the implementation
Quality, innovative aspects and credibility of the research programme (including inter/multidisciplinary, intersectoral and, where appropriate, gender aspects)	Enhancing the career perspectives and employability of researchers and contribution to their skills development	Coherence and effectiveness of the work plan, including appropriateness of the allocation of tasks and resources, (including awarding of the doctoral degrees for <i>EID</i> and <i>EJD</i> projects)
Quality and innovative aspects of the training programme (including transferable skills, inter/multidisciplinary, intersectoral and, where appropriate, gender aspects)	Contribution to structuring doctoral / early-stage research training at the European level and to strengthening European innovation capacity, including the potential for: a) meaningful contribution of the non-academic sector to the doctoral/research training, as appropriate to the implementation mode and research field b) developing sustainable joint doctoral degree structures (for <i>EJD</i> projects only)	Appropriateness of the management structures and procedures, including quality management and risk management (with a mandatory joint governing structure for <i>EID</i> and <i>EJD</i> projects)
Quality of the supervision (including mandatory joint supervision for <i>EID</i> and <i>EJD</i> projects)	Quality of the proposed measures to exploit and disseminate the project results	Appropriateness of the infrastructure of the participating organisations
Quality of the proposed interaction between the participating organisations	Quality of the proposed measures to communicate the project activities to different target audiences	Competences, experience and complementarity of the participating organisations and their commitment to the programme
50%	30%	20%
Weighting		

	ETN	EID	EJD
Beneficiaries	≥3 from 3 diff. MS/AC	≥2 from 2 diff. MS/AC: (≥1 academic + ≥1 non-academic)	≥3 (acad. award PhD) from 3 diff. MS/AC
Person-months	Max. 540	Max. 180 / 540	Max. 540
Researchers	ESRs only (3-36 months)		
Partner Organ.	Unlimited (any country / sector / discipline)		
PhD enrolment	typically expected	mandatory	mandatory
Non-academic participation	essential	mandatory	essential
Inter-sectoral exposure	possible through secondments	≥50% in non-academic	possible through secondments
Panels and rank lists	8 panels: CHE, ECO, ENG, ENV, LIF, MAT, PHY, SOC (370M€)	EID panel (28M€)	EJD panel (32M€)

ITN 2017: Call closes

Tue 10 Jan 2017



ETN

European
Training
Networks

*Participants implement a joint
research training programme*

370 M€

EID

European
Industrial
Doctorates

*Doctoral training with the
non-academic sector*

28 M€

EJD

European
Joint
Doctorates

*Universities cooperate to
deliver joint degrees*

32 M€

Call Opening:	15 Sept 2016
Call Closure:	10 Jan 2017
Evaluation week:	27 – 31 March 2017
Launch Grant preparation:	April/May 2017
Starting dates:	Sept 2017 – Jan 2018

H2020 Participant Portal



<http://ec.europa.eu/research/participants/portal/desktop/en/home.html>



RESEARCH & INNOVATION
Participant Portal

European Commission > Research & Innovation > Participant Portal > Home

HOME FUNDING OPPORTUNITIES HOW TO PARTICIPATE EXPERTS SUPPORT Search PP LOGIN REGISTER

(A-Z) Sitemap About this site Contact Legal Notice Search English



Horizon 2020 Funding
Starting from 1/1/2014

On this site you can find and secure **funding** for projects under the following EU programmes:

- **2014-2020** Horizon 2020 - research and innovation framework programme
- **2007-2013** 7th research framework programme (FP7) and Competitiveness & Innovation Programme (CIP)
- 3rd Health Programme, Asylum, Migration and Integration Fund, Consumer Programme, COSME, Internal Security Fund Borders, Internal Security Fund Police, Justice Programme, Promotion of Agricultural Products Programme, Rights, Equality and Citizenship Programme and Research Fund for Coal & Steel

Non-registered users

- search for funding
- read the H2020 Online Manual & download the legal documents
- check if an organisation is already registered
- contact our support services or check our FAQs

Registered users

- submit your proposal
- sign the grant
- manage your project throughout its lifecycle
- register as expert advising the Commission



WHAT'S NEW?



FUNDING OPPORTUNITIES



HOW TO PARTICIPATE



WORK AS AN EXPERT



MY PERSONAL AREA



INFORMATION AND SUPPORT

HORIZON 2020 RESEARCH ON EUROPA CORDIS OLAF

© European Commission

Research
Executive
Agency